



RESTRAINTS

OUR QUEST

INNOVATIVE DESIGN

FLAWLESS FUNCTION

UNPARALLELED SERVICE

In the demanding world of law enforcement there is little room for error. Performance is paramount. Failure is not an option. Among the men and women of this specialized profession, the name ASP is synonymous with quality. These are individuals who place their personal safety at risk each and every day in the protection of others. That these dedicated men and women prefer ASP products above all others is something of which we are extremely proud.

For over four decades, the distinctive ASP insignia has stood for innovative design, flawless function and an unparalleled standard of service.

Today ASP manufactures five distinct categories of products. Each is unique . . . the result of cutting edge design, advanced manufacturing technologies and exhaustive field evaluations. This is a product line so advanced that it is protected by over 150 patents.

From the beginning, the ASP Eagle has reflected an uncompromising standard of craftsmanship. Throughout the world, ASP remains the first choice of quiet professionals. In this catalog, you will find products of distinction built to a singular standard of quality. For those who cannot afford less. ASP . . . protecting those who protect.



Kevin Parsons, PhD
Chairman & CEO

ISO 9001:2015



FORGED

UNPARALLELED CONTROL POTENTIAL

It has been called the greatest handcuff advance of this century. The ASP Restraint System. A fusion of innovative design, advanced materials and cutting edge technology. The result of an exhausting eight year design effort. A system with real world features. A restraint series that has set a new standard for safety and security.



SELECTING YOUR RESTRAINT

FRAME

Ultra Cuffs have a hammer forged 7075 T6 frame that is both rigid and incredibly strong, yet is lightweight. The cuffs have radiused edges that reduce soft tissue injuries. They are hardcoat anodized.

MODEL

Chain, Hinge and Rigid restraints are available in both steel and aluminum configurations. Chain, Hinge and Rigid Identifier restraints are stocked in four standard colors. All ASP Handcuffs are produced with one, two, three or slip pawl Lock Sets.



CHAIN



HINGE



RIGID

BOW

Whether in high carbon steel or forged aircraft aluminum, the high contact bow has fully radiused edges, deep set teeth and the largest span of locking positions in the industry.

The laser engraved serial number of ASP Handcuffs identifies the date of manufacture. Agency or individual identification can be engraved on the bow or frame.



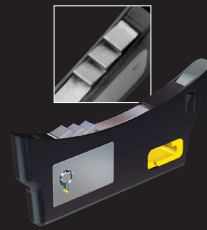
STEEL



ALUMINUM

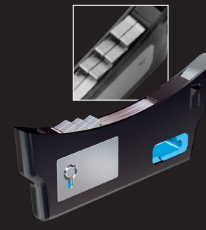
LOCK SET

Tactical (one pawl), Security (two pawl), European (three pawl) and Training (slip pawl) Lock Sets are color coded and interchangeable. Lock assemblies are extremely smooth with dual-sided stainless steel keyways and high visibility double lock indicators. Both double and single locks release by turning the key in one direction.



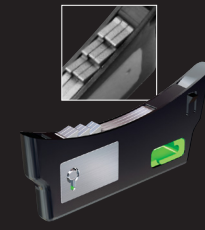
TACTICAL (1 Pawl)

The high visibility single pawl Lock Set is both strong and shim resistant.



SECURITY (2 Pawl)*

The two pawl divider plate design is virtually impossible to pick.



EUROPEAN (3 Pawl)

Three independent pawls provide an extra measure of security against shimming.

* Provided with proprietary handcuff key.

COLOR

Bright, vivid color bands can readily distinguish the restraints of specific agencies or divisions. They may be used to identify the security threat or medical condition of a subject.



BLUE

GRAY

PINK

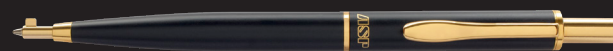
YELLOW

KEYS

Heat treated and backset ASP keys are tough, strong and available in a variety of configurations.



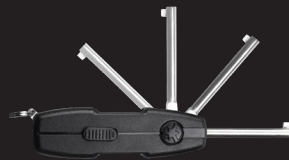
PRESTIGE LOGOS



LOCKWRITE CLICK | 56254



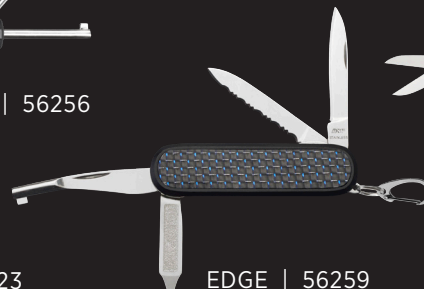
LOCKWRITE TWIST | 56240



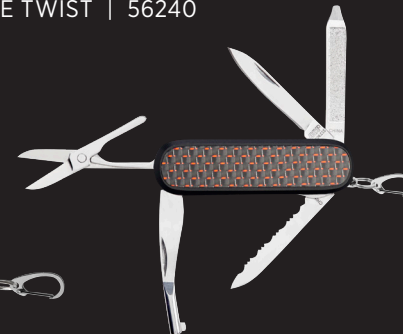
AUTOKEY | 56256



PENTAGON (12) | 56523



EDGE | 56259



INVESTIGATOR | 56209



Gold



Black



Silver



CLIP | 56250



S1 | 56252



S2 | 56253

G1 | 563__

G2 | 568__

RESTRAINTS

CHAIN

LINEAR AND LATERAL MOBILITY

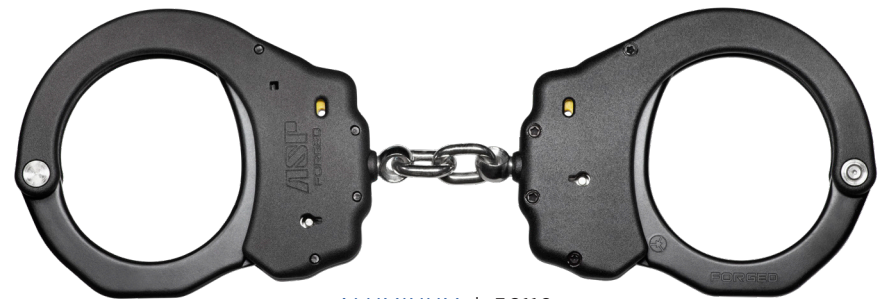
ASP Chain Ultra Cuffs provide a major advance in both the design and construction of wrist restraints. Frame geometry is the result of extensive computer modeling and simulation analysis. Strength potential has been maximized through the use of a 7075 T6 forged aluminum frame. The Lock Set is unitized and replaceable.

- A Flat Contact Surface
- B Keyway on Each Side
- C High Visibility Double Lock Indicator
- D Hand Welded Stainless Chain



STEEL CHAIN | 56109

	PAWL	COLOR	STEEL BOW	ALUMINUM BOW
TACTICAL	1	Yellow	56109	56110
SECURITY	2	Blue	46109	46110
EUROPEAN	3	Green	66109	66110



ALUMINUM | 56110

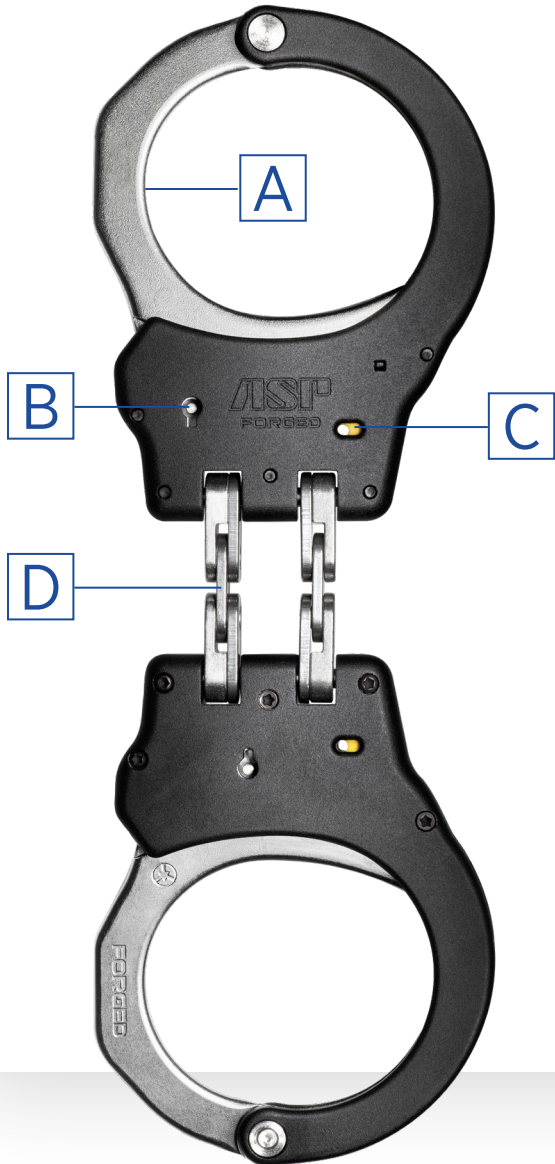
Aluminum handcuffs weigh 15% less than steel models and are distinguished by black bows.

RESTRAINTS HINGE

LINEAR MOBILITY, LATERAL RIGIDITY

Hinge Ultra Cuffs provide increased control of violent subjects. Because of their conical bow geometry, the cuffs fit large subjects yet still control small wrists. They are easily carried, rapidly applied and have a clean, smooth, finished appearance. The four point connection system allows the cuffs to fold flat and yet be worn over belts of various thicknesses. Because connecting rivets are integral with the side plate, they cannot be driven out.

- A Radiused Edges
- B Recessed Keyway
- C High Visibility Double Lock Indicator
- D Four Point Hinge



STEEL HINGE | 56119



ALUMINUM | 56120

	PAWL	COLOR	STEEL BOW	ALUMINUM BOW
TACTICAL	1	Yellow	56119	56120
SECURITY	2	Blue	46119	46120
EUROPEAN	3	Green	66119	66120

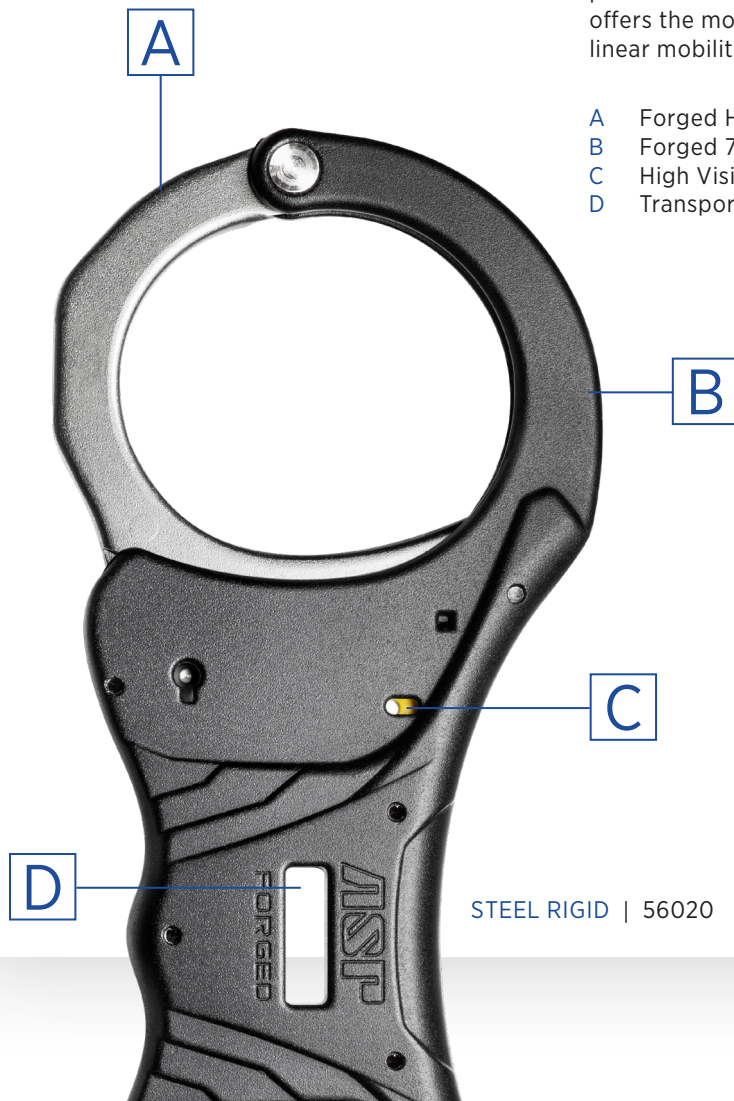
RESTRAINTS

RIGID

LINEAR AND LATERAL RIGIDITY

ASP Rigid Handcuffs may be used to control the most resistant subject. Their extended lock design provides a secure structure that allows an officer to stabilize without impact. The Rigid configuration offers the most restrictive handcuff structure in the ASP Restraint Series. It removes both lateral and linear mobility. For this reason, Rigid cuffs are ideal for courtroom or airline restraint.

- A Forged High Carbon Steel
- B Forged 7075 Aluminum
- C High Visibility Double Lock Indicator
- D Transport Channel



STEEL RIGID | 56020

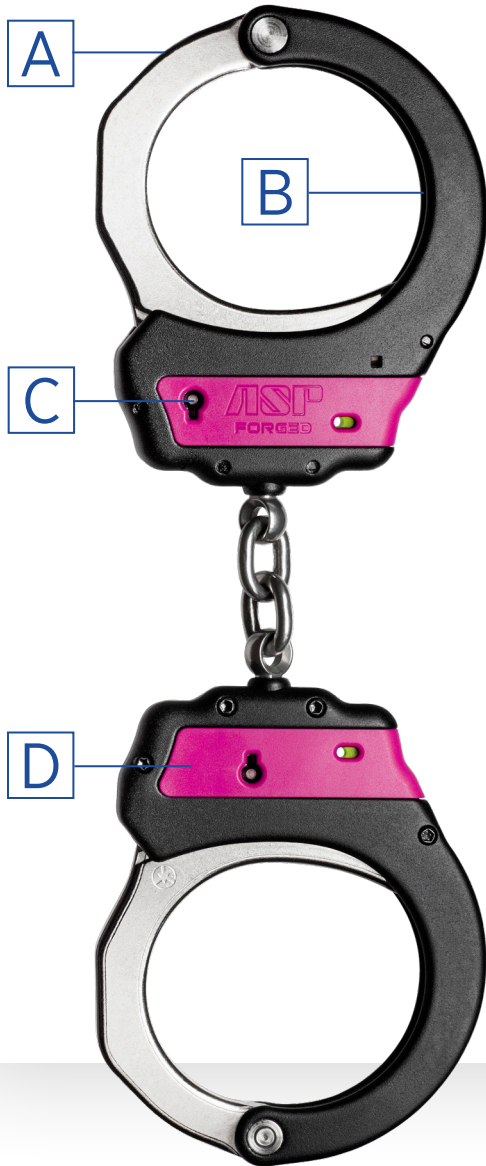
	PAWL	COLOR	STEEL BOW	ALUMINUM BOW
TACTICAL	1	Yellow	56020	56030
SECURITY	2	Blue	46020	46030
EUROPEAN	3	Green	66020	66030



ALUMINUM | 56030

Aluminum handcuffs weigh 15% less than steel models and are distinguished by black bows.

RESTRAINTS IDENTIFIER



RAPID RECOGNITION

The patented designs of ASP Chain, Hinge and Rigid Handcuffs provide the safest restraints in the industry. The flat contact surface and smooth action prevents injury during application. All edges of the frame, cheek plate and bow are rounded to minimize the potential for nerve damage.

The conical geometry of ASP Handcuffs securely holds both small and large wrists. Forged Frame Technology results in smooth, rounded edges that reduce injury potential. The double lock indicator is highly visible. It is easily checked to assure activation. Cuffs that test too tight may be loosened and double locked without removing the key from the cuff.

The interchangeable Lock Set of ASP cuffs may be upgraded to a two pawl High Security or three pawl European. The two-sided lock release is recessed and easily accessed without trauma to the subject. Both the single and double lock are released by turning the key in one direction.

- A Forged Steel Bow
- B Hardcoat Anodized Frame
- C Stainless Steel Keyway
- D Identification Band

	STEEL CHAIN	STEEL HINGE	STEEL RIGID
BLUE	56001	56011	56021
GRAY	56002	56012	56022
PINK	56003	56013	56023
YELLOW	56004	56014	56024

IDENTIFIER CHAIN | 56003



HINGE | 56014



RIGID | 56021

RESTRAINTS

ANKLE CUFFS

AUGMENTED SECURITY

ASP Ankle restraints incorporate the innovative design and construction features that revolutionized the restraint industry. A forged aluminum body, flat contact bows, replaceable Lock Sets, double sided keyway and spiral pin construction set ASP Ankle Cuffs apart from all other available leg restraints.

- A Hand Welded Stainless Steel Chain
- B 7075 Forged Aluminum Frame
- C Forged Steel Bow
- D Double Sided Keyway and Locking Slot



ANKLE CUFFS	PAWL	COLOR	STEEL BOW
TACTICAL	1	Yellow	56040
SECURITY	2	Blue	46040

RESTRAINTS TRANSPORT KIT

PORTABLE SECURITY

Transport Kits are lightweight and compact. They provide enhanced security during the movement of subjects by law enforcement, court or corrections personnel and airlines.

- A Rapid Access Carrier
- B Transport Lock
- C Locking Tongue
- D Waist Restraint



TRANSPORT KIT	CHAIN	BELT
TACTICAL (1 PAWL)	56176	56178
SECURITY (2 PAWL)	46176	46178

TRANSPORT PLUS

The Transport Plus combines Rigid and Ankle Cuffs to create an enhanced retention system. A chain or belt interface is available for one pawl (standard) or two pawl (high security) restraints.



TRANSPORT PLUS	CHAIN	BELT
TACTICAL (1 PAWL)	56179	56186
SECURITY (2 PAWL)	46179	46186

ANKLE CHAIN

120" (2 LOCKS, 4 KEYS)	56182
------------------------	-------

ANKLE BELT

120" (2 LOCKS, 4 KEYS)	56129
------------------------	-------

RESTRAINTS CASES

CLASSIC CARRIERS WITH A HIDDEN ADVANTAGE

ASP Handcuff Cases are a benchmark blend of the finest materials in a series of clean, functional designs. Each case incorporates an integral back pocket and auxiliary handcuff key. Duty, Double, Centurion and Federal carriers are available in Black, Basketweave, Ballistic and ASPtec.

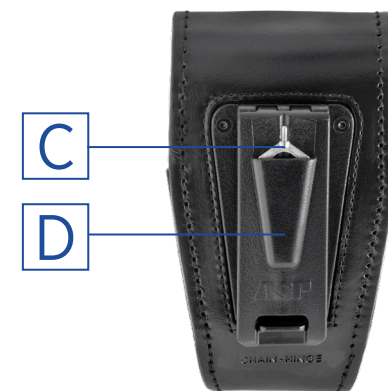
Federal cases are produced using inset construction. Centurion cases are corner stitched. Tactical carriers are constructed from ballistic nylon and incorporate a hook and loop flap.

Exo cases are compact, secure and rapidly released. Investigator Cases are concealable and attach rapidly to the belt. Combo carriers retain a Tactical Baton with restraints.

- A Secure Cuff Retention
- B Durable Case Finish
- C Spare Pentagon Key
- D Concealed Key Pocket



DOUBLE | 56160



Handcuff cases attach with a Snap-Loc belt clip.

DUTY

This rugged handcuff case incorporates a key pocket and is constructed with elastic side walls.



DUTY | 56131



DOUBLE

A line of uniform cuff cases that secure restraints with a protective hook and loop cover and elastic side wall technology.



DOUBLE | 56160



CENTURION

These handcuff cases incorporate a key pocket and are constructed with an inset back, protective cover and snap closure.



CENTURION | 56146



FEDERAL

A series of cuff carriers with an inset back and pull through retention strap.



FEDERAL | 56138



TACTICAL

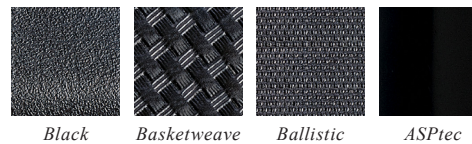
These high security handcuff cases retain ASP cuffs with an adjustable hook and loop flap.



TACTICAL | 56136



CHAIN/HINGE	DUTY	DOUBLE	CENTURION	FEDERAL
BLACK	56131	56160	56146	56138
BASKETWEAVE	56132	56161	56147	56139
BALLISTIC	56133	56162	56148	56140
ASPTEC	56137	56163	56149	56141



INVESTIGATOR

These plainclothes cuff cases are compact and concealable. They are designed for non-duty belts.



INVESTIGATOR

BLACK | 56134
BALLISTIC | 56135

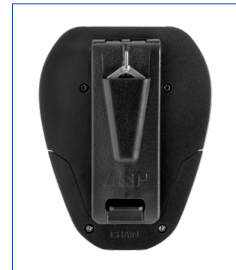


EXO

An open architecture security case that is equally suited to plainclothes or duty use. Restraints are locked in the carrier with a rapid release.



EXO | 56130



COMBO

ASP Combination Cases hold an Infinity Baton and restraints. They are compact clip-on carriers that are convenient, low profile and secure.

Baton & Cuff Cases hold an Agent or Talon Baton with a Chain or Hinge Cuff.



AGENT & CUFF CASE | 35653
TALON & CUFF CASE | 35654



RIGID | 56172

RESTRAINTS KEYS



GUARDIAN G1 | 56361

AS TOUGH AS THE JOB

ASP Handcuff Keys are designed to withstand the rigors of long term duty use. Conventional keys are stamped from mild steel. They often break or twist off in a handcuff. These “key jammed” restraints create civil liability.

Each ASP key is hammer forged, then precision machined. Keys are heat treated for strength and coated with a protective finish. The unique ASP BackSet feature allows rapid location of the handcuff keyway.

- A Protective Keyring Swivel
- B Recessed Logo
- C Heat Treated Stainless Steel
- D BackSet Lock Release

CUSTOM LOGOS

The ASP Custom Logo program allows die struck medallions to be fabricated for a specific agency or unit. Insignias can be inset into Guardian 1 or Guardian 2 Handcuff Keys.



GUARDIAN G2 | 56689

	BLACK	STAINLESS	GOLD	COPPER	BRASS
G1	563__	565__	567__	569__	575__
G2	564__	566__	568__	570__	576__

PRESTIGE LOGOS

Combine the first three numbers of the selected Guardian Key with the two numbers of the desired Prestige Logo.





PENTAGON (12) | 56523



LOCKWRITE CLICK | 56254



LOCKWRITE TWIST | 56241

LOCKWRITE	GOLD	SILVER	BLACK	BLUE (2 PAWL)
CLICK	56254	56255	56247	56248
TWIST	56240	56241	56242	-

PEN CARTRIDGES	BLACK	BLUE	RED
	56244	56245	56246



Blue (2 Pawl)



POCKET TOOLS	EDGE	INVESTIGATOR
BLACK ALUMINUM	56258	56207
BLUE CARBON FIBER	56259	56208
RED CARBON FIBER	56268	56209



AUTOKEY | 56256



S1 SWIVEL | 56252



S2 SWIVEL | 56253



CLIP | 56250
CLIP (2 PAWL) | 46250

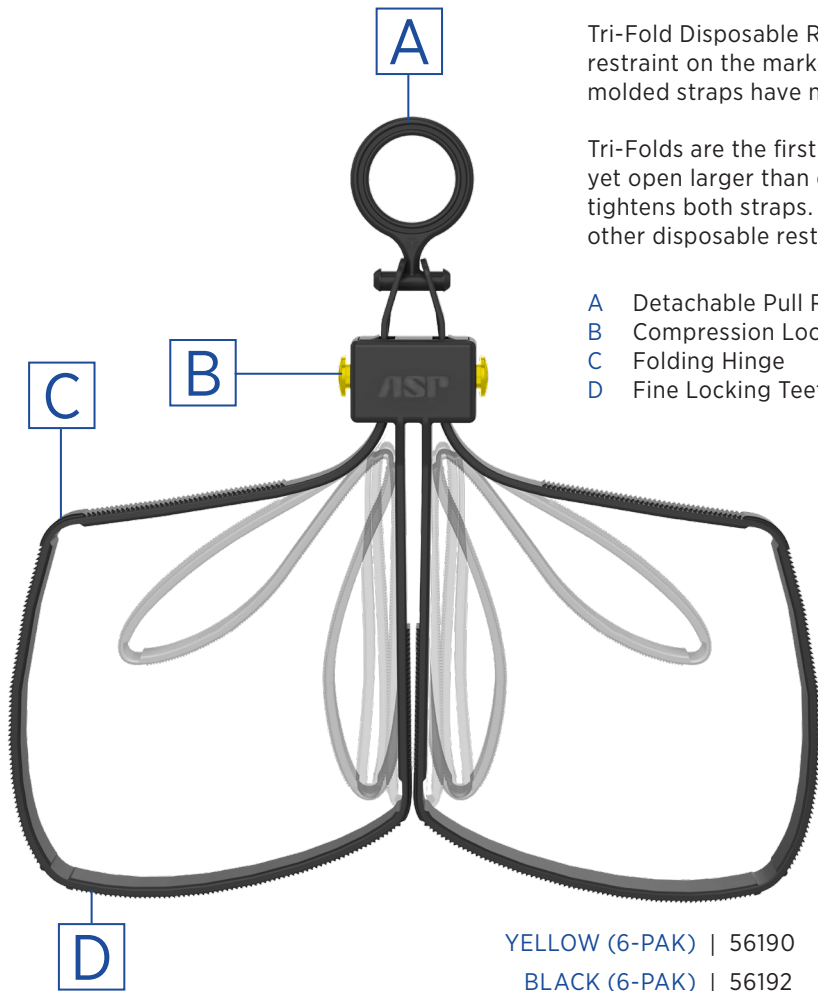
RESTRAINTS

TRI-FOLD

SINGLE USE SECURITY

Tri-Fold Disposable Restraints are the most compact, easily carried and rapidly applied single use restraint on the market. Specifically designed to law enforcement standards, their wide precision molded straps have no sharp edges.

Tri-Folds are the first choice of US military and police Rapid Response Teams. They are compact, yet open larger than other disposable restraints on the market. Their smooth pull simultaneously tightens both straps. The Tri-Fold is stronger, more pick resistant and easier to remove than any other disposable restraint. The design is not sensitive to heat, cold or humidity.



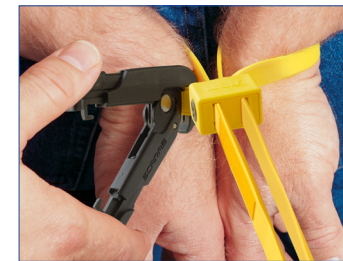
- A Detachable Pull Ring
- B Compression Lock
- C Folding Hinge
- D Fine Locking Teeth

YELLOW (6-PAK) | 56190

BLACK (6-PAK) | 56192



SCARAB CUTTER | 56225



Scarab Cutters attach to a keyring. They remove restraints with compound leverage.

COMBO

The BRL carrier positions an Agent Baton, Tri-Fold Restraint and Tungsten light on a plainclothes belt.



BRL CASE | 35655



CARABINERS	BLACK	GRAY	COYOTE	YELLOW
LARGE	56216	56222	56217	56218
MINI	56260	56262	56261	56263



TRI-FOLD CASE | 56201



PULL (6) | 56213



TRI-FOLD & SCARAB CASE | 56226
(INCLUDES SCARAB)

Carabiners secure Tri-Folds and Scarabs to a tactical vest, belt or pants.





Protecting Those Who Protect