

INFINITY ∞ BATON



# OUR QUEST

INNOVATIVE DESIGN

FLAWLESS FUNCTION

UNPARALLELED SERVICE

In the demanding world of law enforcement there is little room for error. Performance is paramount. Failure is not an option. Among the men and women of this specialized profession, the name ASP is synonymous with quality. These are individuals who place their personal safety at risk each and every day in the protection of others. That these dedicated men and women prefer ASP products above all others is something of which we are extremely proud.

For over four decades, the distinctive ASP insignia has stood for innovative design, flawless function and an unparalleled standard of service.

Today ASP manufactures five distinct categories of products. Each is unique . . . the result of cutting edge design, advanced manufacturing technologies and exhaustive field evaluations. This is a product line so advanced that it is protected by over 150 patents.

From the beginning, the ASP Eagle has reflected an uncompromising standard of craftsmanship. Throughout the world, ASP remains the first choice of quiet professionals. In this catalog, you will find products of distinction built to a singular standard of quality. For those who cannot afford less. ASP . . . protecting those who protect.



Kevin Parsons, PhD  
Chairman & CEO

ISO 9001:2015





## INFINITY GUARANTEE

Armament Systems and Procedures set the standard for expandable police batons. For over four decades, ASP has manufactured the most rugged, reliable, technically advanced impact weapons in existence. The design, engineering and precision manufacturing of ASP products set a worldwide standard for the law enforcement community.

We understand the importance of quality to the officers who stake their lives on the products they carry. We should know. We literally wrote the book on the concept. The Infinity Baton is the latest evolution in the long history of ASP innovation. To prove it, we guarantee this baton. Forever. Period.

We will repair or replace your ASP Infinity Baton at no charge to you in the event that it is ever damaged or fails to function. If we cannot repair your baton, we will replace it with a new model that is in perfect working condition. It doesn't matter what happened, how it happened, whose fault it was or where you purchased the baton.

### ASP INFINITY GUARANTEE

- Unlimited lifetime guarantee
- No warranty card required
- No receipt required
- No return authorization required
- No time limit
- No charge

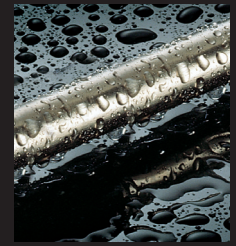
*The Infinity symbol is laser engraved on ASP Batons that are guaranteed forever.*



## SELECTING YOUR BATON

42 models of Infinity Batons assure the perfect match between product and mission. From Length to Finish, you will find a design that fits your specific requirement. Each model is available with Grips, Shafts and Attachments that will make your job safer.

ASP product codes are systematic and easily distinguished. The first letter (T) is the Locking System. The next two digits (40, 50, 60) are the Length. The next letter (A, B, E) is the Shaft. The final letter (F, V) is the Grip.



LOCKING  
SYSTEM

T

SHAFT

50

B

F

LENGTH

GRIP

Airweight offers a 45% weight reduction with 98% of the striking potential of steel.

Black Chrome provides the most durable black baton finish available.

Electroless is the most corrosion resistant finish. It is well suited to high humidity environments.

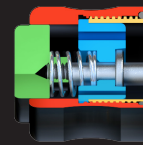
### LOCKING SYSTEM

Step up to the simplicity, reliability and strength of the new Infinity Disc Loc design. There is a model available for each requirement.

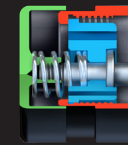


### RELEASE

Whether by the convenience of a button or the ease of a cap, the Talon Baton may be manually released without impact.



BUTTON



CAP

### LENGTH

T40, T50 and T60 Infinity Batons allow you to select the compromise between ease of carry and impact potential that best fits your needs.



60

## SHAFT

The portability of Airweight, low profile of Black Chrome and corrosion resistance of Electroless make it possible to match your baton to the operational environment.



AIRWEIGHT



BLACK CHROME



ELECTROLESS

## GRIP

The cushioned hold of Foamed Vinyl or the control of Vector provide two distinct, yet effective grips.



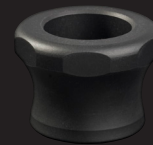
FOAM



VECTOR

## CAPS

Whether improving retention, increasing striking potential or adding a mark of distinction to your baton, caps are an integral part of the ASP system. They are compatible with Talon Batons in use throughout the world.



GRIP CAP T\* | 52935



BAND CAP	BLUE	GOLD	PINK	SILVER
T SERIES*	52901	52902	52903	52904

## ATTACHMENTS

Auxiliary features may be seamlessly added to your Talon Baton. Whether increasing retention, facilitating carry, adding illumination, improving visibility or aiding entry, these attachments are easily installed to enhance your tactical advantage.



NEXUS T CAP\* | 52932



TACTICAL T\* | 35637



FUSION T\* | 35638



BREAKAWAY TIP

A SERIES	52944
T SERIES	52940



MIRROR & CASE | 52470

\* Compatible with button release batons only

# BATONS TALON



T50 TALON | 22411

## MANUAL RELEASE

The elegance of any design is measured by the quality and simplicity of its parts. In this baton you will find the premium materials, exceptional workmanship and flawless function of ASP. These are all combined in a push button design with minimal parts. While others are content to introduce new variations, the Talon produces a new standard. This is a baton with quality, durability and performance in every detail. It is the next generation of intermediate force.

This revolutionary new Infinity design uses a single locking disc that cams into an internal groove which is machined into each tube. Lockout is simple, stable and secure. Positive expansion complements push button release.

Elegantly simple. Incredibly strong. Easily carried. Rapidly deployed. Extended tip expansion. Push button retraction. A new standard of convenience. The Talon Baton from ASP.

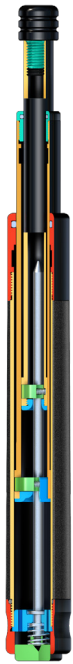
- A Heat Treated Shafts
- B Impact Forged Tip
- C Foamed Vinyl Grip
- D Push Button Release



PUSH



CLOSE



## TALON SERIES

ASP Talon Batons are the most technically advanced manual release impact weapons currently available to the law enforcement community. Internal discs provide solid, robust lockout. Extension is rapid and positive. A simple press allows a smooth, one hand release. The baton can be positioned, retracted and secured in a scabbard in one fluid motion.

Easily carried and readily available, ASP Batons have an incredible psychological deterrence and unparalleled control potential. The premium materials, exceptional workmanship and flawless function of the ASP Baton set it apart from all others in quality, durability and performance. In every detail, this is the finest impact weapon produced.



BUTTON RELEASE



CAP RELEASE



### TALON

	BUTTON			CAP		
	40	50	60	40	50	60
AIRWEIGHT*	22212	22412	22612	22214	22414	22614
BLACK CHROME	22211	22411	22611	22213	22413	22613
ELECTROLESS	22230	22430	22630	22231	22431	22631
AIRWEIGHT*	22232	22432	22632	22233	22433	22633
BLACK CHROME	22234	22434	22634	22235	22435	22635
ELECTROLESS	22236	22436	22636	22237	22437	22637

\* Airweight Batons weigh 45% less than steel models.



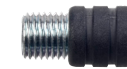
T40 TALON | 22211



T50 TALON | 22434



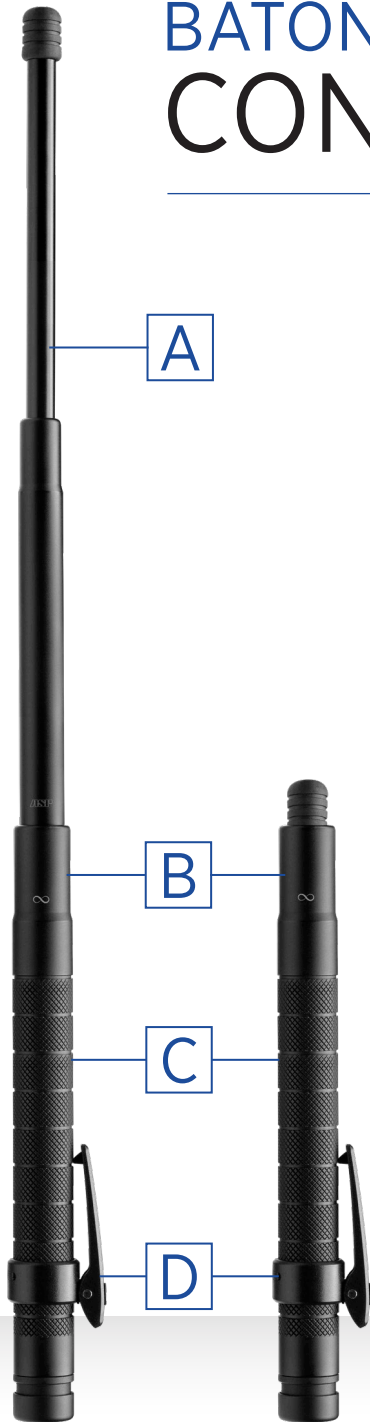
T60 TALON | 22611



HRT | 52941

The optional Human Rights Tip (HRT) is overmolded with soft polymer.

# BATONS CONCEALABLES



## CONVENIENTLY CLIPPED

The Agent Infinity Baton provides officers with an enhanced Every Day Carry (EDC) baton. The new design has fewer parts, a stronger structure and smoother function. The Infinity Agent is an easy carry baton with the world class striking potential of an ASP impact weapon. Each is fabricated using proprietary materials and manufacturing techniques. Batons are produced to the same standard of quality that has been adopted by police professionals in over 100 countries around the world.

Agent Infinity Batons expand to 30, 40 or 50 cm. They have the form, fit and striking potential of a duty baton. The reduced diameter and low profile grip of the Agent may be concealed inside the waistband or worn on a dress belt. The Nexus Clip may be adjusted to a variety of positions along the handle to enhance concealment or ease of presentation. Agent Batons can be carried tip up or tip down. As with all ASP Infinity Batons, the Agent is retracted with a simple push of the cap.

- A Heat Treated Shafts
- B 7075 T6 Aluminum
- C Crosstec Knurling
- D Adjustable Nexus Clip



AGENT  
MANUAL CLOSE

A50 AGENT | 52224





## AGENT SERIES

The manual close Agent Batons are a combination of discreet concealment and rapid presentation. They are an ideal impact weapon for administrators, investigators and undercover operatives. The batons incorporate a 4140 steel striking surface. The 7075 T6 aluminum middle shaft and handle are forged to shape and then precision machined. The grip is fine line, Crosstec knurled with spiral micro grooves. Grooves accept a Nexus baton clip. Agent Batons carry the Infinity Guarantee.

	A30	A40	A50
AIRWEIGHT*	52220	52223	52224
STEEL	52260	52261	52262

\* Airweight Batons weigh 45% less than steel models.



A30 AGENT | 52220



A40 AGENT | 52223



A50 AGENT | 52224

# BATONS ATTACHMENTS



GRIP CAP T\* | 52935

## GRIP CAPS

Grip Caps enhance baton retention while adding anti-roll stability when batons are not in use.

## BAND CAP

Unique accents to the Talon Baton. Band Caps are distinctive yet low profile.



BAND CAP   BLUE   GOLD   PINK   SILVER  
T SERIES\*   52901   52902   52903   52904

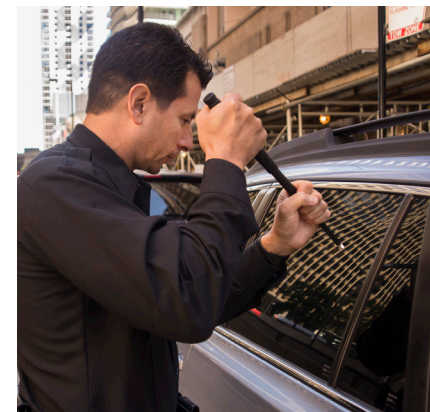
## ALWAYS READY

Tactical attachments are compatible with Talon Batons in service throughout the world. These are unique accessories that fill specific needs. Each is designed, tested and manufactured to be an integral part of the total ASP system.

A cap to enhance retention or impact potential. An accessory to add light. A tool to gain entry. An insignia to add distinction. Each ASP attachment is built with the same old world craftsmanship and attention to detail as your Infinity Baton.

## BREAKAWAY TIP

The BreakAway Tip provides a safe means of keeping a vehicle entry tool readily at hand. The diminutive design replaces the standard tip of an Agent or Talon Baton. Removing the tip cover exposes a ground ceramic pin that can break a side window or punch an entry circle in a windshield.



## BREAKAWAY TIP

A SERIES | 52944  
T SERIES | 52940

## NEXUS

The Nexus T Cap provides secure, lightweight clip-on retention of ASP Talon Batons. The design is compact and easily installed. Batons are conveniently carried and rapidly presented.



NEXUS T CAP\* | 52932



MIRROR | 52471

## TACTICAL MIRROR

An easily carried and rapidly attached accessory. Tactical Mirrors are ideal for drug search and room clearance operations. The mirror allows an officer to see around corners without presenting a target. In addition, it is an ideal means of looking into areas without risking exposure to hidden needles. The Tactical Mirror is available individually or with a fitted case.



MIRROR & CASE | 52470

## BATON LIGHTS

The Tactical T and Fusion T are easily attached to any Talon Baton. Each light produces 180 lumens of brilliant white illumination. Powered by a custom Lithium-ion power cell, they are micro USB rechargeable. Their TIR reflector is compact and optically precise. The intermittent or constant switch is positive and secure. The lights are tough, bright and always at hand.



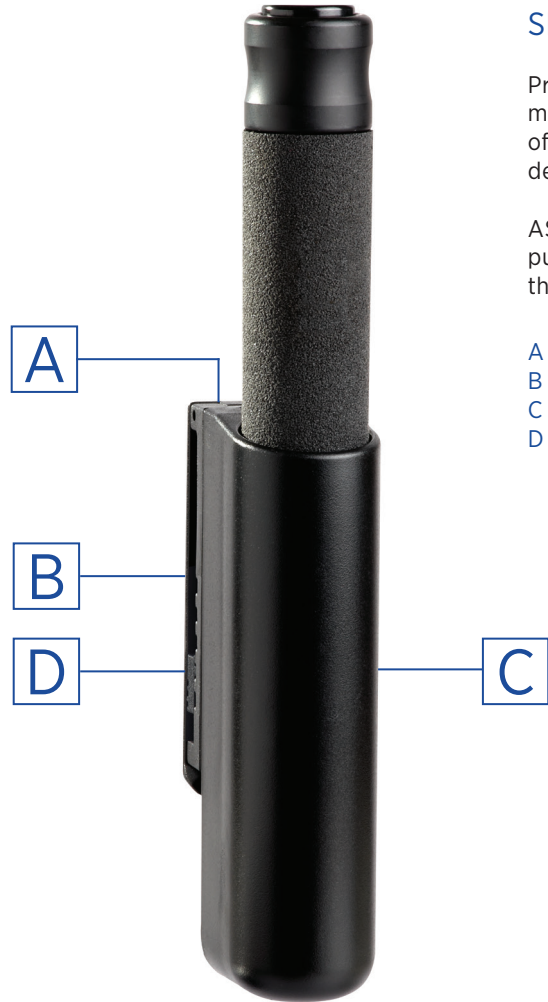
FUSION T\* | 35638



TACTICAL T\* | 35637

\* Compatible with button release batons only

# BATONS SCABBARDS



## SECURE RETENTION, INSTANT ACCESS

Protection. Portation. Presentation. The three criteria of any baton scabbard. Each carrier must define a compromise between security and speed of presentation. It must provide a level of protection without compromising access. The case must secure the baton without hindering deployment.

ASP Scabbards allow a firm grip and rapid presentation. Each design is fabricated for a specific purpose. Designs so unique that they are patented. Under the most severe tactical conditions, they have no equal.

- A Internal Retention Clip
- B Snap-Loc Belt Loop
- C Rotating Body
- D Adjustable Belt Width



*180° Restricted Rotation*

ENVOY 50 | 52446

## ENVOY SCABBARDS

The Envoy Scabbard rotates to 7 distinct positions on the duty belt. It will not rotate beyond horizontal or compromise the security of a baton. A retracted Talon Baton may be rapidly presented, yet it is securely retained during dynamic confrontations.



ENVOY 50 | 52446



ENVOY PADDLE 50 | 52447

ENVOY	40	50	60
BLACK	52246	52446	52646
PADDLE			
BLACK	52247	52447	52647

## REVOLUTION SCABBARDS

The rotating hood of Revolution Scabbards protects the cap and grip while securing a Talon Baton in the carrier. The flexible cover may be rapidly displaced to allow presentation of the baton. It is easily repositioned to lock the baton in place.



REVOLUTION 50 | 52463

REVOLUTION	40	50	60
BLACK	52263	52463	52663

## DUTY SCABBARDS

These soft design carriers are ideal for investigative and security personnel. The scabbard clips onto the belt and securely cases a retracted or expanded Infinity Baton.



DUTY 50 | 52459

A SERIES	30	40	50
BALLISTIC	52244	52444	52644
T SERIES	40	50	60
BALLISTIC	52259	52459	52659

## COVER SCABBARDS

These protective cases are ideal for military and security personnel. The scabbard positions the baton handle under the hood to maintain a low profile.



COVER 50 | 52479

COVER	40	50	60
BALLISTIC	52279	52479	52679

## COVERT SCABBARDS

These top grain leather scabbards slide onto the dress belt to carry and conceal a retracted Infinity Baton.



HORIZON

A SERIES | 35656

T SERIES | 35657



ESCORT

A SERIES | 35658

T SERIES | 35659

## COMBO CASES

ASP Combination Cases hold an Infinity Baton and related accessories. They are compact clip-on carriers that are convenient, low profile and secure.

The Duo Case secures an Agent Baton and Tungsten light.

Baton & Cuff Cases hold an Agent or Talon Baton with a Chain or Hinge Cuff.

The BRL carrier positions an Agent Baton, Tri-Fold Restraint and Tungsten light on a plainclothes belt.



DUO CASE | 35660



AGENT & CUFF CASE | 35653

TALON & CUFF CASE | 35654



BRL CASE | 35655



Protecting Those Who Protect

ASP, INC · Box 1794 · Appleton, WI 54912 · (920) 735-6242 · [asp-usa.com](http://asp-usa.com)

© 2020 ASP



CATALOG 29