



Defender Series Fairing

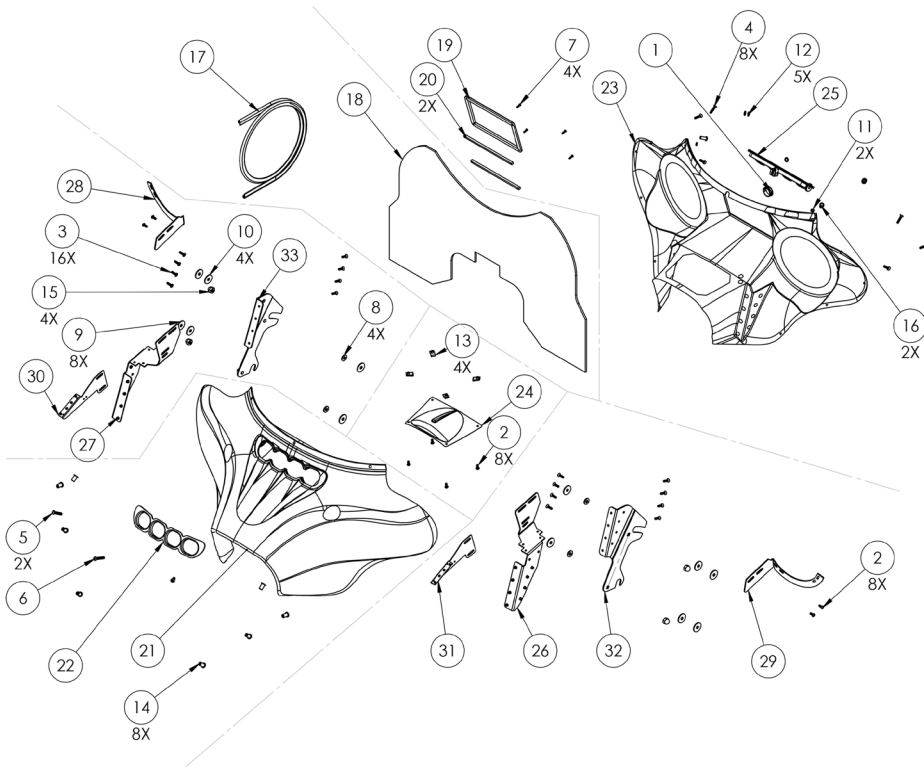
Series information

Installation Instructions



Diagram

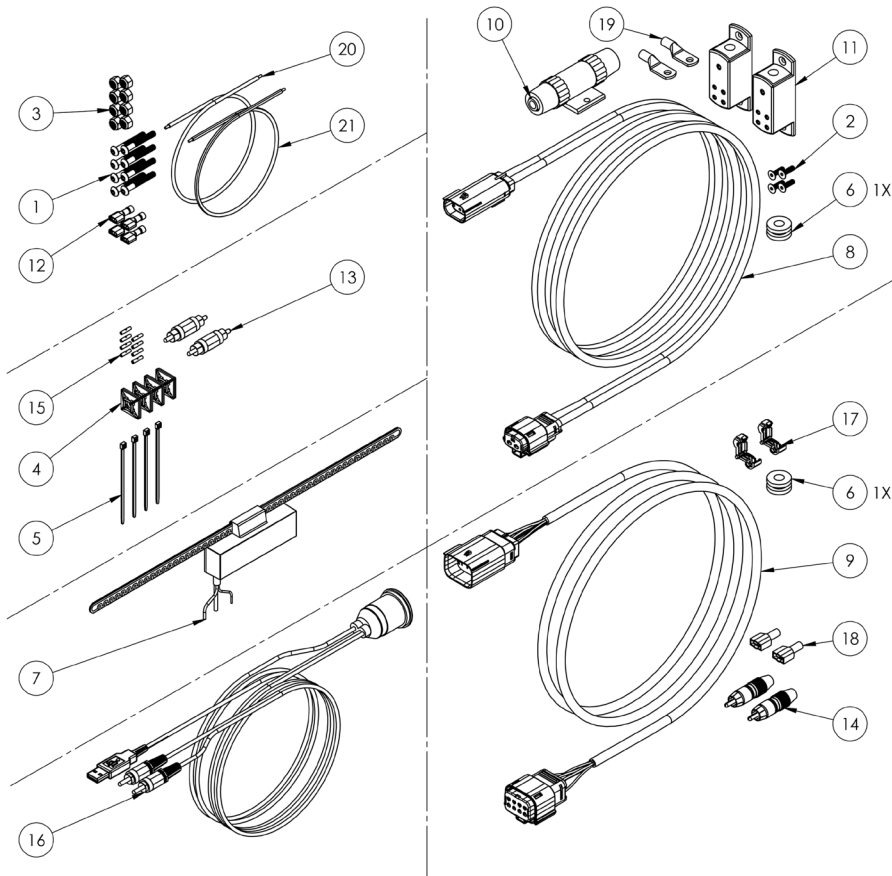
Fairing Kit



ITEM NO.	PART NUMBER	PART NAME	QTY.
1	B269	Locking Panel Plugs	1
2	B054	#10-24 x 0.5" SS Button Head Cap Screw	8
3	B055	#10-24 x 0.75" SS Flat Head Cap Screw	16
4	B056	#10-32 x 1.0" SS Flat Head Cap Screw, Blk	8
5	B058	1/4-20 X 1" Button Head Cap Screw	2
6	B063	1/4-20 x 1.5" SS Button Head Cap Screw	1
7	B071	#6-32 x 1/2" SS Button Head C/S	4
8	B102	0.334 ID x 0.74 OD x 0.10 Thick Washer, AL	4
9	B103	0.334 ID x 1.125 OD x 0.08 Thick Washer, AL	8
10	B104	0.334 ID x 1.125 OD x 0.08 Thick Washer, Nylon	4
11	B106	#8 SS Washer	2
12	B111	1/2" Rubber Washer	5
13	B151	#10-24 Clip Nut	4
14	B152	#10-32 Well Nut	8
15	B154	5/8-18 SS Acorn Nut	4
16	B157	1/4"-20 x .70" SS Binding Post	2
17	B260	Rubber Edge Trim	1
18	B262	Sound Dampening Mtrl	1
19	B265	SONY Double Din Bezel	1
20	B268	Stereo Bezel Bolting Bar	2
21	BH100	Outer Fairing Sub Assembly	1
22	BH130	Outer Vent Bezel	1
23	BH202	Inner Fairing Sub Assembly	1
24	BH250	Access Panel	1
25	BH270	Aluminum Vent Assembly	1
26	BH410	Inner Support Bracket-LH Rev C	1
27	BH411	Inner Support Bracket-RH Rev C	1
28	BH420	Inner Speaker Support-LH Rev C	1
29	BH421	Inner Speaker Support-RH Rev C	1
30	BH430	Amp Bracket A Rev A	1
31	BH431	Amp Bracket B Rev A	1
32	BHK450-1	Road King Mounting Bracket - Left - Chrome	1
33	BHK451	Road King Mounting Bracket Right	1

Diagram

Electrical Kit



ITEM NO.	PART NUMBER	DESCRIPTION	QTY.
1	L053	8-32 x 1.25" SS Button-Head Cap Screw	8
2	L059	#6-32 X .518-8 SS FLAT-HEAD SCKT CAP SCREW	4
3	L150	8-32 SS Nylock	8
4	L252	4 Way Nylon Adhesive Cable Tie	4
5	L253	3" Zip-Tie	4
6	L255	0.5in Rubber Grommet	2
7	L530	Hidden Antenna	1
8	L550	Power Wire Harness	1
9	L551	Stereo Wire Harness	1
10	L552	Fuse Holder w/ 100W AMP	1
11	L554	Power Distribution Block SQVLD48	2
12	L555	Insulated Female Quick Disconnect	4
13	L556	Male-Male RCA Adapter	2
14	L558	Male RCA to Wire Adapter	2
15	L560	Noninsulated Butt Splice 22-18AWG	8
16	L566	USB&Aux Port Adapter - B00VT477N4	1
17	L567	T-Tap In-line Connector	2
18	L568	22-18AWG Male Quick Disconnect	2
19	L569	8AWG Copper Lug	2
20	L570	20AWG Gray Speaker Wire (15in long)	1
21	L571	20AWG Gray w/ Blk Tracer Speaker Wire (15in)	1

****Disclaimer****

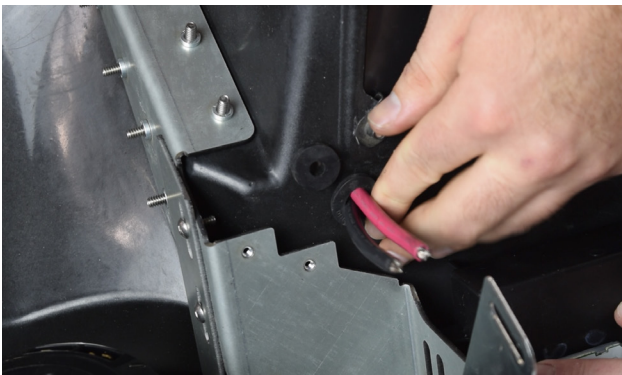
This should be something that is agreed to before completing purchase of the Defender Series Fairing Kits.

This kit may not work with all handlebars. PLEASE MOCK UP BEFORE PAINTING TO ENSURE FITMENT!

We will not be responsible for parts that do not fit. Modifying your bike is at your own risk and should be completed by professionals. Please reach out to your local audio installation professionals for help if help is needed.



1. Fasten inner support bracket(s) left and right (pn#26,27) to mounting bracket(s) left and right (pn#32,33) to inner fairing assembly (pn#23)



2. *Insert rubber grommet's (pn#?) into inner fairing (pn#23) and push wires through.
 - Quick Tip. Applying dish soap will allow the wires to pass through much easier.



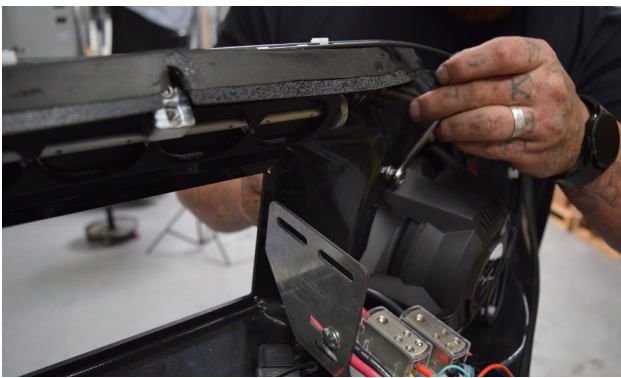
3. Install Radio Bezel (pn#19)



4. Install Radio. Careful to use appropriate shared hardware for left and right amp bracket(s) assembly (pn#30,31)
 - If using single din radio and purchased our optional glove box assembly; install glove box. the wires to pass through much easier.



5. Install left and right amplifier bracket assembly (pn#30,31)



6. Install speakers from outside of inner fairing and speaker support bracket from inside (pn#28,29)



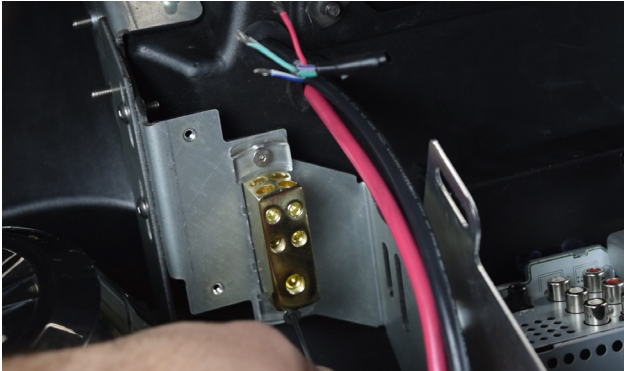
7. Install Plug. Install USB power port.



8. Install clip nuts (pn#13) to inner fairing assembly (pn#23)



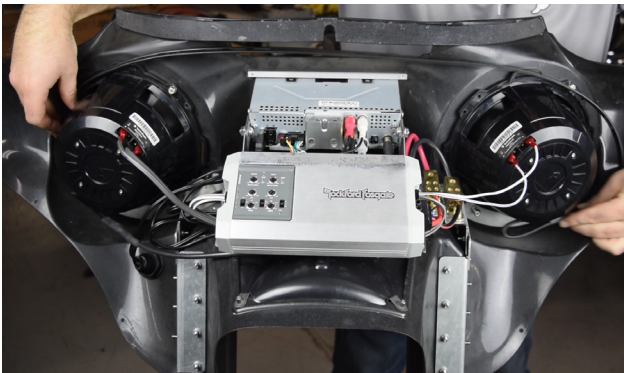
9. Secure access panel (pn#24) from the outside of the inner fairing with hardware(pn#2)



10. Install power distribution block(s) (pn#11)



11. Install amplifier. Many amplifiers may work with our installation kit. We used Rockford Fosgate TM400X4AD for our instructions. The amplifier bracket accommodates up to (H x W x D) 1.7" x 4.25" x 8.41"



12. Mount & fasten the antenna using included 4 way nylon adhesive cable tie (pn# 4w)



13. Install stereo bezel bolting bar (pn# 20).



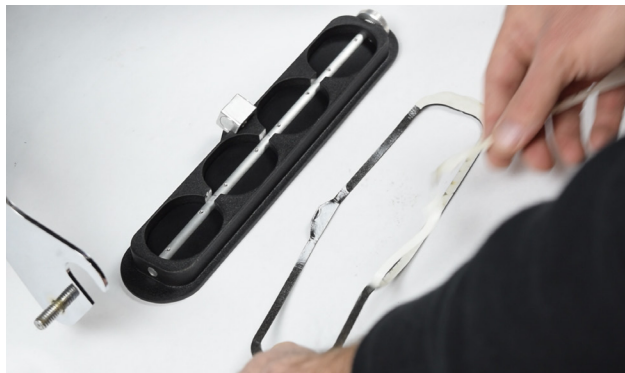
14. Install pre-cut sound dampening material to inside of outer fairing sub assembly (pn#21)



15. Roll and press the dampening material to ensure effective noise dampening(pn#21)



16. Install outer fairing sub assembly (pn#21).
• Quick Tip. Securing and fitting outer fairing (pn#21) over nose of inner fairing (pn#23) has to be exact but allows for mounting holes to line up.



17. Install seal on working vent.



16. Install working vent(pn# 25). The vent is secured by windshield installation.



17. Install windshield using windshield mounting hardware (pn#16)x2 (pn#12)x5 (pn#5)x2 (pn#6)x1



18. Install docking hardware to bike

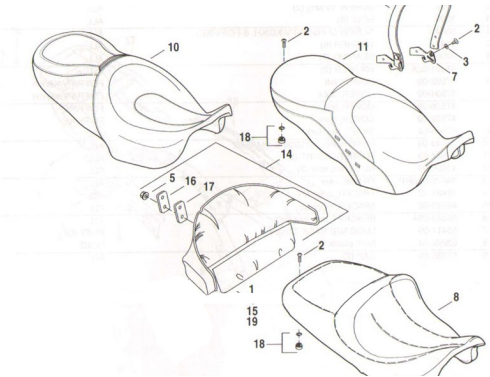


19. Relocate blinkers. Attach highway bar and lights.

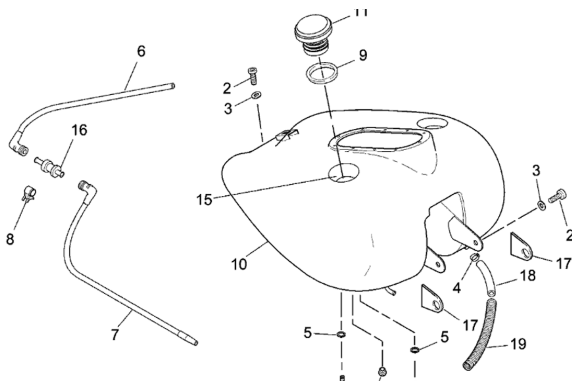
Defender Series Fairing

Electrical Wiring Kit

Installation Instructions



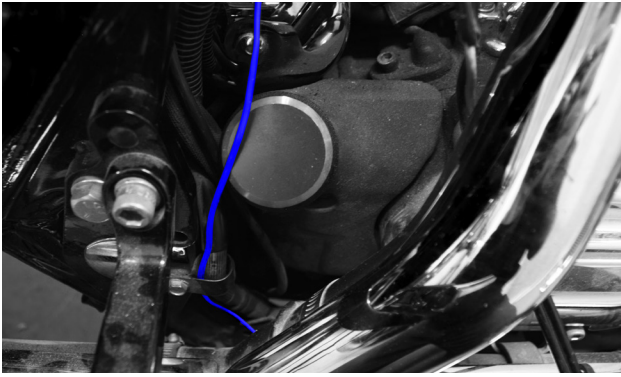
1. Remove motorcycle seat. Disconnect and remove battery. Please refer to your motorcycles service guide for complete instructions.



2. Remove gas tank. Please refer to your motorcycles service guide for complete instructions.



3. Feed and route stereo wire harness (pn# 9) through opening directly underneath handlebar mount leaving connector protruding approximately 8"
 - Quick Tip - Run harness under or over factory harness into battery compartment.



5. Route light green wire down to brake light switch on right side of the motorcycle slightly to the right of the center of the motorcycle.

Blue wire displayed to be more visible.



6. Use provided T tap connector (pn# 17) to tie the light green wire to red wire of the brake light switch



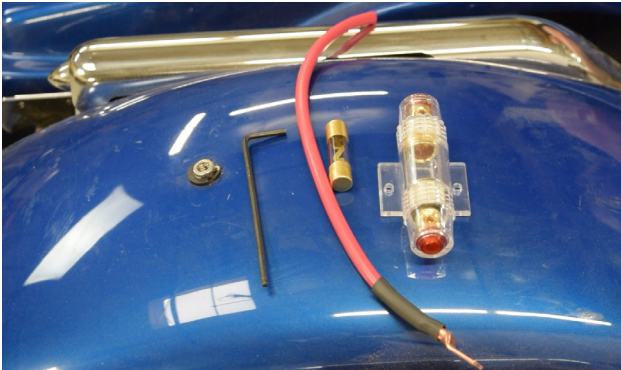
7. Route red wire around battery compartment and back up to rear fender wire harness



8. Feed power wire harness through opening directly under underneath handlebar mount. Following the same path of the stereo wire harness proceed to battery compartment.



9. Find a good location within 18" of the battery compartment to mount provided in line fuse block (pn# 11) and 100w amp fuse (pn# 10).



11. Cut RED cable only. Do not cut the black cable. Keep extra red cable length for later step.

11. Cut red cable to length of fuse box to battery.



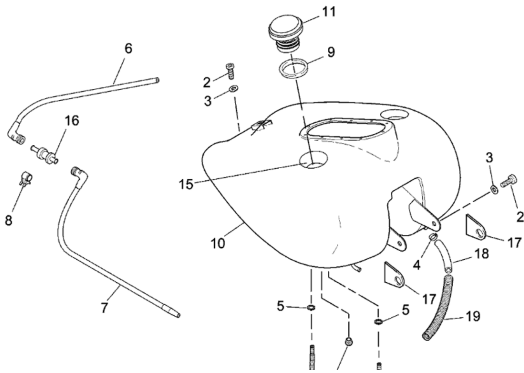
12. Using remaining cut off length of red cable from previous step; attach remaining red wire to the other end of the fuse holder proceed to battery compartment.



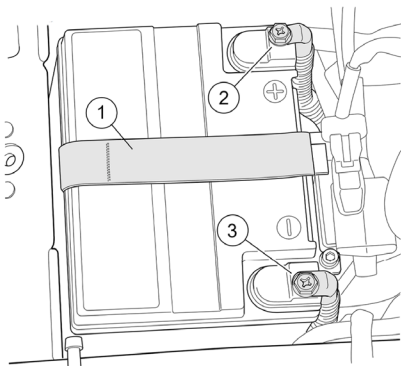
13. Using supplied battery lugs crimp on red and black wires. (pn# 19)



14. Using provided zip ties secure power wire harness and stereo cable harness to frame away from engine.
Quick Tip - keep wires away from potentially hot surfaces and areas of the engine.



15. Reinstall gas tank. Please refer to motorcycle service guide for full instructions.



16. Reinstall battery. Please refer to motorcycle service guide for full instructions.



18. Complete final mounting of fairing and torque acorn nuts to 30-40 inch lbs.