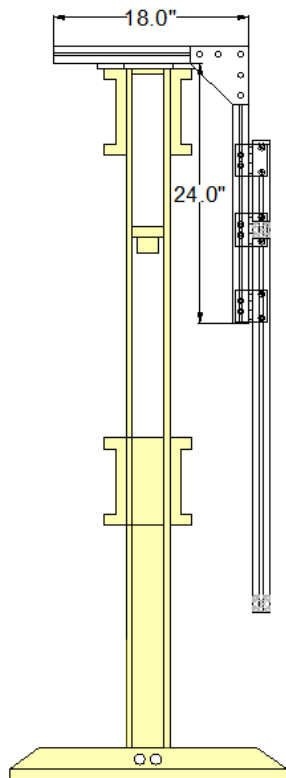


## New Hinged Hydraulic Press Guard

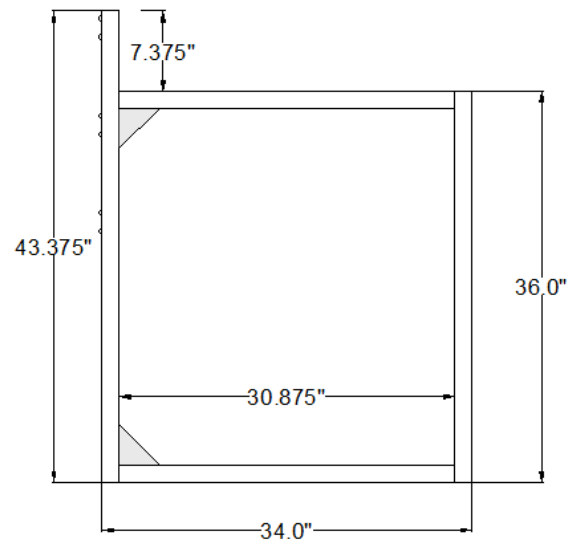
Constructed from 40mm and 40x80mm aluminum extrusion.  
¼" thick high impact strength polycarbonate (lexan)

This machine shown is built with these dimensions, a  
36" tall door. Height of the door is up to the customer.

LEFT SIDE FRAME/DOOR



FRONT VIEW DOOR





Mounts to the top of the machine with slotted  $\frac{1}{2}$ " thick aluminum brackets



Hinges open 180 degrees to the left



Simple chain and eye bolt setup for keeping the door closed for operation.





Door in good position for this manually operated machine.



Door moved up on the frame

Has adjustment in/out  
when installing to  
insure adequate table  
or part clearance



The T-slots of the  
extrusion allow the  
door to be adjusted  
some when installing.

Braced to machine in  
one spot for rigidity.  
All mounting hardware  
included.