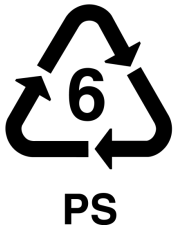
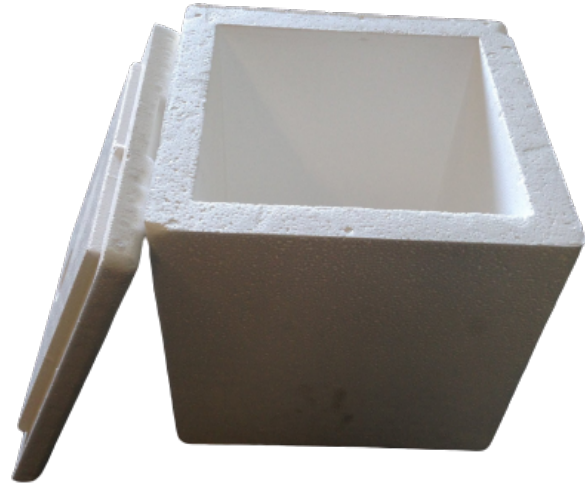




12x12x12 BOX/LID

- Leak resistant, reliable, reusable and recyclable
- 1-1/4 Thick wall for increased insulation and stacking
- Perfect for shipments of fresh or frozen perishable items



ITEM	OUTSIDE DIM. (IN)			INSIDE DIM. (IN)			WALL (IN)	SETS / BUNDLE	BUNDLE DIMENSION	
	L	W	H	L	W	H			IN.	LBS.
12x12x12 BOX/LID	12	12	12	9-1/2	9-1/2	9-1/2	1-1/4	27	36 x 36 x 36	17

EPS SOLUTIONS ARE IDEAL FOR:

- High performance & Economical needs
- Short to mid-range durations: 24 to 72 hrs.
- Temperature ranges: 35 to 86° F (2 to 30° C)
- Parcel or palletized shipping containers
- FDA approved for direct food contact
- 100% recyclable material

AVAILABLE UPON REQUEST:

- Branding Design
- Custom Packaging
- Gel Ice Packs / Heat Packs
- Plain or Printed Corrugated Cartons

YOUR SOURCE FOR TEMPERATURE SENSITIVE PACKAGING

Glacier Pac has been providing packaging for 30 years. Knowing the most valuable part is what is on the inside of the box, we work hard to make sure that you are covered. Our products are the top quality in the industry.