

Part Number: P3A-BDFT-REC-PX-0.31-PFXX-80-STWL

Product Description: 3 Wire Pt100 Surface Sensor with a Miniature Bolt Down or Cement-On Design and 80" Inches (6.6ft of 2 meters) of PFA Insulated Lead Wire with Stripped Ends Termination

Surface Mount RTD Pt100 RTD 3 Wire Design Bolt On or Cement Down

Fast Response Miniature Aluminum Fitting with 80" (2 meters) of Lead Wire

1/2" (.500) x 5/16" (.312) Surface Mount Fitting

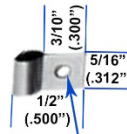
.114" Diameter Hole for #4 Screw (Can be Increased)

Sensor Operating Range
-90°F to 500°F
(-70 to 260 C)

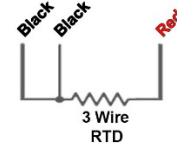
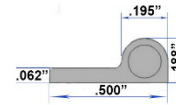
80" (2 Meters) Long PFA Insulated 3 Conductor Lead Wire with Stripped Ends



Surface Mount RTD Miniature Aluminum Bolt Down Fitting Dimensions and Wire Diagram



.114" Diameter Hole for #4 Screw
Can be Increased



Temperature Sensor Type	3 Wire Pt100 (Platinum 100 Ohm) RTD Class A accuracy (0.00385 ohm change per degree C)
Response Time	Approx 3 seconds or less
Surface Fitting Length	0.312" (8.0 mm)
Surface Fitting Width	0.500" (13 mm)
Surface Fitting Material	Aluminum
Mounting Hole Diameter	0.114" (3.855 mm)
Sensor Temperature Range	-90 to 500°F (-70 to 260°C)
Sensor Transition to Lead Wire	High Performance 500°F (260°C) Rated Black Epoxy
Lead Wire Length	80" Inches (6.6ft or 2 Meters) Long
Lead Wire Insulation	PFA with -392°F to 500° F (260°C) rating
Lead Wire Construction	26 Gage Stranded (7/34) Nickel Plated Copper. 3 conductor PFA insulated and twisted with a PFA outer-jacket and .085" diameter
Power Supply	1 mA or less from Instrument or Controller
Wire Termination - Instrument Connection	Stripped ends with 1/2" long insulation and 1/2" bare wire
Color Coding	2 Black Wires and 1 Red Wire with Overall White Jacket
Regulation Compliance	RoHS and Reach Compliant