

Part Number: P3A-BDFT-REC-PX-0.31-PFXX-40-STWL

Product Description: 3 Wire Pt100 Surface Sensor with a Miniature Bolt Down or Cement-On Design and 40" (1 meter) of PFA Insulated Lead Wire with Stripped Ends Termination

**Bolt On or Cement Down
Surface Mount RTD
Pt100 RTD 3 Wire Design**

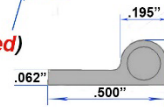
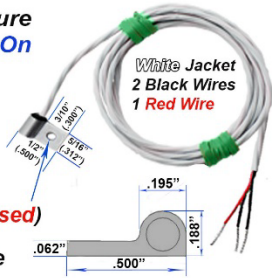
**Fast Response Miniature
Bolt Down or Cement On
Aluminum Fitting**

**1/2" (.500) x 5/16" (.312)
Surface Mount Fitting**

**.114" Diameter Hole for
#4 Screw (Can be Increased)**

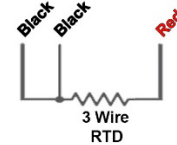
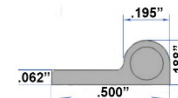
**Sensor Operating Range
-90°F to 500°F
(-70 to 260 C)**

**40" (1 Meter) Long PFA
Insulated 3 Conductor Lead
Wire with Stripped Ends**



**Surface Mount RTD Miniature
Aluminum Bolt Down Fitting
Dimensions and Wire Diagram**

**.114" Diameter Hole
for #4 Screw
Can be Increased**



Temperature Sensor Type	3 Wire Pt100 (Platinum 100 Ohm) RTD (Resistance Temperature Detector) Class A accuracy 0.15°C at 0°C 0.35 at 100°C (0.385 ohm change per degree C)
Surface Fitting Length	0.312" (8.0 mm)
Surface Fitting Width	0.500" (13 mm)
Surface Fitting Material	Aluminum
Mounting Hole Diameter	0.114" (3.855 mm)
Sensor Temperature Range	-90 to 500°F (-70 to 260°C)
Sensor Transition to Lead Wire	High Performance 500°F (260°C) Rated Black Epoxy
Lead Wire Length	40" Inches (3.3ft or 1 Meter) Long
Lead Wire Insulation	PFA with -392°F to 500° F (260°C) rating
Lead Wire Construction	26 Gage Stranded (7/34) Nickel Plated Copper. 3 conductor PFA insulated and twisted with a PFA outer-jacket and .085" diameter
Power Supply	1 mA or less from Instrument or Controller
Wire Termination - Instrument Connection	Stripped ends with 1/2" long insulation and 1/2" bare wire
Color Coding	2 Black and 1 Red Wires with Overall White Jacket
RoHS Status	Compliant to RoHS 2 and 3 directives