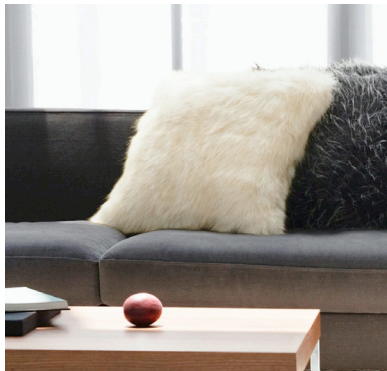


Maintenance Guide



Congoleum

IMMEDIATELY AFTER INSTALLATION

- Ask your installer about the method used for installation. If “full spread”, keep traffic light during the first 24 hours so adhesive can dry properly.
- If the floor has been seamed, avoid stepping on the seam sealer for 24 hours so it can dry undisturbed.
- Avoid scrubbing or washing the floor for at least three days after installation. Spot clean the floor, avoiding all seams. Clean any adhesive residue with a clean, white cloth dampened with mineral spirits.*

CAUTION: *Mineral spirits are flammable liquids. Please follow precautions listed on the container.

PREVENTATIVE CARE

- Make sure furniture legs have large surface, nonstaining floor protectors. Replace small, narrow metal or dome-shaped glides with smooth, flat glides, that are flat on the floor. Glides should be equipped with self-adhesive felt pads to avoid scratching the surface of the floor. The pads should be checked periodically for grit and wear and replaced when necessary.
- Heavy furniture or appliances should be equipped with flat, nonstaining composition furniture casters or cups of appropriate size - available square from 1 1/2" to 2 5/8" and round from 1 3/8" to 1 5/8".
- Moveable appliances and furniture should be equipped with easily swiveling casters. They should be at least 2" in diameter with nonstaining hard rubber treads with a minimum 3/4" flat surface width. Do not use ball-shaped casters.
- Place mats at outside entrances to prevent dirt, grit and soil from being tracked onto your floor. Use 100% latex-backed mats (labeled nonstaining), because some rubber-backed mats or carpets may permanently discolor your floor.
- To help prevent staining from asphalt tracking, we recommend the use of a latex-based driveway sealer.
- Draw drapes and blinds during peak periods of strong sunlight. Flooring, like other home furnishing products, may discolor or fade when over-exposed to the sun.
- Heat-producing appliances such as a refrigerator or range, or hot air registers emitting a direct flow of heat in excess of 120° F, even intermittently, can scorch, burn, discolor or fade your floor. Cigarettes, matches and other very hot objects can also damage your floor.

- Avoid wearing stiletto or spiked heels on your floor. These types of heels can indent or damage many types of floors.

DO NOT USE STEAM CLEANERS on Congoleum Floors, they can permanently damage the floor.

REGULAR CARE

- Sweep or vacuum regularly to remove dirt and grit that can abrade, dull or scratch your floor. Do not use a vacuum with a beater brush, because it may damage the floor's surface.
- Wipe up spills promptly with a damp cloth or mop.
- For a more thorough cleaning, wash your floor with Bright 'N Easy No-Rinse Cleaner or other suitable, non-detergent based resilient floor cleaner.

CAUTION: Avoid one-step “mop and polish” products, dishwashing liquids and oil-based cleaners. These may leave a residue which can attract dirt and dull your floor's finish. Avoid cleaners that contain abrasives or solvents which may permanently damage your floor.

- Remove excess water after washing the floor.

INITIAL RESIDENTIAL MAINTENANCE

- Sweep or vacuum the floor to remove loose dirt.
- If needed, after installation use lighter fluid applied with a clean cloth to remove scuff marks and adhesive residue. Keep traffic off treated area for 30 minutes.

CAUTION: Lighter fluid is a flammable solvent. Carefully read and follow cautionary information on label.

CAUTION: Wash the floor with Bright 'N Easy No-Rinse Cleaner or other suitable resilient floor cleaner.

HOW TO TREAT STAINS, SPILLS AND SCUFFS

Follow the remedies in order. Unless instructed otherwise, use a clean, white cloth or towel with the recommended liquids. Always rinse the affected area with clean water after treatment.	
STAINS AND SPILLS	REMEDY
Acids, Alkalis Dye, Dye Markings, Iodine, Mercurochrome, Blood, Food, Candy, Rust†, Ketchup, Mustard, Fruit/Fruit Juices, Urine, Excrement, Cleaners, Strong Soaps, Grass, and Vomit	<ul style="list-style-type: none"> • Scrub area with Bright 'N Easy No-Rinse Cleaner full strength. • Rub the area with a 10 to 1 dilution of water to liquid bleach. • Rub the area with isopropyl alcohol*. † If rust stain does not respond, use lemon juice or a cream of tartar solution.
STAINS AND SPILLS	REMEDY
Dry Cleaning Fluids, Lacquer, Latex Paints, Nail Polish, Solvents, Oil-Based Paints, Wood Stains, and Varnish	<ul style="list-style-type: none"> • If substance is dry, gently peel it from the floor. (Avoid sharp instruments that could scratch the floor.) • Scrub area with Bright 'N Easy No-Rinse Cleaner. • Rub lightly with mineral spirits or paint thinner*.
SUBSTANCE THAT WON'T WIPE UP	REMEDY
Adhesives, Asphalt, Chewing Gum, Oil, Grease, Candle Wax, and Tar	<ul style="list-style-type: none"> • Carefully remove excess with a dull kitchen knife. • Scrub area with Bright 'N Easy No-Rinse Cleaner. • Rub lightly with mineral spirits, isopropyl alcohol* or lighter fluid*.
SCUFFS AND SMUDGES	REMEDY
Rubber Heel Marks, Scuffs, Shoe Polish, and Smudges	<ul style="list-style-type: none"> • Scrub area with Bright 'N Easy No-Rinse Cleaner. • Rub lightly with isopropyl alcohol* or lighter fluid*.
* Caution: Isopropyl alcohol, lighter fluid, mineral spirits and paint thinner are flammable solvents. Carefully read and follow cautionary information on label. Keep traffic off treated area for 30 minutes.	

This is an abbreviated warranty summary, please find complete specific warranties for each product on our website

www.congoleum.com/warranty-information

AIRSTEP

RESIDENTIAL LIMITED WARRANTY

PRODUCTS	AirStep Advantage	AirStep Evolution	AirStep Plus
COVERAGE	WARRANTY PERIOD		
<ul style="list-style-type: none"> • will not wear through • will be free of manufacturing defects • will not stain including stains from asphalt tracking, rubber - backed mats and common household items • will not permanently scuff from shoe soles including sneakers • will not fade or discolor from heat or sunlight • will not discolor from mold, mildew or alkali • will not gouge, rip or tear from normal use • will not permanently indent when proper floor protectors are used 	LIFETIME	50 YEARS	20 YEARS
ADDITIONAL SCOTCHGARD™ PROTECTOR LIMITED WARRANTY			
<ul style="list-style-type: none"> • will be easy to clean • will repel dirt and grime 	15 YEARS	15 YEARS	15 YEARS
Correct installation practices must be followed to ensure a trouble-free installation. While installation errors are the responsibility of your flooring installer and not covered by Congoleum's warranty. If the flooring is correctly installed following all guidelines in the AirStep Installation Instructions, your floors will be warranted as follows:			
1 - Not to curl 2 - Not to open at seams 3 - Not to buckle 4 - Not to release over joints in underlayment panels	20 YEARS	20 YEARS	20 YEARS
The conditions 1,2,3 and 4 above will be warranted as long as the flooring is installed in an occupied residence that maintains a temperature range of 55°F to 100°F. Any of the above conditions will not be covered if caused by job site environmental conditions in new construction or renovation work. Labor coverage - If labor paid for when original floor was installed: AirStep Advantage, AirStep Evolution, AirStep Plus - 5 years if labor paid for when original floor was installed.			

IMMEDIATELY AFTER INSTALLATION

- Ask your installer about the method used for installation. If “full spread”, keep traffic light during the first 24 hours so adhesive can dry properly.
- If the floor has been seamed, avoid stepping on the seam sealer for 24 hours so it can dry undisturbed.
- Avoid scrubbing or washing the floor for at least three days after installation. Spot clean the floor, avoiding all seams. Clean any adhesive residue with a clean, white cloth dampened with mineral spirits.*

CAUTION: *Mineral spirits are flammable liquids. Please follow precautions listed on the container.

PREVENTATIVE CARE

- Make sure furniture legs have large surface, nonstaining floor protectors. Replace small, narrow metal or dome-shaped glides with smooth, flat glides, that are flat on the floor. Glides should be equipped with self-adhesive felt pads to avoid scratching the surface of the floor. The pads should be checked periodically for grit and wear and replaced when necessary.
- Heavy furniture or appliances should be equipped with flat, nonstaining composition furniture casters or cups of appropriate size - available square from 1 1/2" to 2 5/8" and round from 1 3/8" to 1 5/8".
- Moveable appliances and furniture should be equipped with easily swiveling casters. They should be at least 2" in diameter with nonstaining hard rubber treads with a minimum 3/4" flat surface width. Do not use ball-shaped casters.
- Place mats at outside entrances to prevent dirt, grit and soil from being tracked onto your floor. Use 100% latex-backed mats (labeled nonstaining), because some rubber-backed mats or carpets may permanently discolor your floor.
- To help prevent staining from asphalt tracking, we recommend the use of a latex-based driveway sealer.
- Draw drapes and blinds during peak periods of strong sunlight. Flooring, like other home furnishing products, may discolor or fade when over-exposed to the sun.
- Heat-producing appliances such as a refrigerator or range, or hot air registers emitting a direct flow of heat in excess of 120° F, even intermittently, can scorch, burn, discolor or fade your floor. Cigarettes, matches and other very hot objects can also damage your floor.

- Avoid wearing stiletto or spiked heels on your floor. These types of heels can indent or damage many types of floors.

DO NOT USE STEAM CLEANERS on Congoleum Floors, they can permanently damage the floor.

REGULAR CARE

- Sweep or vacuum regularly to remove dirt and grit that can abrade, dull or scratch your floor. Do not use a vacuum with a beater brush, because it may damage the floor's surface.
- Wipe up spills promptly with a damp cloth or mop.
- For a more thorough cleaning, wash your floor with Bright 'N Easy No-Rinse Cleaner or other suitable, non-detergent based resilient floor cleaner.

CAUTION: Avoid one-step “mop and polish” products, dishwashing liquids and oil-based cleaners. These may leave a residue which can attract dirt and dull your floor's finish. Avoid cleaners that contain abrasives or solvents which may permanently damage your floor.

- Remove excess water after washing the floor.

INITIAL RESIDENTIAL MAINTENANCE

- Sweep or vacuum the floor to remove loose dirt.
- If needed, after installation use lighter fluid applied with a clean cloth to remove scuff marks and adhesive residue. Keep traffic off treated area for 30 minutes.

CAUTION: Lighter fluid is a flammable solvent. Carefully read and follow cautionary information on label.

CAUTION: Wash the floor with Bright 'N Easy No-Rinse Cleaner or other suitable resilient floor cleaner.

HOW TO TREAT STAINS, SPILLS AND SCUFFS

Follow the remedies in order. Unless instructed otherwise, use a clean, white cloth or towel with the recommended liquids. Always rinse the affected area with clean water after treatment.	
STAINS AND SPILLS	REMEDY
Acids, Alkalis Dye, Dye Markings, Iodine, Mercurochrome, Blood, Food, Candy, Rust†, Ketchup, Mustard, Fruit/Fruit Juices, Urine, Excrement, Cleaners, Strong Soaps, Grass, and Vomit	<ul style="list-style-type: none"> • Scrub area with Bright 'N Easy No-Rinse Cleaner full strength. • Rub the area with a 10 to 1 dilution of water to liquid bleach. • Rub the area with isopropyl alcohol*. † If rust stain does not respond, use lemon juice or a cream of tartar solution.
STAINS AND SPILLS	REMEDY
Dry Cleaning Fluids, Lacquer, Latex Paints, Nail Polish, Solvents, Oil-Based Paints, Wood Stains, and Varnish	<ul style="list-style-type: none"> • If substance is dry, gently peel it from the floor. (Avoid sharp instruments that could scratch the floor.) • Scrub area with Bright 'N Easy No-Rinse Cleaner. • Rub lightly with mineral spirits or paint thinner*.
SUBSTANCE THAT WON'T WIPE UP	REMEDY
Adhesives, Asphalt, Chewing Gum, Oil, Grease, Candle Wax, and Tar	<ul style="list-style-type: none"> • Carefully remove excess with a dull kitchen knife. • Scrub area with Bright 'N Easy No-Rinse Cleaner. • Rub lightly with mineral spirits, isopropyl alcohol* or lighter fluid*.
SCUFFS AND SMUDGES	REMEDY
Rubber Heel Marks, Scuffs, Shoe Polish, and Smudges	<ul style="list-style-type: none"> • Scrub area with Bright 'N Easy No-Rinse Cleaner. • Rub lightly with isopropyl alcohol* or lighter fluid*.
* Caution: Isopropyl alcohol, lighter fluid, mineral spirits and paint thinner are flammable solvents. Carefully read and follow cautionary information on label. Keep traffic off treated area for 30 minutes.	

This is an abbreviated warranty summary, please find complete specific warranties for each product on our website

www.congoleum.com/warranty-information

ARMORCORE

RESIDENTIAL LIMITED WARRANTY

PRODUCTS	ArmorCore Pro UR	ArmorCore Pro	ArmorCore
COVERAGE	WARRANTY PERIOD		
<ul style="list-style-type: none"> • will not wear through • will be free of manufacturing defects • will not stain including stains from asphalt tracking, rubber - backed mats and common household items • will not permanently scuff from shoe soles including sneakers • will not fade or discolor from heat or sunlight • will not discolor from mold, mildew or alkali • will not gouge, rip or tear from normal use • will not permanently indent when proper floor protectors are used 	10 YEARS	5 YEARS	5 YEARS
ADDITIONAL STAIN DEFENSE SYSTEM LIMITED WARRANTY			
<ul style="list-style-type: none"> • will be easy to clean • will repel dirt and grime 	10 YEARS	---	---
Correct installation practices must be followed to ensure a trouble-free installation. While installation errors are the responsibility of your flooring installer and not covered by Congoleum's warranty. If the flooring is correctly installed following all guidelines in the ArmorCore Installation Instructions, your floors will be warranted as follows:			
1 - Not to curl 2 - Not to open at seams 3 - Not to buckle 4 - Not to release over joints in underlayment panels	10 YEARS	5 YEARS	5 YEARS
The conditions 1,2,3 and 4 above will be warranted as long as the flooring is installed in an occupied residence that maintains a temperature range of 55°F to 100°F. Any of the above conditions will not be covered if caused by job site environmental conditions in new construction or renovation work. Labor coverage - If labor paid for when original floor was installed: ArmorCore and ArmorCore Pro - 1-3 Years at 100% if labor paid for when original floor was installed; no labor after 3 years. ArmorCore Pro UR - 1-3 Years at 100% if labor paid for when original floor was installed; 50% labor for 4-5 years; no labor after 5 years.			

IMMEDIATELY AFTER INSTALLATION

- Sweep or vacuum the floor to remove loose dirt.
- Avoid scrubbing or washing the floor for at least three days after installation. Spot clean the floor. Clean any adhesive residue with a clean, white cloth dampened with mineral spirits.*

CAUTION: *Mineral spirits are flammable liquids. Please follow precautions listed on the container.

PREVENTATIVE CARE

- Make sure furniture legs have large surface, nonstaining floor protectors. Replace small, narrow metal or dome-shaped glides with smooth, flat glides, that are flat on the floor. Glides should be equipped with self-adhesive felt pads to avoid scratching the surface of the floor. The pads should be checked periodically for grit and wear and replaced when necessary.
- Heavy furniture or appliances should be equipped with flat, nonstaining composition furniture casters or cups of appropriate size - available square from 1 1/2" to 2 5/8" and round from 1 3/8" to 1 5/8".
- Moveable appliances and furniture should be equipped with easily swiveling casters. They should be at least 2" in diameter with nonstaining hard rubber treads with a minimum 3/4" flat surface width. Do not use ball-shaped casters.
- Place mats at outside entrances to prevent dirt, grit and soil from being tracked onto your floor. Use 100% latex-backed mats (labeled nonstaining), because some rubber-backed mats or carpets may permanently discolor your floor.
- To help prevent staining from asphalt tracking, we recommend the use of a latex-based driveway sealer.
- Draw drapes and blinds during peak periods of strong sunlight. Flooring, like other home furnishing products, may discolor or fade when over-exposed to the sun.
- Heat-producing appliances such as a refrigerator or range, or hot air registers emitting a direct flow of heat in excess of 120° F, even intermittently, can scorch, burn, discolor or fade your floor. Cigarettes, matches and other very hot objects can also damage your floor.
- Avoid wearing stiletto or spiked heels on your floor. These types of heels can indent or damage many types of floors.

DO NOT USE STEAM CLEANERS on Congoleum Floors, they can permanently damage the floor.

REGULAR CARE

- Sweep or vacuum regularly to remove dirt and grit that can abrade, dull or scratch your floor. Do not use a vacuum with a beater brush, because it may damage the floor's surface.
- Wipe up spills promptly with a damp cloth or mop.
- For a more thorough cleaning, wash your floor with Bright 'N Easy No-Rinse Cleaner or other suitable, non-detergent based resilient floor cleaner.

CAUTION: Avoid one-step "mop and polish" products, dishwashing liquids and oil-based cleaners. These may leave a residue which can attract dirt and dull your floor's finish. Avoid cleaners that contain abrasives or solvents which may permanently damage your floor.

- Remove excess water after washing the floor.

INITIAL RESIDENTIAL MAINTENANCE

- If needed, after installation use lighter fluid applied with a clean cloth to remove scuff marks and adhesive residue. Keep traffic off treated area for 30 minutes.

CAUTION: Lighter fluid is a flammable solvent. Carefully read and follow cautionary information on label.

- Three days after installation wash the floor with Bright 'N Easy No-Rinse Cleaner or other suitable resilient floor cleaner.

HOW TO TREAT STAINS, SPILLS AND SCUFFS

Follow the remedies in order. Unless instructed otherwise, use a clean, white cloth or towel with the recommended liquids. Always rinse the affected area with clean water after treatment.

STAINS AND SPILLS	REMEDY
Acids, Alkalis Dye, Dye Markings, Iodine, Mercurochrome, Blood, Food, Candy, Rust†, Ketchup, Mustard, Fruit/Fruit Juices, Urine, Excrement, Cleaners, Strong Soaps, Grass, and Vomit	<ul style="list-style-type: none"> • Scrub area with Bright 'N Easy No-Rinse Cleaner full strength. • Rub the area with a 10 to 1 dilution of water to liquid bleach. • Rub the area with isopropyl alcohol*. † If rust stain does not respond, use lemon juice or a cream of tartar solution.
STAINS AND SPILLS	REMEDY
Dry Cleaning Fluids, Lacquer, Latex Paints, Nail Polish, Solvents, Oil-Based Paints, Wood Stains, and Varnish	<ul style="list-style-type: none"> • If substance is dry, gently peel it from the floor. (Avoid sharp instruments that could scratch the floor.) • Scrub area with Bright 'N Easy No-Rinse Cleaner. • Rub lightly with mineral spirits or paint thinner*.
SUBSTANCE THAT WON'T WIPE UP	REMEDY
Adhesives, Asphalt, Chewing Gum, Oil, Grease, Candle Wax, and Tar	<ul style="list-style-type: none"> • Carefully remove excess with a dull kitchen knife. • Scrub area with Bright 'N Easy No-Rinse Cleaner. • Rub lightly with mineral spirits, isopropyl alcohol* or lighter fluid*.
SCUFFS AND SMUDGES	REMEDY
Rubber Heel Marks, Scuffs, Shoe Polish, and Smudges	<ul style="list-style-type: none"> • Scrub area with Bright 'N Easy No-Rinse Cleaner. • Rub lightly with isopropyl alcohol* or lighter fluid*.
<p>* Caution: Isopropyl alcohol, lighter fluid, mineral spirits and paint thinner are flammable solvents. Carefully read and follow cautionary information on label. Keep traffic off treated area for 30 minutes.</p>	

This is an abbreviated warranty summary, please find complete specific warranties for each product on our website

www.congoleum.com/warranty-information

DURACERAMIC

RESIDENTIAL LIMITED WARRANTY

PRODUCTS	DuraCeramic Origins	DuraCeramic Dimensions
COVERAGE	WARRANTY PERIOD	
<ul style="list-style-type: none"> • will not wear through • will be free of manufacturing defects • will not stain • will not change gloss level • will not rip, tear, scratch, cut, chip or break 	LIFETIME	LIFETIME
ADDITIONAL SCOTCHGARD™ PROTECTOR LIMITED WARRANTY		
<ul style="list-style-type: none"> • will be easy to clean • will repel dirt and grime 	15 YEARS	15 YEARS
Labor coverage - 5 years if labor paid for when original floor was installed.		
LIGHT COMMERCIAL LIMITED WARRANTY		
COVERAGE	WARRANTY PERIOD	
<ul style="list-style-type: none"> • will be free of manufacturing defects • will not discolor from mold, mildew or alkali 	5 YEARS	5 YEARS
	5 YEARS	5 YEARS
Labor coverage - if labor paid for when original floor was installed: Year 1 – 100%, Years 2-3 – 50%, Year 4+ – No labor.		

INITIAL RESIDENTIAL MAINTENANCE

- Sweep or vacuum the floor to remove loose dirt.
- If needed, after installation use lighter fluid applied with a clean cloth to remove scuff marks and adhesive residue. Keep traffic off treated area for 30 minutes.

CAUTION: Lighter fluid is a flammable solvent. Carefully read and follow cautionary information on label.

CAUTION: Wash the floor with Bright 'N Easy No-Rinse Cleaner or other suitable resilient floor cleaner. Wash the floor with Bright 'N Easy No-Rinse Cleaner or other suitable resilient floor cleaner.

PREVENTATIVE CARE

- Make sure furniture legs have large surface, nonstaining floor protectors. Replace small, narrow metal or dome-shaped glides with smooth, flat glides, that are flat on the floor. Glides should be equipped with self-adhesive felt pads to avoid scratching the surface of the floor. The pads should be checked periodically for grit and wear and replaced when necessary.
- Heavy furniture or appliances should be equipped with flat, nonstaining composition furniture casters or cups of appropriate size - available square from 1 1/2" to 2 5/8" and round from 1 3/8" to 1 5/8".
- Moveable appliances and furniture should be equipped with easily swiveling casters. They should be at least 2" in diameter with nonstaining hard rubber treads with a minimum 3/4" flat surface width. Do not use ball-shaped casters.
- Place mats at outside entrances to prevent dirt, grit and soil from being tracked onto your floor. Use 100% latex-backed mats (labeled nonstaining), because some rubber-backed mats or carpets may permanently discolor your floor.
- To help prevent staining from asphalt tracking, we recommend the use of a latex-based driveway sealer.
- Draw drapes and blinds during peak periods of strong sunlight. Flooring, like other home furnishing products, may discolor or fade when over-exposed to the sun.
- Heat-producing appliances such as a refrigerator or range, or hot air registers emitting a direct flow of heat in excess of 120° F, even intermittently, can scorch, burn, discolor or fade your floor. Cigarettes, matches and other very hot objects can also damage your floor.
- Avoid wearing stiletto or spiked heels on your floor. These types

of heels can indent or damage many types of floors.

DO NOT USE STEAM CLEANERS on Congoleum Floors, they can permanently damage the floor.

REGULAR CARE

- Sweep or vacuum regularly to remove dirt and grit that can abrade, dull or scratch your floor. Do not use a vacuum with a beater brush, because it may damage the floor's surface.
- Wipe up spills promptly with a damp cloth or mop.
- For a more thorough cleaning, wash your floor with Bright 'N Easy No-Rinse Cleaner or other suitable, non-detergent based resilient floor cleaner.

CAUTION: Avoid one-step "mop and polish" products, dishwashing liquids and oil-based cleaners. These may leave a residue which can attract dirt and dull your floor's finish. Avoid cleaners that contain abrasives or solvents which may permanently damage your floor.

- Remove excess water after washing the floor.

HOW TO TREAT STAINS, SPILLS AND SCUFFS

Follow the remedies in order. Unless instructed otherwise, use a clean, white cloth or towel with the recommended liquids. Always rinse the affected area with clean water after treatment.

STAINS AND SPILLS	REMEDY
Acids, Alkalis Dye, Dye Markings, Iodine, Mercurochrome, Blood, Food, Candy, Rust†, Ketchup, Mustard, Fruit/Fruit Juices, Urine, Excrement, Cleaners, Strong Soaps, Grass, and Vomit	<ul style="list-style-type: none"> • Scrub area with Bright 'N Easy No-Rinse Cleaner full strength. • Rub the area with a 10 to 1 dilution of water to liquid bleach. • Rub the area with isopropyl alcohol*. † If rust stain does not respond, use lemon juice or a cream of tartar solution.
STAINS AND SPILLS	REMEDY
Dry Cleaning Fluids, Lacquer, Latex Paints, Nail Polish, Solvents, Oil-Based Paints, Wood Stains, and Varnish	<ul style="list-style-type: none"> • If substance is dry, gently peel it from the floor. (Avoid sharp instruments that could scratch the floor.) • Scrub area with Bright 'N Easy No-Rinse Cleaner. • Rub lightly with mineral spirits or paint thinner*.
SUBSTANCE THAT WON'T WIPE UP	REMEDY
Adhesives, Asphalt, Chewing Gum, Oil, Grease, Candle Wax, and Tar	<ul style="list-style-type: none"> • Carefully remove excess with a dull kitchen knife. • Scrub area with Bright 'N Easy No-Rinse Cleaner. • Rub lightly with mineral spirits, isopropyl alcohol* or lighter fluid*.
SCUFFS AND SMUDGES	REMEDY
Rubber Heel Marks, Scuffs, Shoe Polish, and Smudges	<ul style="list-style-type: none"> • Scrub area with Bright 'N Easy No-Rinse Cleaner. • Rub lightly with isopropyl alcohol* or lighter fluid*.
<p>* Caution: Isopropyl alcohol, lighter fluid, mineral spirits and paint thinner are flammable solvents. Carefully read and follow cautionary information on label. Keep traffic off treated area for 30 minutes.</p>	

This is an abbreviated warranty summary, please find complete specific warranties for each product on our website

www.congoleum.com/warranty-information

TRIVERSA PRIME

RESIDENTIAL LIMITED WARRANTY

PRODUCTS	Triversa Prime
COVERAGE	WARRANTY PERIOD
• will not wear through	5 YEARS
• will be free of manufacturing defects	5 YEARS
• will not stain	5 YEARS
• will not fade	5 YEARS
• will not rip or tear	5 YEARS
• will not permanently indent when proper floor protectors are used	5 YEARS
Labor coverage - 5 years if labor paid for when original floor was installed.	
COMMERCIAL LIMITED WARRANTY	
COVERAGE	WARRANTY PERIOD
• will be free of manufacturing defects 10 Years	5 YEARS
• will not discolor from mold, mildew or alkali	5 YEARS
Labor coverage - if labor paid for when original floor was installed: Year 1 – 100%, Years 2-3 – 50%, Year 4+ – No labor.	

AC PLANK / AC PLANK PRO

RESIDENTIAL LIMITED WARRANTY

PRODUCTS	AC Plank	AC Plank Pro
COVERAGE	WARRANTY PERIOD	
• will not wear through	LIFETIME	LIFETIME
• will be free of manufacturing defects	LIFETIME	LIFETIME
• will not stain	LIFETIME	LIFETIME
• will not fade	LIFETIME	LIFETIME
• will not rip or tear	LIFETIME	LIFETIME
• will not permanently indent when proper floor protectors are used	LIFETIME	LIFETIME
Labor coverage - 5 years if labor paid for when original floor was installed.		
COMMERCIAL LIMITED WARRANTY		
COVERAGE	WARRANTY PERIOD	
• will be free of manufacturing defects 10 Years	10 YEARS	10 YEARS
• will not discolor from mold, mildew or alkali	10 YEARS	10 YEARS
Labor coverage - if labor paid for when original floor was installed: Year 1 – 100%, Years 2-3 – 50%, Year 4+ – No labor.		

IMMEDIATELY AFTER INSTALLATION

- Ask your installer about the method used for installation. If “full spread”, keep traffic light during the first 24 hours so adhesive can dry properly.
- If the floor has been seamed, avoid stepping on the seam sealer for 24 hours so it can dry undisturbed.
- Avoid scrubbing or washing the floor for at least three days after installation. Spot clean the floor, avoiding all seams. Clean any adhesive residue with a clean, white cloth dampened with mineral spirits.*

CAUTION: *Mineral spirits are flammable liquids. Please follow precautions listed on the container.

PREVENTATIVE CARE

- Make sure furniture legs have large surface, nonstaining floor protectors. Replace small, narrow metal or dome-shaped glides with smooth, flat glides, that are flat on the floor. Glides should be equipped with self-adhesive felt pads to avoid scratching the surface of the floor. The pads should be checked periodically for grit and wear and replaced when necessary.
- Heavy furniture or appliances should be equipped with flat, nonstaining composition furniture casters or cups of appropriate size - available square from 1 1/2" to 2 5/8" and round from 1 3/8" to 1 5/8".
- Moveable appliances and furniture should be equipped with easily swiveling casters. They should be at least 2" in diameter with nonstaining hard rubber treads with a minimum 3/4" flat surface width. Do not use ball-shaped casters.
- Place mats at outside entrances to prevent dirt, grit and soil from being tracked onto your floor. Use 100% latex-backed mats (labeled nonstaining), because some rubber-backed mats or carpets may permanently discolor your floor.
- To help prevent staining from asphalt tracking, we recommend the use of a latex-based driveway sealer.
- Draw drapes and blinds during peak periods of strong sunlight. Flooring, like other home furnishing products, may discolor or fade when over-exposed to the sun.
- Heat-producing appliances such as a refrigerator or range, or hot air registers emitting a direct flow of heat in excess of 120° F, even intermittently, can scorch, burn, discolor or fade your floor. Cigarettes, matches and other very hot objects can also damage your floor.

- Avoid wearing stiletto or spiked heels on your floor. These types of heels can indent or damage many types of floors.

DO NOT USE STEAM CLEANERS on Congoleum Floors, they can permanently damage the floor.

REGULAR CARE

- Sweep or vacuum regularly to remove dirt and grit that can abrade, dull or scratch your floor. Do not use a vacuum with a beater brush, because it may damage the floor's surface.
- Wipe up spills promptly with a damp cloth or mop.
- For a more thorough cleaning, wash your floor with Bright 'N Easy No-Rinse Cleaner or other suitable, non-detergent based resilient floor cleaner.

CAUTION: Avoid one-step “mop and polish” products, dishwashing liquids and oil-based cleaners. These may leave a residue which can attract dirt and dull your floor's finish. Avoid cleaners that contain abrasives or solvents which may permanently damage your floor.

- Remove excess water after washing the floor.

INITIAL RESIDENTIAL MAINTENANCE

- Sweep or vacuum the floor to remove loose dirt.
- If needed, after installation use lighter fluid applied with a clean cloth to remove scuff marks and adhesive residue. Keep traffic off treated area for 30 minutes.

CAUTION: Lighter fluid is a flammable solvent. Carefully read and follow cautionary information on label.

CAUTION: Wash the floor with Bright 'N Easy No-Rinse Cleaner or other suitable resilient floor cleaner.

HOW TO TREAT STAINS, SPILLS AND SCUFFS

Follow the remedies in order. Unless instructed otherwise, use a clean, white cloth or towel with the recommended liquids. Always rinse the affected area with clean water after treatment.

STAINS AND SPILLS	REMEDY
Acids, Alkalis Dye, Dye Markings, Iodine, Mercurochrome, Blood, Food, Candy, Rust†, Ketchup, Mustard, Fruit/Fruit Juices, Urine, Excrement, Cleaners, Strong Soaps, Grass, and Vomit	<ul style="list-style-type: none"> • Scrub area with Bright 'N Easy No-Rinse Cleaner full strength. • Rub the area with a 10 to 1 dilution of water to liquid bleach. • Rub the area with isopropyl alcohol*. † If rust stain does not respond, use lemon juice or a cream of tartar solution.
STAINS AND SPILLS	REMEDY
Dry Cleaning Fluids, Lacquer, Latex Paints, Nail Polish, Solvents, Oil-Based Paints, Wood Stains, and Varnish	<ul style="list-style-type: none"> • If substance is dry, gently peel it from the floor. (Avoid sharp instruments that could scratch the floor.) • Scrub area with Bright 'N Easy No-Rinse Cleaner. • Rub lightly with mineral spirits or paint thinner*.
SUBSTANCE THAT WON'T WIPE UP	REMEDY
Adhesives, Asphalt, Chewing Gum, Oil, Grease, Candle Wax, and Tar	<ul style="list-style-type: none"> • Carefully remove excess with a dull kitchen knife. • Scrub area with Bright 'N Easy No-Rinse Cleaner. • Rub lightly with mineral spirits, isopropyl alcohol* or lighter fluid*.
SCUFFS AND SMUDGES	REMEDY
Rubber Heel Marks, Scuffs, Shoe Polish, and Smudges	<ul style="list-style-type: none"> • Scrub area with Bright 'N Easy No-Rinse Cleaner. • Rub lightly with isopropyl alcohol* or lighter fluid*.
<p>* Caution: Isopropyl alcohol, lighter fluid, mineral spirits and paint thinner are flammable solvents. Carefully read and follow cautionary information on label. Keep traffic off treated area for 30 minutes.</p>	

This is an abbreviated warranty summary, please find complete specific warranties for each product on our website

www.congoleum.com/warranty-information

VINYL COMPOSITION TILE

RESIDENTIAL LIMITED WARRANTY

PRODUCTS	Alternatives
COVERAGE	WARRANTY PERIOD
• will not wear through	10 YEARS
• will be free of manufacturing defects	10 YEARS
• will not discolor from mold, mildew or alkali	5 YEARS
Labor coverage - 5 years if labor paid for when original floor was installed.	
COMMERCIAL LIMITED WARRANTY	
COVERAGE	WARRANTY PERIOD
• will be free of manufacturing defects	5 YEARS
• will not discolor from mold, mildew or alkali	5 YEARS
Labor coverage - if labor paid for when original floor was installed: Year 1 – 100%, Years 2-3 – 50%, Year 4+ – No labor.	