



DETAIL K2 INC.

DK2 POWER USA
4301 S Valley View Blvd STE 10-11
Las Vegas, NV 89103
1-702-331-5353

DETAIL K2, INC.
1080 Clay Avenue Unit 2
Burlington, Ontario, Canada L7L0A1

DK2 USA EAST
6245 Industrial Parkway
Whitehouse, OH 43571

PARTS AND SERVICE 702-331-5353 OR WWW.DK2POWER.COM CONTACT US

LEAF VAC CHIPPER SHREDDER

LEAF VAC
3 IN CHIPPER
SHREDDER



OPC503V 3 INCH LEAF VAC CHIPPER SHREDDER

STEP 1:

Open and unpack all items. Leave lots of working space.
Inspect all parts.
The CHIPPER is shipped in a crate. Remove all sides before
you begin.



NOTE: UPON INSPECTION OF PARTS IF YOU FIND ANY DAMAGE OR MISSING PARTS PLEASE CALL DK2 POWER AT **702-331-5353** OR CONTACT US VIA OUR WEBSITE WWW.DK2POWER.COM
WE WILL REPLACE ANY MISSING PARTS TO YOU FREE

PLEASE DO NOT RETURN TO THE STORE

STEP 2:

1. INSTALL THE HANDLE
2. Use 4 bolts and hardware provided



Install hardware and tighten

STEP 3:

1. INSTALL THE CHIP CHUTE
2. Install using the 5 bolts and hardware included



STEP 4:

1. INSTALL THE TREE FEED CHUTE
2. Remove the 4 nuts and hardware
3. Be cautious NOT TO DROP them into the cutting chamber.
4. Install chute and tighten

4 NUTS AND WASHERS



STEP 5:

1. INSTALL THE LEAF VAC HOSE
2. Remove the 3 nuts and hardware and the cover plate.
3. Keep the plate in case you will remove the hose in the future.
4. Install the hose plate and shown, replace the nuts and tighten.



STEP 6

1. LEAF VAC HOSE STORAGE
2. Wrap the hose OVER the chip chute as shown
3. Wrap the hose across the front of the hopper
4. Place the HOSE HANDLE across the push bar as shown and UNDER THE HOSE.
5. Let engine cool before you wrap your hose into storage position. Take care NOT to melt it on the muffler.



STEP 7

1. INSTALL THE TOW BAR TROLLEY COMBO
2. Remove the pin, insert the tow bar with wheel down, re-pin.

Install tow bar



Wheel in down position to trolley mode



1. TOW BAR TROLLEY COMBO
2. Shown is trolley mode
3. Remove Tow Bar and flip over for TOWING position.
4. When tow bar is removed, to increase your work area when chipping, use the drop stand.

Wheel down for easy transport

Flip bar over for towing

Drop stand when tow bar is removed to increase work area



1. DROP STAND
2. Drop stand is up when trolley wheel is down.
3. Drop stand is up when tow bar is reversed for towing.



1. WHEEL LOCK FEATURE
2. **REMEMBER TO RAISE YOUR DROP STAND AND TO UNLOCK YOUR WHEELS BEFORE TOWING**
3. Wheel shown is in free wheeling position
4. Remove pin, slide wheel forward, re-pin wheel and axel together to keep wheel from rolling and LOCK.
5. BOTH WHEELS LOCK TO HOLD YOUR CHIPPER IN PLACE FROM ROLLING WHEN YOU ARE WORKING.

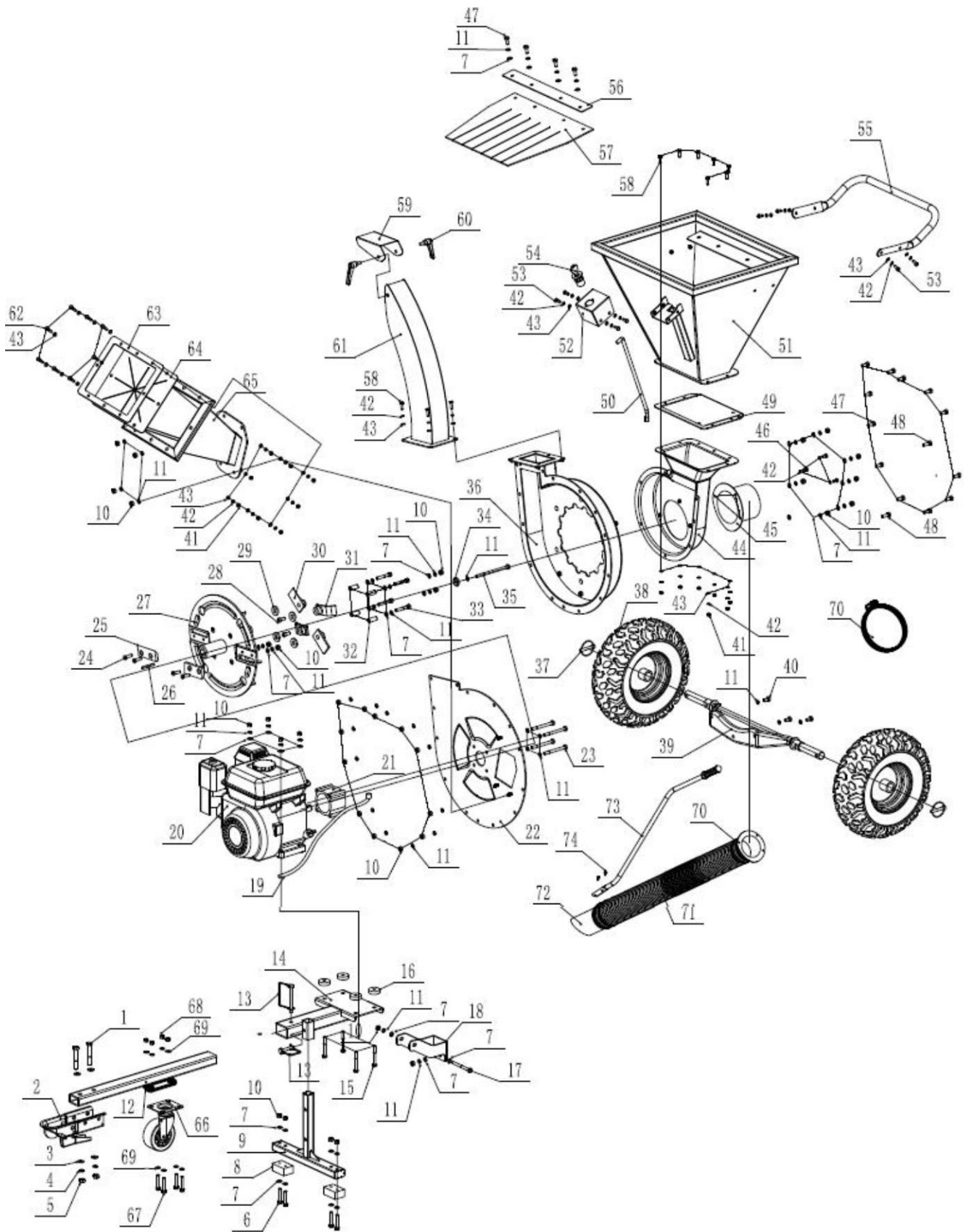


1. ENGINE
2. Change oil after first 5 hours of use on brand new engine
3. Fill oil full, your engine has a low oil shutoff and will not start if low on oil. This is a protection system for your engine.
4. See Engine manual for complete instructions.
5. TURN KEY ON
6. CHOKE IF NEEDED
7. TURN ON GAS- SLIDE LEVER ALL THE WAY TO THE RIGHT
8. PULL AND START



1. SAFETY KIT AND TOOLS
2. The white bottle is used for oil fill
3. Work gloves, safety glasses, ear protection included.
4. A 1 7/8 tow ball is included
5. Manuals and assembly tools.
6. Storage tool bag





No.	Specification	No.2	Specification3
1	M10*70 bolt	41	M6locknut
2	hitch trailer	42	spring washerø6
3	washerø10.5*ø22*2	43	washerø6.4*ø12*1.6
4	spring washerø10	44	side chipper room
5	M10locknut	45	side chipper room cover
6	M8*45 bolt	46	M6*12 bolt
7	washerø8.4*ø20*1.6	47	M8*20 bolt
8	Rubber pad	48	M8*25 bolt
9	support feet	49	rubber pad
10	M8locknut	50	swtich key wire
11	spring washerø8	51	top feed hopper
12	tow bar	52	swtich stop cover
13	latchø8	53	M6*16 bolt
14	engine plate	54	switch key
15	M8*60 bolt	55	handle
16	Rubber padø10	56	plate for protection sheet
17	M8*85 bolt	57	protection sheet
18	U-protection plate	58	M6*20 bolt
19	engine wire	59	outlet hopper adjusting plate
20	engine	60	knob
21	protection pipe	61	outlet hopper
22	main chipper room cover	62	M6*35 bolt
23	5/16-24UNF*85 bolt	63	side plate for protection sheet
24	M8*25bolt	64	side protection sheet
25	blade	65	side feed hopper
26	key	66	trolley wheel
27	blade roller	67	M10*50 bolt
28	M8*20 bolt	68	M10locknut
29	washerø30*ø13*4	69	spring washerø10
30	straight hammer	70	Hose Clamp
31	L-hammer	71	hose
32	Straight sleeve	72	hose cover
33	M8*50bolt	73	hose handle
34	gland	74	M6*50 bolt
35	5/16-24UNF*135 bolt		
36	main chipper room		
37	O-latchø8		
38	tire		
39	axle		
40	M8*16 bolt		

READ THE KOHLER ENGINE MANUAL SUPPLIED WITH YOUR UNIT FOR FULL ENGINE OPERATION, SAFETY, AND MAINTENANCE.



YOUR UNIT HAS A COMMERCIAL KOHLER ENGINE WITH A 3YR PARTS AND SERVICE WARRANTY. FOR WARRANTY IN YOUR AREA CONTACT THE NEAREST KOHLER DEALER.

VISIT WWW.KOHLERENGINES.COM FOR PARTS, SERVICE, MANUALS, AND DEALER LOCATIONS.

OPERATION – BEFORE TURNING KEY AND PULL STARTING ENGINE

CLEAR AREA OF ALL PEOPLE AND PROPERTY THAT COULD BE DAMAGED. THINK SAFETY. CHIPS ARE FLYING PROJECTILES AND CAN CAUSE INJURY.

WEAR SAFETY GLASSES, HEARING PROTECTION, AND GLOVES

DO NOT WEAR LOOSE FITTING CLOTHES THAT COULD GET STUCK IN THE MACHINE MOVING PARTS, ONLY CHIP WOOD, CHILDREN SHOULD NOT RUN THIS EQUIPMENT, STAY ALERT OF YOUR SURROUNDING AND PERSONS THAT COULD APPEAR IN THE CHIP PATH WHILE YOU ARE WORKING.

UNIT IS DIRECT DRIVE. NO CLUTCH TO SLIP OR BURN UP.

Before starting make sure all chutes are clear of branches as the cutting wheel will turn as you pull the recoil starter. Cutter wheel must be free to turn when starting.

PERFORMANCE OPERATION -

Feed larger trees upto 3 inches in diameter slowly into the tubular feed chute allowing the cutter wheel to regain speed. Shoving a tree into the cutter wheel will stall the machine and damage the cutters or drive shaft.

Feed small twigs, leaves, and small branches upto 3/8 inch dia into the top hopper. Wear gloves, as the cutter will grab the branches and pull them into the machine and from your hands. NEVER PLACE HANDS INTO THE TOP FEEDER.

To clear the top feeder turn the key off, remove it, unplug the spark plug.

Be safe, the cutters on this machine are high speed and very sharp.

SET BOTH OF YOUR WHEEL BRAKE PINS to STABILIZE MACHINE DURING OPERATION.
READ AND OBEY ALL WARNING LABELS ON THIS MACHINE.



PLEASE DO NOT RETURN TO THE STORE

YOU HAVE A 1 YEAR WARRANTY AND DK2 WILL REPLACE A DEFECTIVE PART FOR FREE

CALL US AT 702-331-5353 FOR FAST WARRANTY PARTS AND QUESTIONS

WHAT IS COVERED

DK2 Inc. warrants to the original purchaser of any DK2 product that it will be free and clear of manufacturing defects in workmanship and materials under normal use and service for a period of one (1) year from the date of the original purchase.

If within one (1) year from the original date of purchase this product fails due to defect in material or workmanship. DK2 POWER outdoor power equipment is 1-year parts only warranty no labor.

Upon expiry of one (1) year, Detail K2 will have no further liability related to the product. Detail K2 does not authorize any party, including its authorized distributors or dealers, to offer any other warranty on behalf of Detail K2 Inc.

KOHLER ENGINES – KOHLER CH SERIES ENGINES COMMERCIAL 3 YR PARTS AND LABOR WARRANTY
see your Kohler manual for specific warranty.

DIESEL TRACTORS – Chassis component parts only, no labor, ENGINES – 1 YR KOHLER WARRANTY

DK2 POWER OUTDOOR EQUIPMENT – 1-Year parts only, no labor.

THIS WARRANTY DOES NOT COVER OR APPLY TO:

Damage to the product due to misuse, mishandling and abuse

(b) Improper installation, maintenance and storage

(c) Expendable parts such as nuts and bolts, pins and springs, wiring and switch components, hydraulic hoses and fittings, cutting teeth, cutting chains, cutting blades, throttles, belts and tires.

(d) Normal wear and tear

(e) Consequential damage & incidental damages such as damage to persons or property

PROCEDURE FOR OBTAINING AN RETURN AUTHORIZATION

Within the one (1) year warranty period, the purchaser of the product must notify DK2 of the claimed defect and provide proof of original purchase. At this time the validity of the claim will be determined, and if approved replacement parts will be issued.

No returned product will be accepted under warranty unless accompanied by an RGA# issued by Detail K2 Inc.

RESOLUTION FOR A DEFECTIVE PRODUCT

DK2 POWER – Tractors, Chippers, Stump Grinders, Log Splitters, and Outdoor Power Equipment.

Call DK2 at **702-331-5353** in Las Vegas between 8am-4pm M-F Pacific Time.