

EFFECTIVE:  
22-APR-15

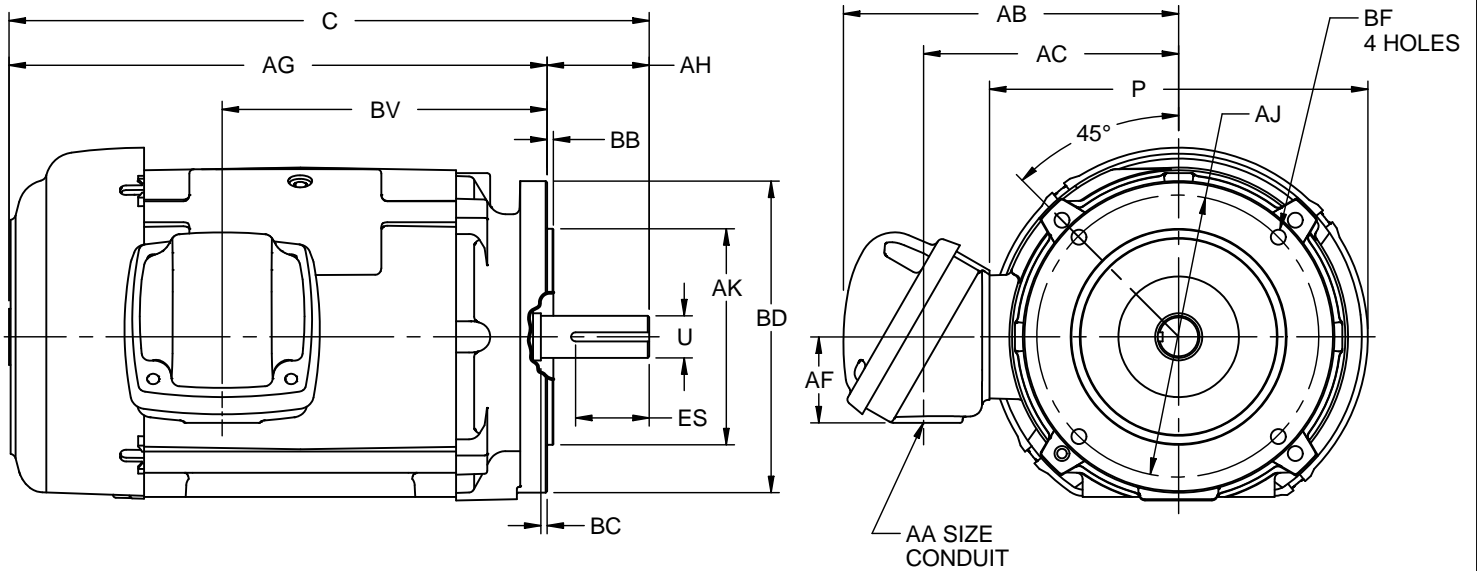
# DIMENSION PRINT WITH NEMA "C" BRACKET

PRINT:  
07-2861

SUPERSEDES:  
19-MAY-11

FRAME: 143-145 TC  
BASIC TYPE: LF

SHEET:  
1 OF 1



ALL DIMENSIONS ARE IN INCHES AND MILLIMETERS

UNITS	C	P <sup>2</sup>	U -.0005	AA	AB	AC	AF	AG	AH	AJ	AK -.003
IN	13.34	8.00	.8750	3/4 NPT	7.00	5.32	1.81	11.22	2.13	5.875	4.500
mm	339	203	22.225		178	135	46	285	54	149.23	114.30

UNITS	BB MIN	BC	BD MAX	BF <sup>3</sup>	BV	ES MIN	SQ KEY
IN	.13	.13	6.50	3/8-16 x .56	6.78	1.38	.188
mm	3	3	165		172	35	4.78

1: ALL ROUGH CASTING DIMENSIONS MAY VARY BY .25" DUE TO CASTING AND/OR FABRICATION VARIATIONS.

2: LARGEST MOTOR WIDTH.

3: TAP SIZE AND BOLT PENETRATION ALLOWANCE.

4: CONDUIT BOX MAY BE LOCATED ON EITHER SIDE OF MOTOR. CONDUIT OPENINGS MAY BE LOCATED IN STEPS OF 90 DEGREES REGARDLESS OF LOCATION. STANDARD AS SHOWN WITH CONDUIT OPENING DOWN.

5: TOLERANCES SHOWN ARE IN INCHES ONLY.

6: ALL TAPPED HOLES ARE UNIFIED NATIONAL COARSE, RIGHT HAND THREAD.

TOLERANCES	
FACE RUNOUT	.004 T.I.R.
PERMISSIBLE ECCENTRICITY OF MOUNTING RABBET	.004 T.I.R.
PERMISSIBLE SHAFT RUNOUT	.002 T.I.R.

07-2861/B

**Nidec Motor Corporation**  
St. Louis, Missouri

INFORMATION DISCLOSED ON THIS DOCUMENT IS CONSIDERED PROPRIETARY AND SHALL NOT BE REPRODUCED OR DISCLOSED WITHOUT WRITTEN CONSENT OF NIDEC MOTOR CORPORATION



ISSUED BY  
**R. KING**  
APPROVED BY  
**J. O'BRIEN**

IHP\_DP\_NMCA (MAR-2011) SOLIDEDGE