

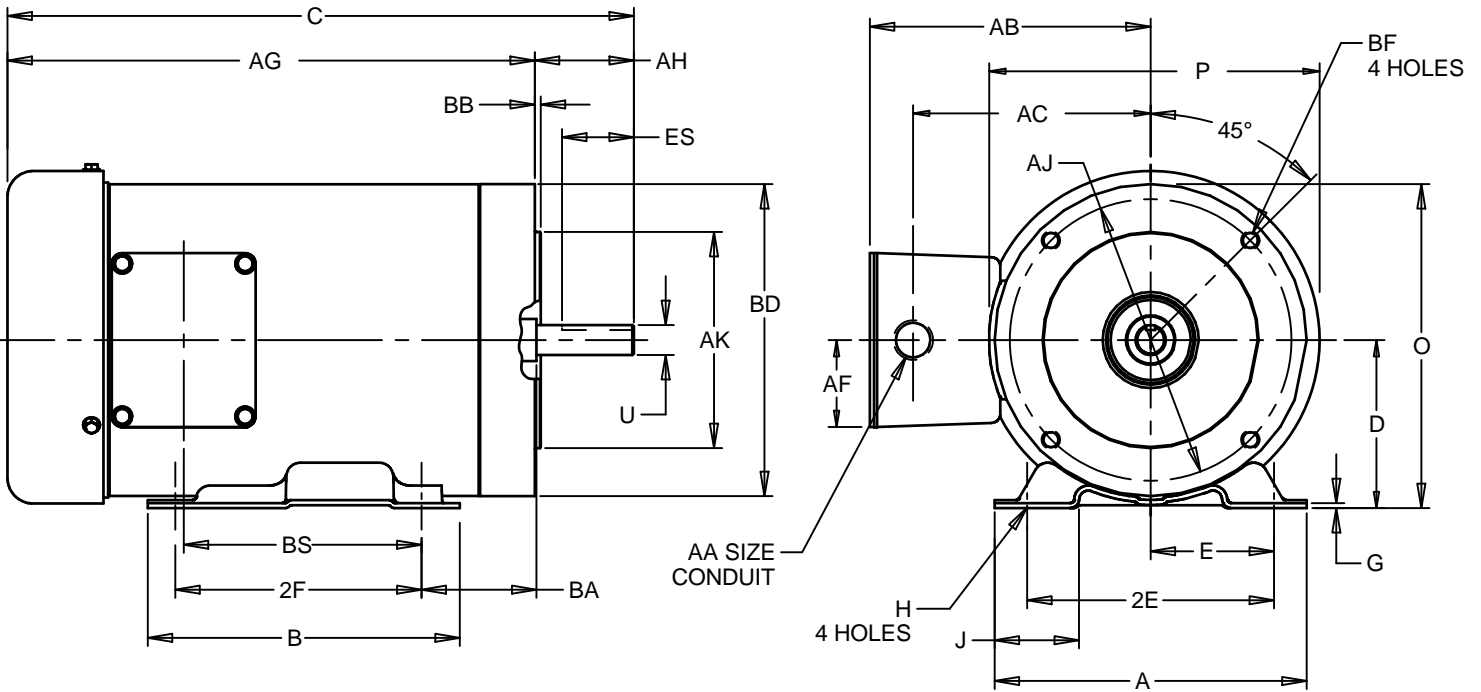
EFFECTIVE:  
23-JUL-14

SUPERSEDES:  
19-MAY-11

**DIMENSION PRINT**  
TEFC, STAINLESS STEEL FRAME, FOOTED  
FRAME: 143TC, 145TC  
BASIC TYPE: FSS, SSE

PRINT:  
07-2490

SHEET:  
1 OF 1



ALL DIMENSIONS ARE IN INCHES AND MILLIMETERS

UNITS	A	B	C	D	E	2E	G	H	J	O	P <sup>2</sup>	U	AA	AB
IN	6.50	6.50	13.19	3.50	2.75	5.50	.13	.34	1.75	6.75	7.06	.8750	1/2 NPT	6.00
mm	165	165	335	89	70	140	3	9	44	171	179	22.225		152

UNITS	AC	AF	AG	AH	AJ	AK	BA	BB	BD	BF <sup>3</sup>	BS	ES	SQ	KEY
IN	4.94	1.81	11.03	2.13	5.875	4.500	2.75	.13	6.500	3/8-16 X .75	4.75	1.41	.188	
mm	125	46	280	54	149.23	114.30	70	3	165.10		121	36	4.78	

FRAME	UNITS	2F
143	IN	4.00
	mm	102
145	IN	5.00
	mm	127

- 1: ALL ROUGH DIMENSIONS MAY VARY .25" DUE TO CASTING AND/OR FABRICATION VARIATIONS.
- 2: LARGEST MOTOR WIDTH.
- 3: TAP SIZE AND BOLT PENETRATION ALLOWANCE.
- 4: ALL TAPPED HOLES ARE UNIFIED NATIONAL COARSE, RIGHT HAND THREAD.
- 5: TOLERANCES ARE ALL IN INCHES.
- 6: FRAME REFERENCE: 7.750"/56/143/145.

TOLERANCES	
FACE RUNOUT	.004 T.I.R.
PERMISSIBLE ECCENTRICITY OF MOUNTING RABBET	.004 T.I.R.
PERMISSIBLE SHAFT RUNOUT	.002 T.I.R.

07-2490/C

**Nidec Motor Corporation**  
St. Louis, Missouri

INFORMATION DISCLOSED ON THIS DOCUMENT IS CONSIDERED PROPRIETARY AND SHALL NOT BE REPRODUCED OR DISCLOSED WITHOUT WRITTEN CONSENT OF NIDEC MOTOR CORPORATION



ISSUED BY  
**R. KING**  
APPROVED BY  
**M. CULLEN**

IHP\_DP\_NMCA (MAR-2011) SOLIDEDGE