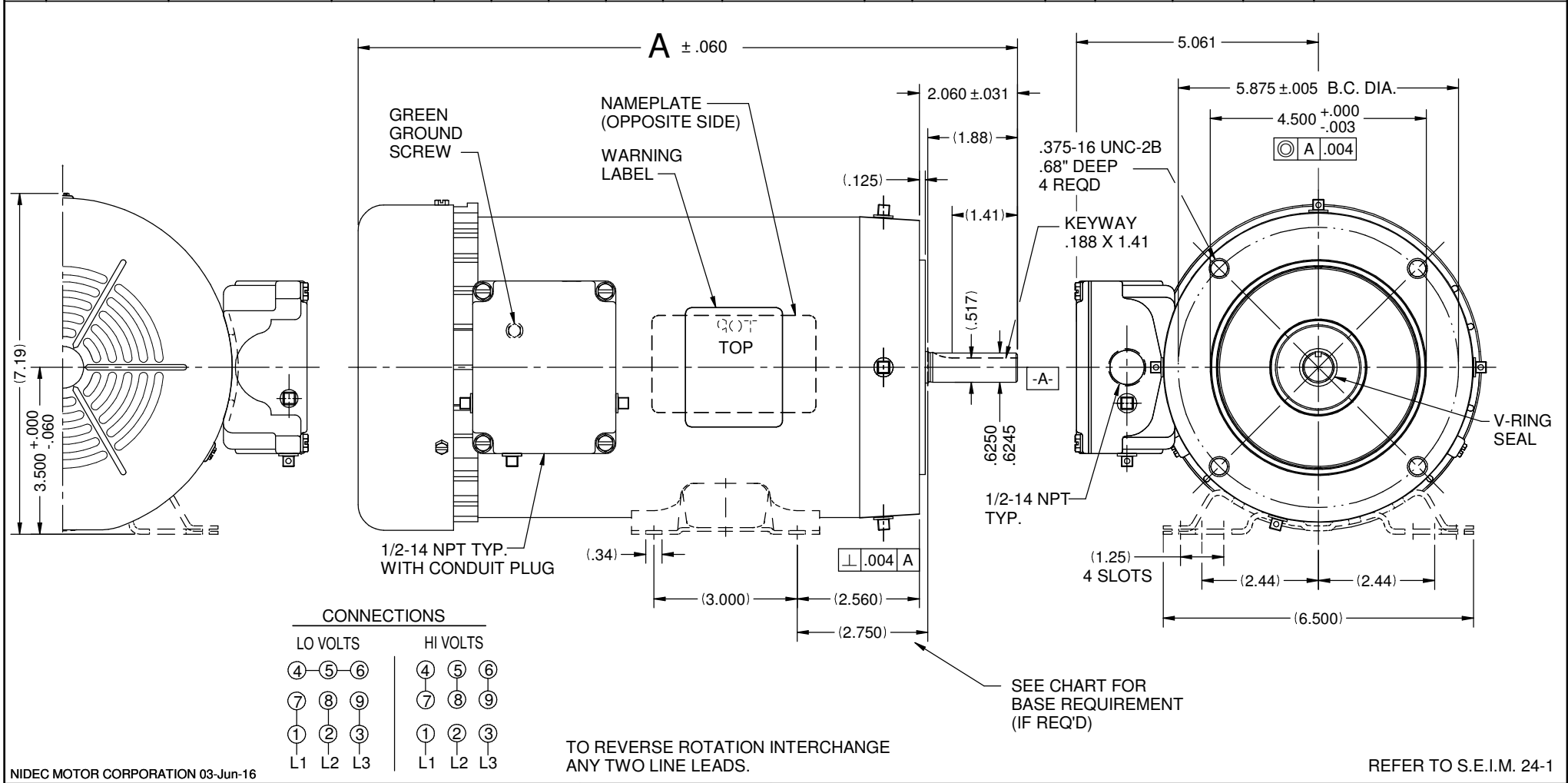


VAR	MODEL	CUSTOMER	CATALOG NO.	A	B	C	D	HP	VOLTS	SF	AMPS	HZ	RPM	PROTECTOR	BASE REQUIREMENT	DESCRIPTION / REMARKS
001	P63AMZ-1438	USEM	WD2P2ACR	14.85	-----	-----	-----	2.0	208-230/460	1.0	6.2-6.0/3.0	60	1725	NONE	NONE	N56C, TEFC
002	P63GCL-1485	USEM	WD2P1ACR	13.85	-----	-----	-----	2.0	208-230/460	1.15	5.1-5.1/2.6	60	3450	NONE	NONE	N56C, TEFC
003	P63GCY-1494	USEM	WD3P1ACR	14.35	-----	-----	-----	3.0	208-230/460	1.15	7.9-6.7/3.4	60	3450	NONE	NONE	N56C, TEFC



NIDEC MOTOR CORPORATION 03-Jun-16		REVISION RECORD FOR: ECO E26000		DIMENSIONS ARE FOR REFERENCE ONLY		NIDEC MOTOR CORPORATION						
SEAM WELD LOCATION CHANGED FROM PAGE 1 & 2 TO PAGE 3 & 4.				UNLESS TOLERANCE IS SPECIFIED		INFORMATION DISCLOSED ON THIS DOCUMENT IS CONSIDERED PROPRIETARY AND SHALL NOT BE REPRODUCED OR DISCLOSED WITHOUT WRITTEN CONSENT OF NIDEC MOTOR CORPORATION						
ISSUED BY: E. REYES		ENGINEER APPROVED: T. BOSSALLER				TITLE: CUSTOMER DETAIL DRAWING		CODE: V02	ITEM NO.: 809269	REV: B	SHEET NUMBER: 1 OF 5	DWG SIZE: B
										REVISION DATE: 03-JUN-16		