

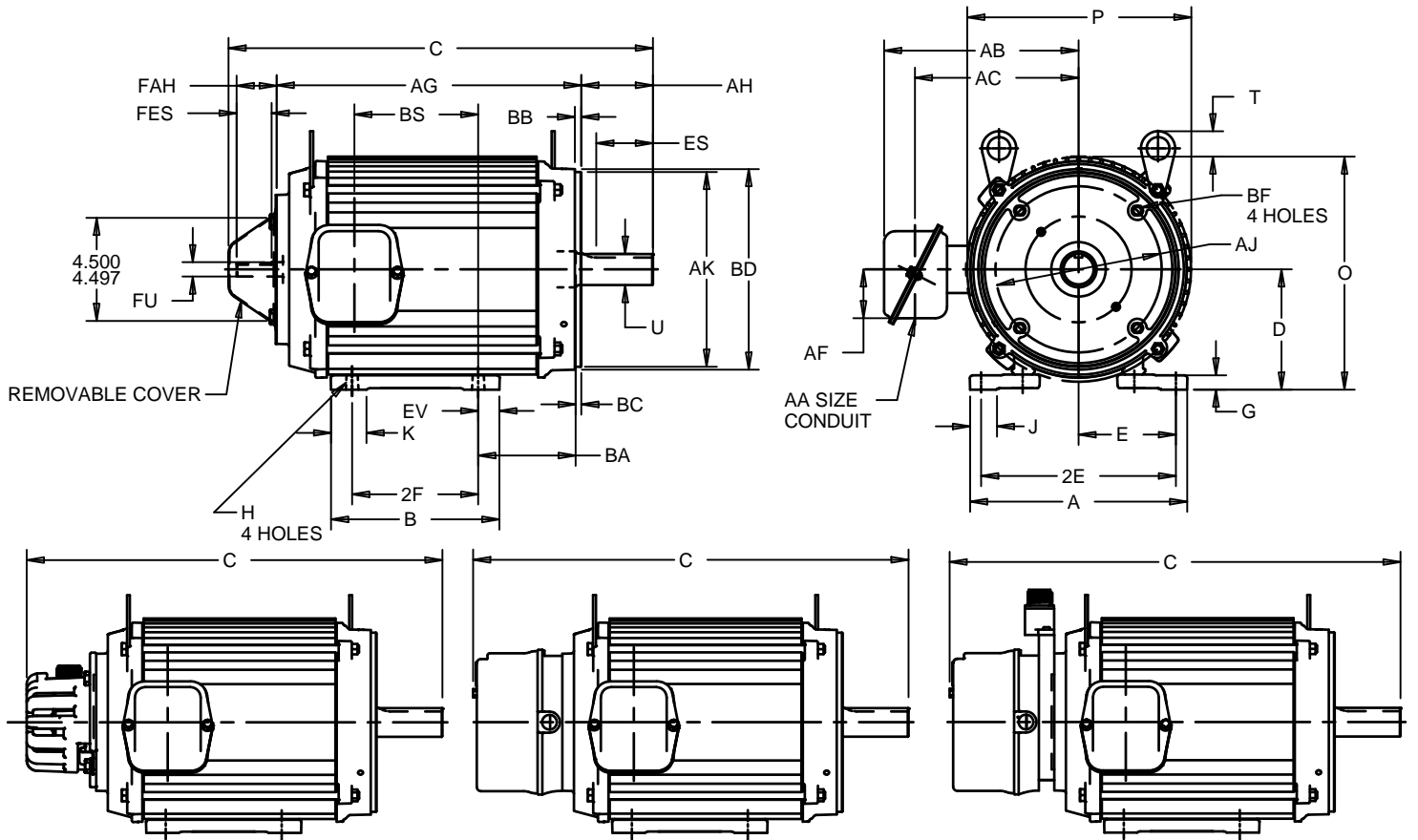
EFFECTIVE:  
**16-OCT-13**

**DIMENSION PRINT**  
UNIMOUNT VECTOR DUTY  
FRAME: 213TC, 215TC  
BASIC TYPE: UTXN

PRINT:  
**07-2754**

SUPERSEDES:  
**02-JUN-09**

SHEET:  
**1 OF 1**



DYNAPAR ENCODER KIT ADD 1.20" TO THE 'C' DIMENSION  
EPC ENCODER KIT ADD 0.76" TO THE 'C' DIMENSION

BRAKE ADD 2.13" TO THE 'C' DIMENSION

BRAKE WITH SL56 ADD 2.87" TO THE 'C' DIMENSION  
BRAKE WITH 770 ADD 3.11" TO THE 'C' DIMENSION

ALL DIMENSIONS ARE IN INCHES AND MILLIMETERS

UNITS	A	D -.06	E	2E ±.03	G	H +.05	J	K	O	P <sup>2</sup>
IN	9.50	5.25	4.25	8.50	.63	.41	1.16	1.56	10.21	9.72
MM	241	133	108	216	16	11	29	40	259	247

UNITS	T	U -.0005	AA	AB	AC	AF	AH	AJ	AK -.003	BA
IN	1.07	1.375	1.38	8.52	7.21	2.13	3.12	7.250	8.500	4.25
MM	27	34.925	35	216	183	54	79	184.15	215.90	108

UNITS	BB MIN	BC	BD MAX	BF <sup>4</sup>	ES MIN	EV	FAH	FES	FU -.0005	SE SQ KEY	PE SQ KEY
IN	.25	.25	8.75	1/2-13 X .81	2.41	.94	1.75	1.50	.6250	.188	.312
MM	6	6	222		61	24	44	38	15.875	4.78	7.92

FRAME	HP	UNITS	C	AG	BS	2F ±.03	B
213TC	7.5	IN	20.02	14.80	6.94	5.50	7.38
		MM	509	376	176	140	187
	3	IN	18.52	13.30	5.40	5.50	7.38
		MM	370	338	137	140	187
215TC	10	IN	23.02	17.80	9.94	7.00	8.88
		MM	585	452	250	178	224
	5	IN	20.02	14.80	6.94	7.00	8.88
		MM	509	376	176	178	224

TOLERANCES	
FACE RUNOUT	.004 T.I.R.
PERMISSIBLE ECCENTRICITY OF MOUNTING RABBET	.004 T.I.R.
PERMISSIBLE SHAFT RUNOUT	.002 T.I.R.

- ALL ROUGH DIMENSIONS MAY VARY BY .25" DUE TO CASTING AND/OR FABRICATION VARIATIONS.
- LARGEST MOTOR WIDTH.
- CONDUIT OPENINGS MAY BE LOCATED IN STEPS OF 90 DEGREES REGARDLESS OF LOCATION. STANDARD AS SHOWN WITH CONDUIT OPENING DOWN.
- TAP SIZE AND BOLT PENETRATION ALLOWANCE.
- ALL TAPPED HOLES ARE UNIFIED NATIONAL COARSE, RIGHT HAND THREAD.
- TOLERANCES SHOWN ARE IN INCHES ONLY.
- FRAME REFERENCE: 8.250/182/9.000/184

07-2754/B

**Nidec Motor Corporation**  
St. Louis, Missouri

INFORMATION DISCLOSED ON THIS DOCUMENT IS CONSIDERED PROPRIETARY AND SHALL NOT BE REPRODUCED OR DISCLOSED WITHOUT WRITTEN CONSENT OF NIDEC MOTOR CORPORATION



ISSUED BY  
**R. KING**  
APPROVED BY  
**J. O'BRIEN**

IHP\_DP\_NMCA (MAR-2011) SOLIDEDGE