

EFFECTIVE:
08-FEB-12

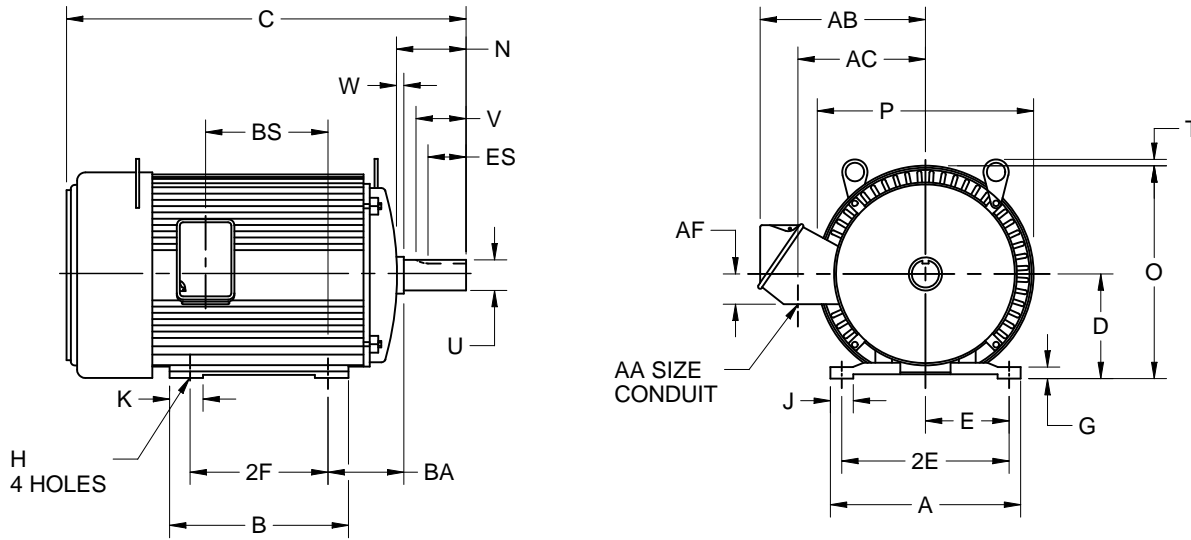
SUPERSEDES:
21-AUG-98

HORIZONTAL MOTORS

TEFC - WORLD MOTOR
FRAME: 182T - A286TS
BASIC TYPE: FUT

PRINT:
07-1989

SHEET:
1 OF 2



ALL DIMENSIONS ARE IN INCHES

FRAME	A	D -.06	E	2E ±.03	G	H +.05	J	K	O	P ²	T	W
180T	8.38	4.50	3.75	7.50	.38	.41	.88	1.88	9.28	9.56	.38	.13
210T	9.50	5.25	4.25	8.50	.63	.44	1.16	1.56	10.88	11.25	.38	.13
250T	11.38	6.25	5.00	10.00	.69	.53	1.38	2.00	12.94	13.38	0.00	.13
A280T, TS	12.88	7.00	5.50	11.00	.75	.53	1.88	2.63	13.69	13.38	0.00	.13

FRAME	AA	AB	AC	AF	BA
180T	.75	7.50	6.31	2.13	2.75
210T	1.00	8.25	6.38	1.56	3.50
250T	1.25	9.94	7.63	1.81	4.25
A280T, TS	1.50	10.81	8.25	2.13	4.75

FRAME	B	C	2F ±.03	N	U -.0005	V MIN	BS	ES MIN	SQ KEY
182T	6.38	16.13	4.50	2.88	1.1250	2.56	5.53	1.78	.250
184T	6.38	16.88	5.50	2.88	1.1250	2.56	6.28	1.78	.250
213T	7.38	18.63	5.50	3.50	1.3750	3.13	5.13	2.41	.313
215T	8.88	20.13	7.00	3.50	1.3750	3.09	6.63	2.41	.313
254T	10.69	23.88	8.25	4.13	1.6250	3.75	7.38	2.91	.375
256T	12.44	25.63	10.00	4.13	1.6250	3.75	9.13	2.91	.375
A284T	12.25	28.25	9.50	4.75	1.8750	4.41	10.63	3.28	.500
A284TS	12.25	26.88	9.50	3.38	1.6250	3.03	10.63	1.91	.375
A286T	13.75	28.25	11.00	4.75	1.8750	3.41	10.63	3.28	.500
A286TS	13.75	26.88	11.00	3.38	1.6250	3.03	10.63	1.91	.375

1. ALL ROUGH CASTING DIMENSIONS MAY VARY BY .25" DUE TO CASTING AND/OR FABRICATION VARIATIONS.
2. LARGEST MOTOR WIDTH.

3. CONDUIT BOX MAY BE LOCATED ON EITHER SIDE OF MOTOR. CONDUIT OPENINGS MAY BE LOCATED IN STEPS OF 90 DEGREES REGARDLESS OF LOCATION. STANDARD AS SHOWN WITH CONDUIT OPENING DOWN.

07-1989/A

Nidec Motor Corporation
St. Louis, Missouri

INFORMATION DISCLOSED ON THIS DOCUMENT IS CONSIDERED PROPRIETARY AND SHALL NOT BE REPRODUCED OR DISCLOSED WITHOUT WRITTEN CONSENT OF NIDEC MOTOR CORPORATION



ISSUED BY
D. MENDEZ
APPROVED BY
J. AGUILAR

IHP_DP_NMCA (MAR-2011) SOLIDEDGE

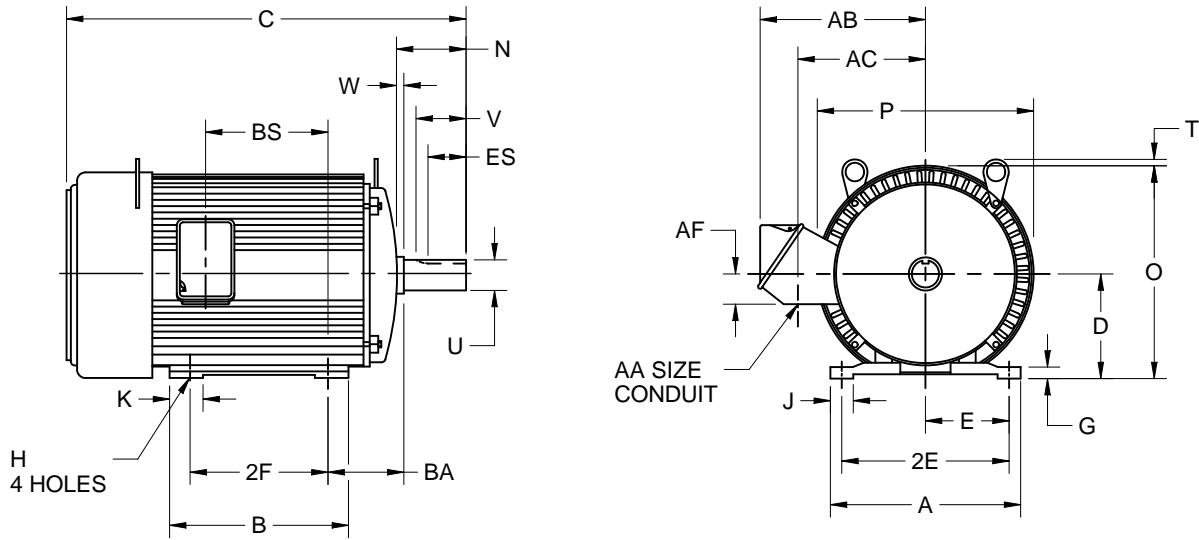
EFFECTIVE:
08-FEB-12

SUPERSEDES:
21-AUG-98

HORIZONTAL MOTORS
TEFC - WORLD MOTOR
FRAME: 182T - A286TS
BASIC TYPE: FUT -

PRINT:
07-1989

SHEET:
2 OF 2



ALL DIMENSIONS ARE IN MILLIMETERS

FRAME	A	D -.06	E	2E ±.03	G	H +.05	J	K	O	P ²	T	W
180T	213	114	95	190	10	10	22	48	236	243	10	3
210T	241	133	108	216	16	11	29	40	276	286	10	3
250T	289	159	127	254	18	13	35	51	329	340	0.00	3
A280T, TS	327	178	140	279	19	13	48	67	348	340	0.00	3

FRAME	AA	AB	AC	AF	BA
180T	19	190	160	54	70
210T	25	209	162	40	89
250T	32	252	194	46	108
A280T, TS	38	275	209	54	121

FRAME	B	C	2F ±.03	N	U -.0005	V MIN	BS	ES MIN	SQ KEY
182T	162	410	114	73	28.575	65	140	45	6.35
184T	162	429	140	73	28.575	65	159	45	6.35
213T	187	473	140	89	34.925	79	130	61	7.95
215T	225	511	178	89	34.925	78	168	61	7.95
254T	271	606	210	105	41.275	95	187	74	9.52
256T	316	651	254	105	41.275	95	232	74	9.52
A284T	311	717	241	121	47.625	112	270	83	12.70
A284TS	311	683	241	86	41.275	77	270	48	9.52
A286T	349	717	279	121	47.625	86	270	83	12.70
A286TS	349	683	279	86	41.275	77	270	48	9.52

1. ALL ROUGH CASTING DIMENSIONS MAY VARY BY .25" DUE TO CASTING AND/OR FABRICATION VARIATIONS.

2. LARGEST MOTOR WIDTH.

3. CONDUIT BOX MAY BE LOCATED ON EITHER SIDE OF MOTOR. CONDUIT OPENINGS MAY BE LOCATED IN STEPS OF 90 DEGREES REGARDLESS OF LOCATION. STANDARD AS SHOWN WITH CONDUIT OPENING DOWN.

07-1989/A

Nidec Motor Corporation
St. Louis, Missouri

INFORMATION DISCLOSED ON THIS DOCUMENT IS CONSIDERED PROPRIETARY AND SHALL NOT BE REPRODUCED OR DISCLOSED WITHOUT WRITTEN CONSENT OF NIDEC MOTOR CORPORATION



ISSUED BY
D. MENDEZ
APPROVED BY
J. AGUILAR

IHP_DP_NMCA (MAR-2011) SOLIDEDGE