

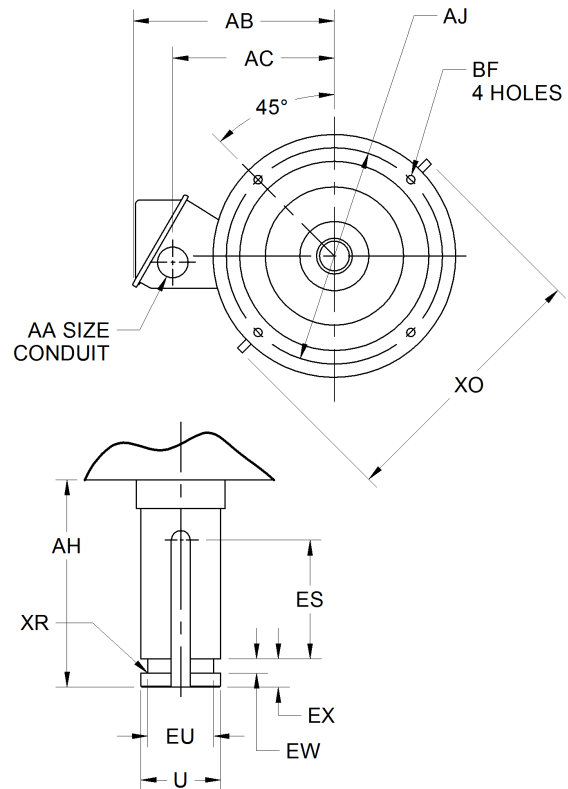
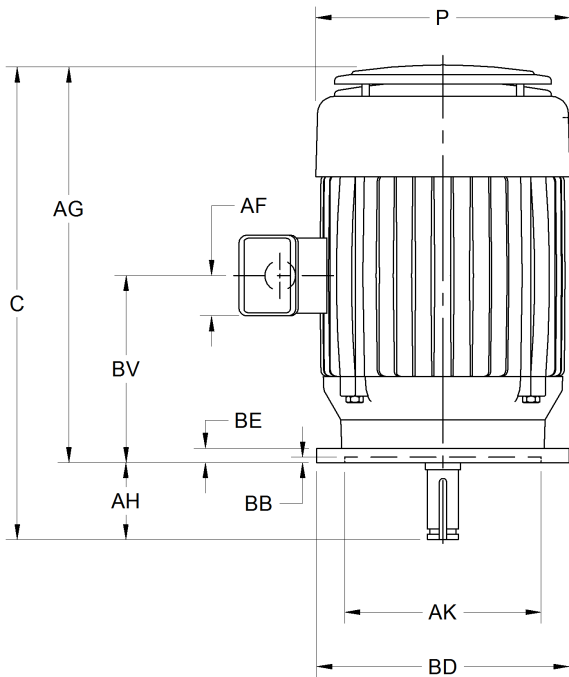
EFFECTIVE:  
**03-SEP-15**

SUPERSEDES:  
**10-DEC-13**

**DIMENSION PRINT**  
**WPI WITH OVERSIZED CONDUIT BOX**  
**FRAME: 250VP, VPH**  
**BASIC TYPE: AV**

PRINT:  
**09-3097**

SHEET:  
**1 OF 1**



ALL DIMENSIONS ARE IN INCHES AND MILLIMETERS

UNITS	C	P <sup>2</sup>	U -.0005	AA	AB	AC	AF	AG	AH +.063	AJ	AK +.003	BB MIN
IN	22.00	13.38	1.1250	1.50	11.00	8.31	2.59	19.25	2.750	9.125	8.250	.19
MM	559	340	28.575		279	211	66	489	69.85	231.78	209.55	5

UNITS	BE	BF	BV	ES MIN	EU -.005	EW +.002	EX -.005	XO	XR	SQ KEY
IN	.94	.44	12.75	1.31	.875	.375	.750	16.88	.03	.250
MM	24	11	324	33	22.23	9.53	19.05	429	1	6.35

FRAME	UNITS	BD MAX
254, 256VP	IN	10.00
	MM	254
254, 256VPH	IN	12.00
	MM	305

- ALL ROUGH CASTING DIMENSIONS MAY VARY BY .25" DUE TO CASTING AND/OR FABRICATION VARIATIONS.
- LARGEST MOTOR WIDTH.
- CONDUIT OPENINGS MAY BE LOCATED IN STEPS OF 180 DEGREES. STANDARD AS SHOWN WITH CONDUIT OPENING DOWN.
- TOLERANCES SHOWN ARE IN INCHES ONLY.
- DIMENSIONS SHOWN ARE FOR ALL RATINGS EXCEPT 20HP, 4 POLE TYPE AVS. FOR THIS RATING. THE DIMENSIONS ARE: C= 24.50 (622 MM), AG= 21.25 (552 MM).

TOLERANCES	
FACE RUNOUT	.004 T.I.R.
PERMISSIBLE ECCENTRICITY OF MOUNTING RABBET	.004 T.I.R.
PERMISSIBLE SHAFT RUNOUT	.002 T.I.R.

**Nidec Motor Corporation**  
**St. Louis, Missouri**

INFORMATION DISCLOSED ON THIS DOCUMENT  
IS CONSIDERED PROPRIETARY AND SHALL NOT BE  
REPRODUCED OR DISCLOSED WITHOUT WRITTEN  
CONSENT OF NIDEC MOTOR CORPORATION



ISSUED BY  
**G. MARTINEZ**  
APPROVED BY  
**J. MAGALLANES**

IHP\_DP\_NMCA (MAR-2011) SOLIDEDGE