

EFFECTIVE:  
17-OCT-14

# DIMENSION PRINT

TEFC

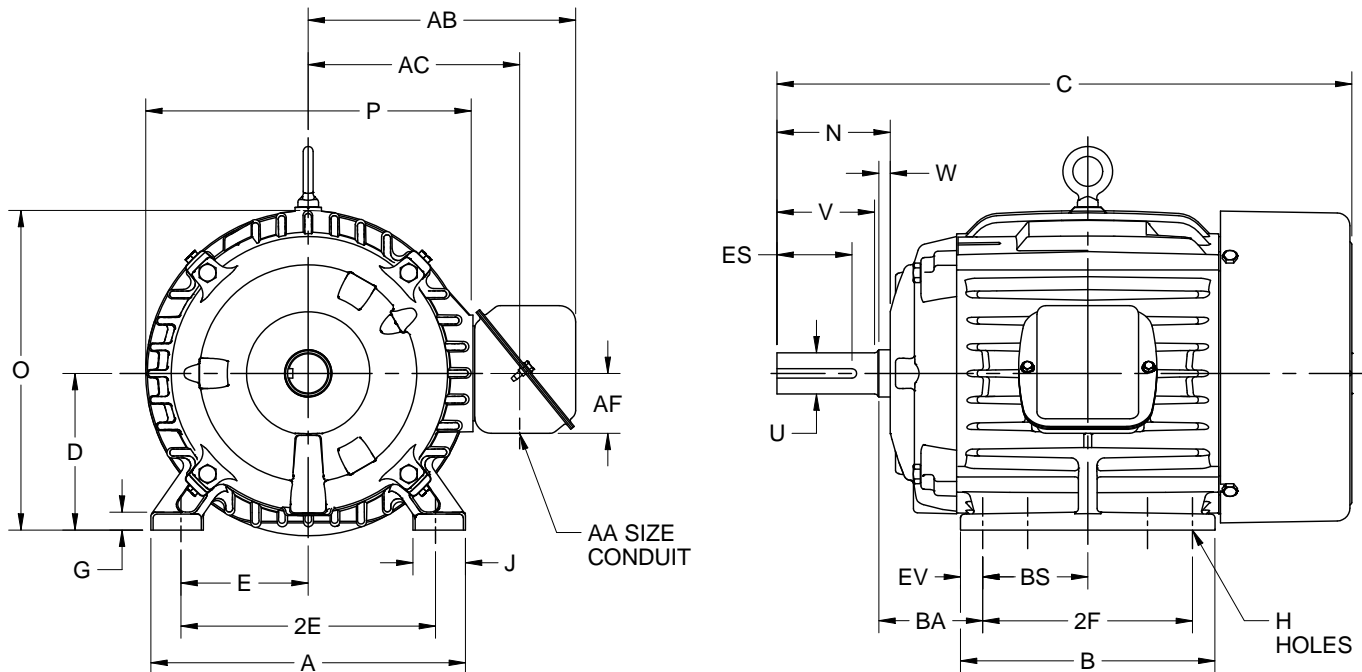
PRINT:  
07-2886-07

SUPERSEDES:  
NEW

FRAME: 210T  
BASIC TYPE: CT

SHEET:  
1 OF 1

## F-2 ASSEMBLY POSITION



ALL DIMENSIONS ARE IN INCHES AND MILLIMETERS

UNITS	A	B	C	D	E	2E	G	H	J	N	O
IN	10.50	8.50	19.19	5.25	4.25	8.50	.53	.41	1.75	3.75	10.78
MM	267	216	487	133	108	216	14	10	44	95	274

UNITS	P <sup>2</sup>	T	U	V	W	AA	AB	AC	AF	BA	BS
IN	10.94	2.03	1.3750	3.13	.38	1.00	8.94	7.06	2.00	3.50	3.50
MM	278	52	34.925	80	10		213	179	51	89	89

UNITS	ES	EV	SQ
IN	2.41	.75	.313
MM	61	19	7.95

FRAME	UNITS	2F
213T	IN	5.50
	MM	140
215T	IN	7.00
	MM	178

1. DIMENSIONS MAY VARY .25" DUE TO CASTING AND/OR FABRICATION VARIATIONS.
2. LARGEST MOTOR WIDTH.
3. TOLERANCES ARE SHOWN IN INCHES.
4. CONDUIT BOX MAY BE LOCATED ON EITHER SIDE OF MOTOR. CONDUIT OPENINGS MAY BE LOCATED IN STEPS OF 90 DEGREES REGARDLESS OF LOCATION. STANDARD AS SHOWN WITH CONDUIT OPENING DOWN.

**Nidec Motor Corporation**  
St. Louis, Missouri

INFORMATION DISCLOSED ON THIS DOCUMENT  
IS CONSIDERED PROPRIETARY AND SHALL NOT BE  
REPRODUCED OR DISCLOSED WITHOUT WRITTEN  
CONSENT OF NIDEC MOTOR CORPORATION



ISSUED BY  
**M. YRISSON**  
APPROVED BY  
**F. LARA**

IHP\_DP\_NMCA (MAR-2011) SOLIDEDGE