

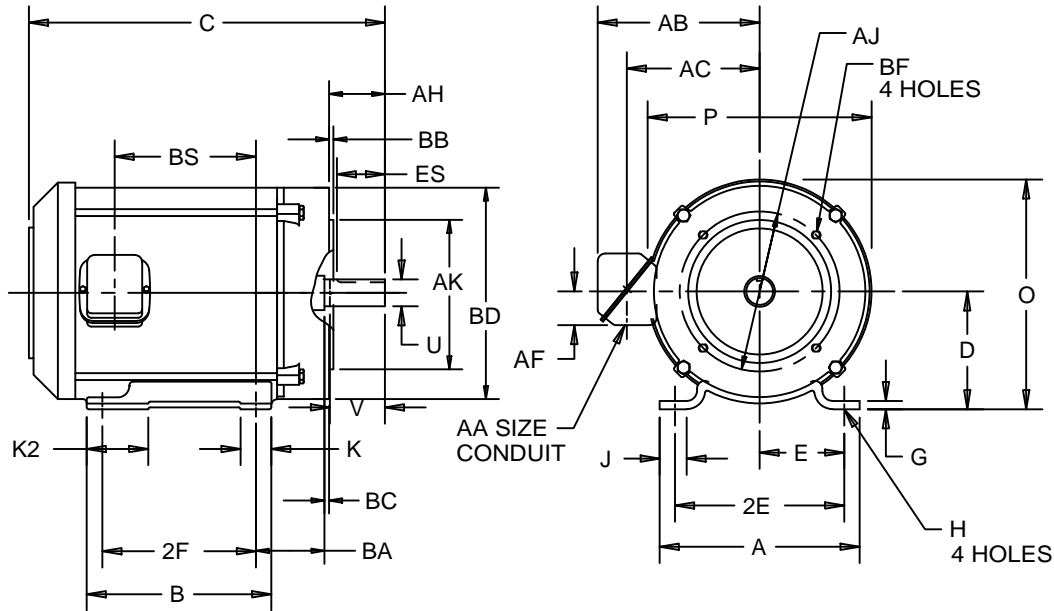
EFFECTIVE:
25-OCT-13

DIMENSION PRINT
TEFC WITH "C" BRACKET KIT - 6.50" FRAME
FRAME: 140TC
BASICTYPE: CTE, CTI

PRINT:
07-2005

SUPERSEDES:
12-OCT-01

SHEET:
1 OF 1



ALL DIMENSIONS ARE IN INCHES AND MILLIMETERS

UNITS	A	B	C	E	G	J	K	K2	O
IN	6.50	6.00	12.63	2.75	.13	1.00	.94	1.88	7.38
MM	165	152	321	70	3	25	24	48	187

UNITS	P ²	V MIN	AA	AB	AC	AF	AH	AJ	AK -.003
IN	7.75	2.00	.75	6.13	4.66	1.59	2.13	5.875	4.500
MM	197	51		156	118	40	54	149.23	114.30

UNITS	BA ⁷	BB -.06	BC	BD	BF ⁵	BS	ES MIN	SQ KEY
IN	2.25	.16	.13	6.50	3/8-16 x .56	4.38	1.41	.188
MM	57	4	3	156		111	35	4.78

FRAME	UNITS	D -.06	2E ±.03	2F ±.03	H +.05	U -.0005
143TC	IN	3.50	5.50	4.00	.34	.8750
	MM	89	140	102	9	22.225
145TC	IN	3.50	5.50	5.00	.34	.8750
	MM	89	140	127	9	22.225

- 1: ALL ROUGH CASTING DIMENSIONS MAY VARY BY .25" DUE TO CASTING AND/OR FABRICATION VARIATIONS.
- 2: LARGEST MOTOR WIDTH.
- 3: CONDUIT BOX MAY BE LOCATED ON EITHER SIDE OF MOTOR. CONDUIT OPENINGS MAY BE LOCATED IN STEPS OF 90 DEGREES REGARDLESS OF LOCATION. STANDARD AS SHOWN WITH CONDUIT OPENING DOWN.
- 4: TOLERANCES SHOWN ARE IN INCHES ONLY.
- 5: TAP SIZE AND BOLT PENETRATION ALLOWANCE.
- 6: ALL TAPPED HOLES ARE UNIFIED NATIONAL COARSE, RIGHT HAND THREAD.
- 7: NON-NEMA "BA" DIMENSION.

07-2005/B

Nidec Motor Corporation
St. Louis, Missouri

INFORMATION DISCLOSED ON THIS DOCUMENT IS CONSIDERED PROPRIETARY AND SHALL NOT BE REPRODUCED OR DISCLOSED WITHOUT WRITTEN CONSENT OF NIDEC MOTOR CORPORATION



ISSUED BY
R. KING
APPROVED BY
K. POTTER

IHP_DP_NMCA (MAR-2011) SOLIDEDGE