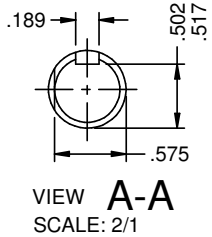
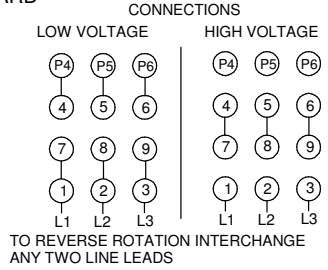
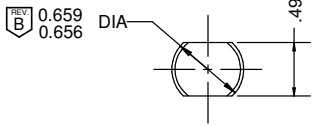
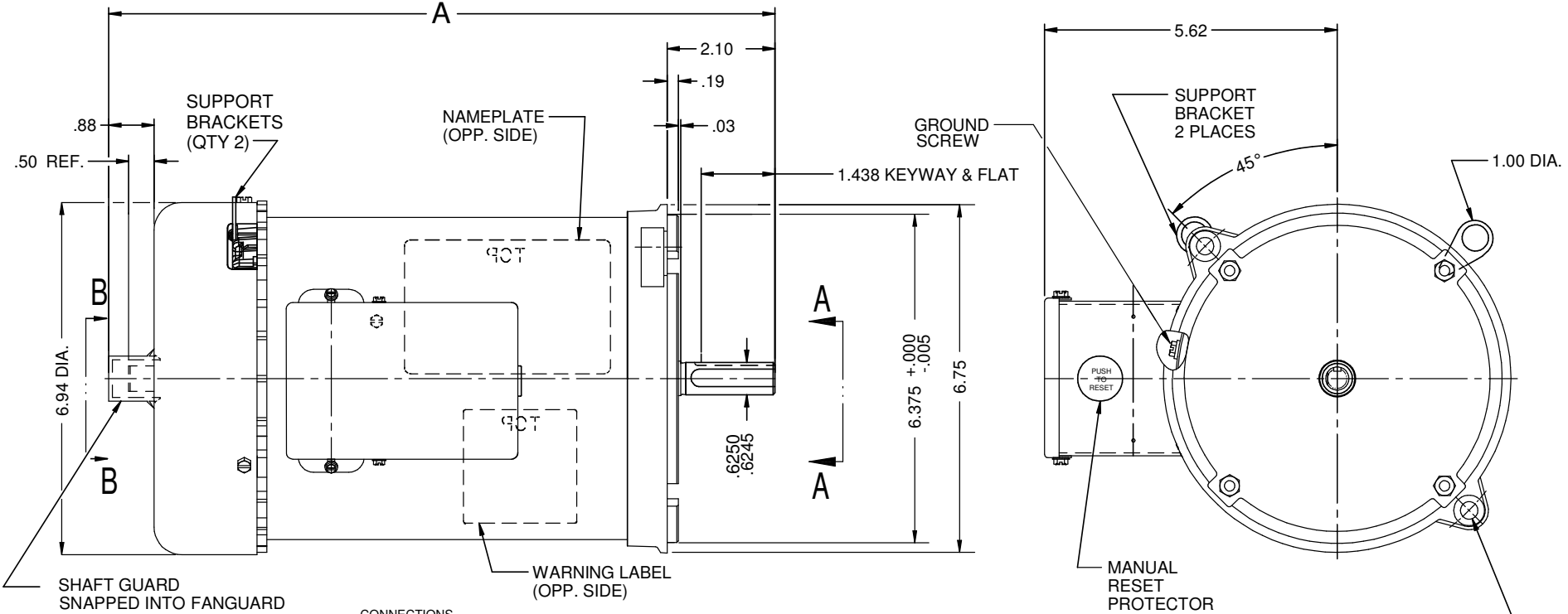


VAR	MODEL	CUSTOMER	CAT. NO.	A	B	C	D	HP	VOLTS	SF	AMPS	HZ	RPM	CONN VOLTS	PROT.	DESCRIPTION / REMARKS
001	P63YZDZZ-1488	USEM	FD1PM2DZYR	12.97	----	----	----	1.0	208-230/460	1.15	3.3-3.2/1.5	60&50	1725&1425	230	MANUAL	N56Y TEFC AUGER MOTOR
002	P63AZAKU-1384	USEM	FD32PM2DZYR	13.97	----	----	----	1 1/2	208-230/460	1.15	4.5-4.5/2.2	60&50	1725&1425	230	MANUAL	N56Y TEFC AUGER MOTOR

SHAFT KEY TAPED TO MOTOR



NOTE: 50HZ  
VOLTAGE: 190/380

NIDEC MOTOR CORPORATION 25-Jun-18

REFER TO S.E.I.M. 24-1

REVISION RECORD FOR:		TOLERANCES ON DIMENSIONS (UNLESS OTHERWISE SPECIFIED)		NIDEC MOTOR CORPORATION			REVISION DATE:		
UPDATED DIAMETER IN THE SHAFT OF THE VIEW B-B		INCHES .XX = ±.010 .XXX = ±.005		INFORMATION DISCLOSED ON THIS DOCUMENT IS CONSIDERED PROPRIETARY AND SHALL NOT BE REPRODUCED OR DISCLOSED WITHOUT WRITTEN CONSENT OF NIDEC MOTOR CORPORATION			25-JUN-18		
ISSUED BY: D. VALLE		mm		TITLE			REV		
ENGINEER APPROVED: T. BOSSALLER		ANGLES X° = ±1°		CUSTOMER DETAIL DRAWING			SHEET NUMBER		
				CODE			DWG SIZE		
				ITEM NO.			1 OF 4		
				V02			B		
				810956			B		