

SHEET NUMBER 1 OF 2	REV E	REVISION RECORD FOR: E31416	
		SCREW VIEW WAS UPDATED	
REVISION DATE 23-JUL-18			
ISSUED BY D. VALLE	REVIEWED BY J. SALINAS	ENGINEER APPROVED J.I. SALAZAR	

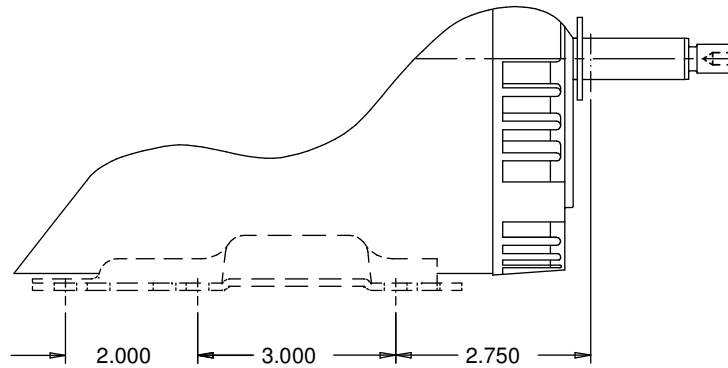
INFORMATION DISCLOSED ON THIS DOCUMENT IS CONSIDERED PROPRIETARY AND SHALL NOT BE REPRODUCED OR DISCLOSED WITHOUT WRITTEN CONSENT OF NIDEC MOTOR CORPORATION

ALL DIMENSIONS ARE FOR REFERENCE ONLY UNLESS TOLERANCE IS GIVEN

TITLE
ASSEMBLED VIEW

NIDEC MOTOR CORPORATION		CODE V01	ITEM NO. 783510	SIZE B
--------------------------------	--	--------------------	---------------------------	------------------

VAR	MODEL	CUSTOMER	CATALOG PT. NO.	A	HP	VOLTS	SF	SF AMPS	HZ	RPM	50 HZ VOLTS	50 HZ AMPS	BEARINGS	ROTATION	FACTORY WIRED FOR	BASE REQUIREMENT
001	P63GCS-4910	COMMERCIAL PUMPS	EE283B	11.16	1/2	208-230/460	1.6/1.0	2.8-2.7/1.35	60/50	3450/2850	190/380-415	2.2/1.1-1.2	BALL	CCW SHAFT END	LOW VOLTAGE	STD N56
002	P63GCT-4911	COMMERCIAL PUMPS	EE515B	11.88	3/4	208-230/460	1.5/1.0	3.7-3.6/1.8	60/50	3450/2850	190/380-415	3.0/1.5-1.5	BALL	CCW SHAFT END	LOW VOLTAGE	STD N56
003	P63GCU-4912	COMMERCIAL PUMPS	EE516B	11.16	1	208-230/460	1.4/1.0	4.4-4.2/2.1	60/50	3450/2850	190/380-415	3.8/1.9-2.0	BALL	CCW SHAFT END	LOW VOLTAGE	STD N56
004	P63GCV-4913	COMMERCIAL PUMPS	EE661B	12.912	1-1/2	208-230/460	1.3/1.0	5.6-5.4/2.7	60/50	3450/2850	190/380-415	5.0/2.5-2.5	BALL	CCW SHAFT END	LOW VOLTAGE	STD N56
005	P63GCW-4914	COMMERCIAL PUMPS	EE706B	13.38	2	208-230/460	1.25/1.0	7.1-6.6/3.3	60/50	3450/2850	190/380-415	6.4/3.2-3.1	BALL	CCW SHAFT END	LOW VOLTAGE	STD N56
006	P63GCY-4915	COMMERCIAL PUMPS	EE707B	13.88	3	208-230/460	1.15/1.0	9.6-8.6/4.3	60/50	3450/2850	190/380-415	9.0/4.5-4.2	BALL	CCW SHAFT END	LOW VOLTAGE	STD N56



PARTIAL VIEW
SHOWING N56H BASE

SHEET NUMBER 2 OF 2	REV E	REVISION RECORD FOR: E31416		INFORMATION DISCLOSED ON THIS DOCUMENT IS CONSIDERED PROPRIETARY AND SHALL NOT BE REPRODUCED OR DISCLOSED WITHOUT WRITTEN CONSENT OF NIDEC MOTOR CORPORATION	NIDEC MOTOR CORPORATION			
		SCREW VIEW WAS UPDATED						
REVISION DATE 23-JUL-18				ALL DIMENSIONS ARE FOR REFERENCE ONLY UNLESS TOLERANCE IS GIVEN				
ISSUED BY D. VALLE		REVIEWED BY J. SALINAS	ENGINEER APPROVED J.I. SALAZAR	TITLE ASSEMBLED VIEW		CODE V01	ITEM NO. 783510	SIZE B