

VAR	MODEL	CATALOG NO.	A	BASE REQUIREMENT
001	T63CXCPF-1450	EC13	12.846	NONE
002	T63CXCPH-1452	EC13B	12.846	STD N56
003	T63MWCPG-1451	EC16	13.346	NONE
004	T63CXCPJ-1453	EC16B	13.346	N56H
005	T63XCPT-1461	EC12	12.346	NONE

SHEET NUMBER	REV	REVISION RECORD FOR: C5177-21
1 OF 2	C	UPDATED BACKGROUND TO NIDEC.
REVISION DATE		27-MAR-12
ISSUED BY	REVIEWED BY	ENGINEER APPROVED
B. ANDRADE	J. I. SALAZAR	J. I. SALAZAR

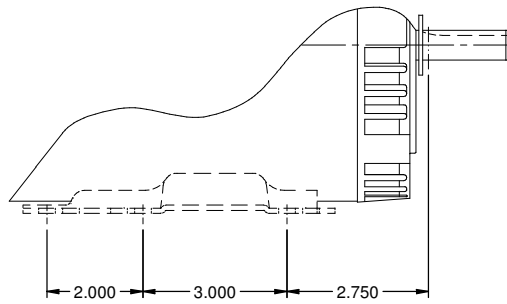
INFORMATION DISCLOSED ON THIS DOCUMENT IS CONSIDERED PROPRIETARY AND SHALL NOT BE REPRODUCED OR DISCLOSED WITHOUT WRITTEN CONSENT OF NIDEC MOTOR CORPORATION

ALL DIMENSIONS ARE FOR REFERENCE ONLY UNLESS TOLERANCE IS GIVEN

TITLE: ASSEMBLED VIEW

NIDEC MOTOR CORPORATION		CODE	ITEM NO.	SIZE
		V01	746670	B

VAR	MODEL	CATALOG NO.	A	BASE REQUIREMENT
006	T63CXPY-1463	EC12B	13.346	STD N56
007	T63CXPW-1462	EC14	13.346	NONE



PARTIAL VIEW
SHOWING N56H BASE

SHEET NUMBER 2 OF 2	REV C	REVISION RECORD FOR: C5177-21		INFORMATION DISCLOSED ON THIS DOCUMENT IS CONSIDERED PROPRIETARY AND SHALL NOT BE REPRODUCED OR DISCLOSED WITHOUT WRITTEN CONSENT OF NIDEC MOTOR CORPORATION	NIDEC MOTOR CORPORATION		
	UPDATED BACKGROUND TO NIDEC.						
REVISION DATE 27-MAR-12			ALL DIMENSIONS ARE FOR REFERENCE ONLY UNLESS TOLERANCE IS GIVEN				
ISSUED BY B. ANDRADE	REVIEWED BY J. I. SALAZAR	ENGINEER APPROVED J. I. SALAZAR	TITLE ASSEMBLED VIEW		CODE V01	ITEM NO. 746670	SIZE B

