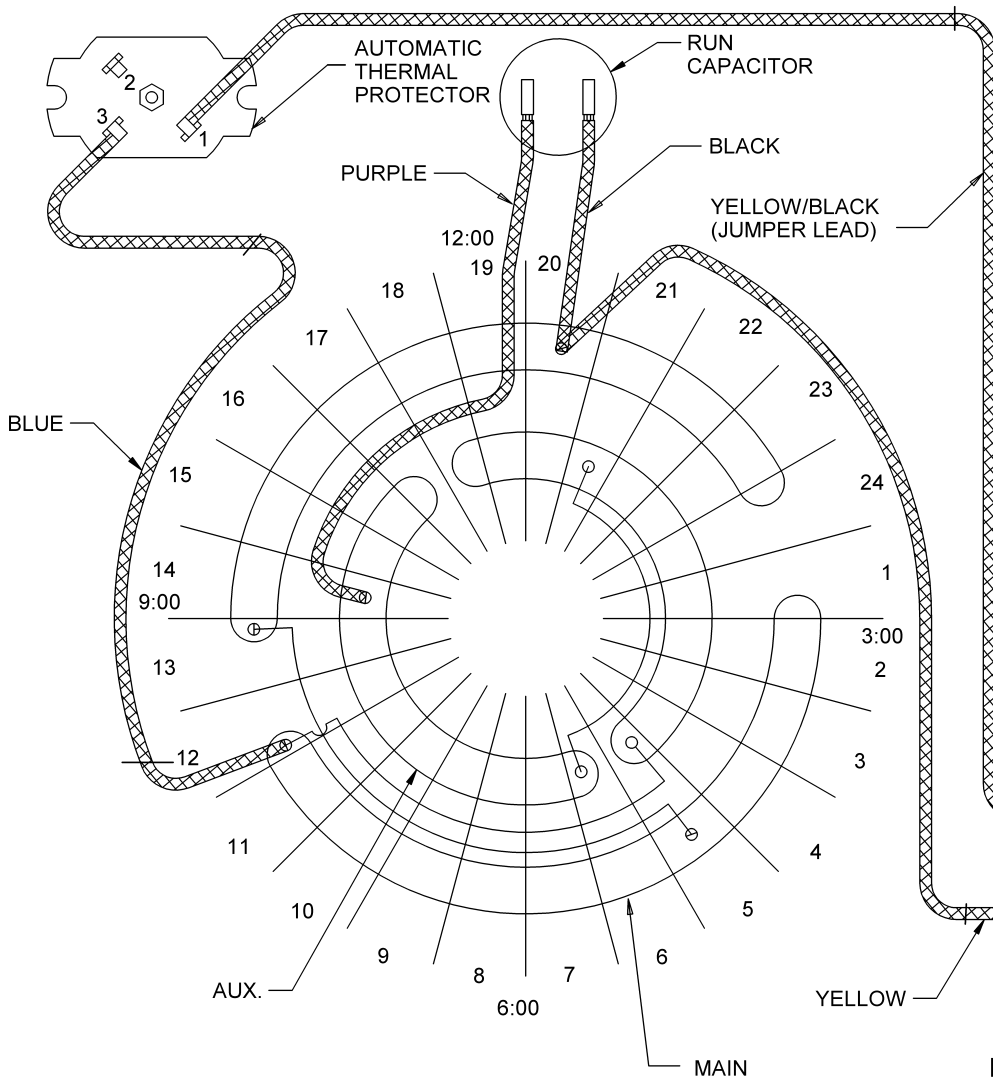
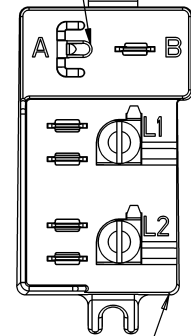


VIEWING LEAD END



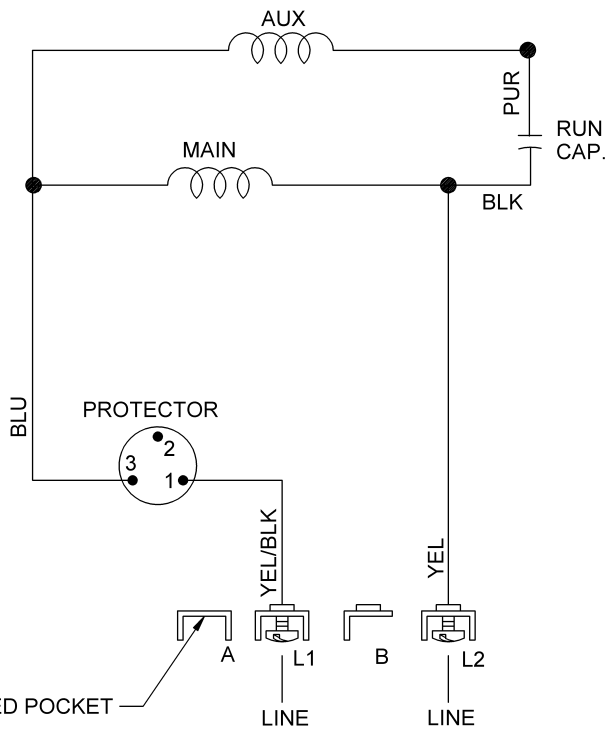
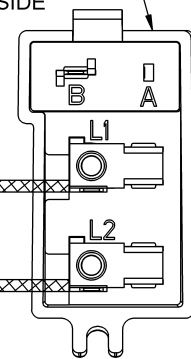
INSULATED POCKET (NO CONDUCTIVE TERMINAL)

CUSTOMER SIDE



TERMINAL BOARD ASSEMBLY

NIDEC SIDE



CAUTION: AUX SHIFTED 1 SLOT CCW-LEAD END.
(SERIES MAIN POLES)
(SERIES AUX POLES)

REFER TO SEIM 24-1

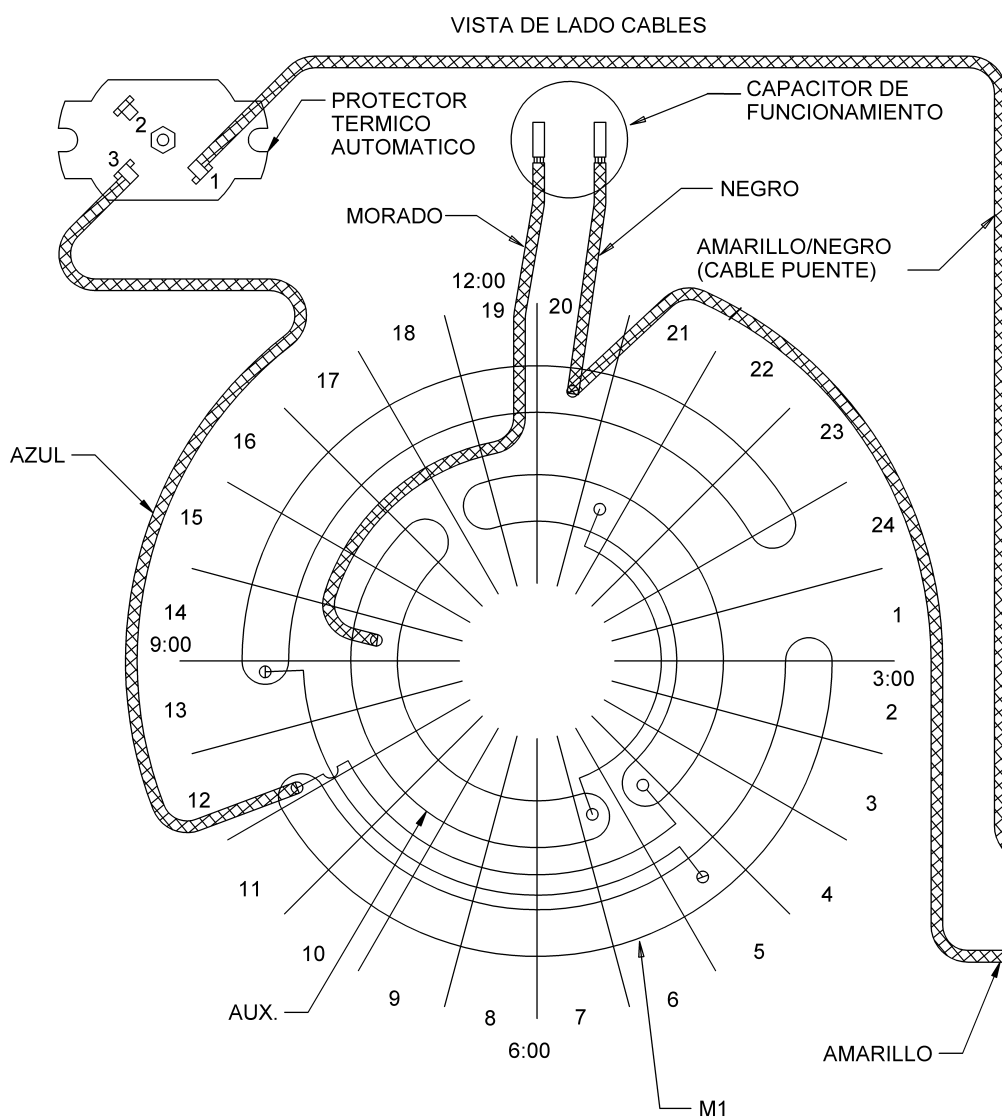
K63, 2P, SINGLE VOLT, NON-REV

REV. A

REVISION DESCRIPTION FOR: C8396-06		SCALE	UNITS	TITLE	NIDEC MOTOR CORPORATION
CHANGED MARK FROM EMERSON TO NIDEC. CHANGED FROM MICROSTATION TO SOLIDEDGE.		NONE	INCHES	DIAGRAM OF CONNECTIONS	
MATERIAL:		TOLERANCES ON DIMENSIONS (UNLESS OTHERWISE SPECIFIED)		ISSUED BY	REVISION DATE
		INCHES	mm	E. VICENCIO	24-SEP-13
		± .015		APPROVED BY	REV
		ANGLES X° = ±1°		J.I. SALAZAR	SHEET NUMBER
				CODE	1 OF 2
				D04	DWG SIZE
				738916	B

NIDEC CONFIDENTIAL
NIDEC MOTOR CORPORATION 23-Sep-13

MUST BE COMPLIANT TO RoHS DIRECTIVE EU 2002/95/REC AND REGULATION EC 1907/2006 (REACH) AS AMENDED

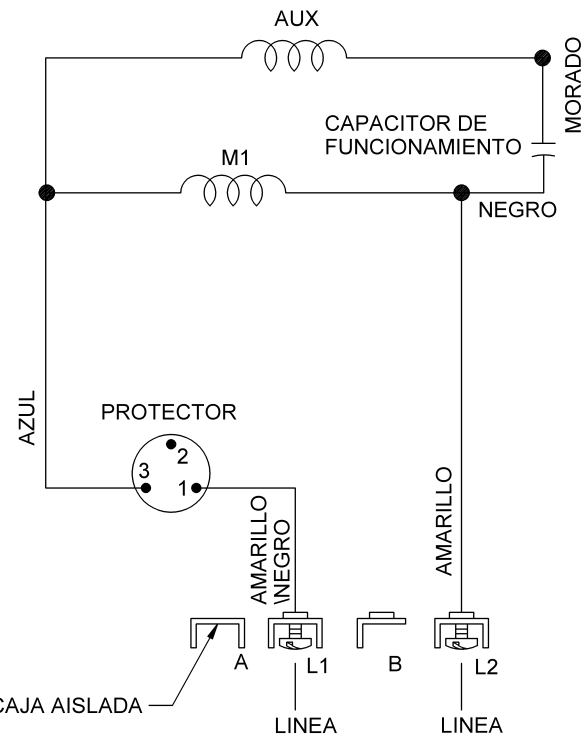


CAJA AISLADA (SIN TERMINAL)

LADO CLIENTE

ENSAMBLE DE TABLILLA DE TERMINAL

LADO NIDEC



ROTACION: CW LADO CABLES

K63, 2P, VOLTAJE SENCILLO, NO REVERSIBLE

PRECAUCION: AUX GIRADO 1 SLOT
CCW-LEAD END.
(POLOS EN SERIE M1)
(POLOS EN SERIE AUX)

NIDEC CONFIDENTIAL
NIDEC MOTOR CORPORATION 23-Sep-13

REV. A

REVISION DESCRIPTION FOR: C8396-06		SCALE	UNITS	TITLE		NIDEC MOTOR CORPORATION	
CHANGED MARK FROM EMERSON TO NIDEC.		NONE	INCHES	DIAGRAM OF CONNECTIONS		24-SEP-13	
CHANGED FROM MICROSTATION TO SOLIDEDGE.		TOLERANCES ON DIMENSIONS (UNLESS OTHERWISE SPECIFIED)					
MATERIAL:		INCHES	mm	ISSUED BY	APPROVED BY	REVISION DATE	SHEET NUMBER
		± .015		E. VICENCIO	J.I. SALAZAR	24-SEP-13	2 OF 2
		ANGLES X° = ±1°		CODE	DWG NO.	REV	DWG SIZE
				D04	738916	A	B