

EFFECTIVE:
05-DEC-12

HORIZONTAL MOTORS

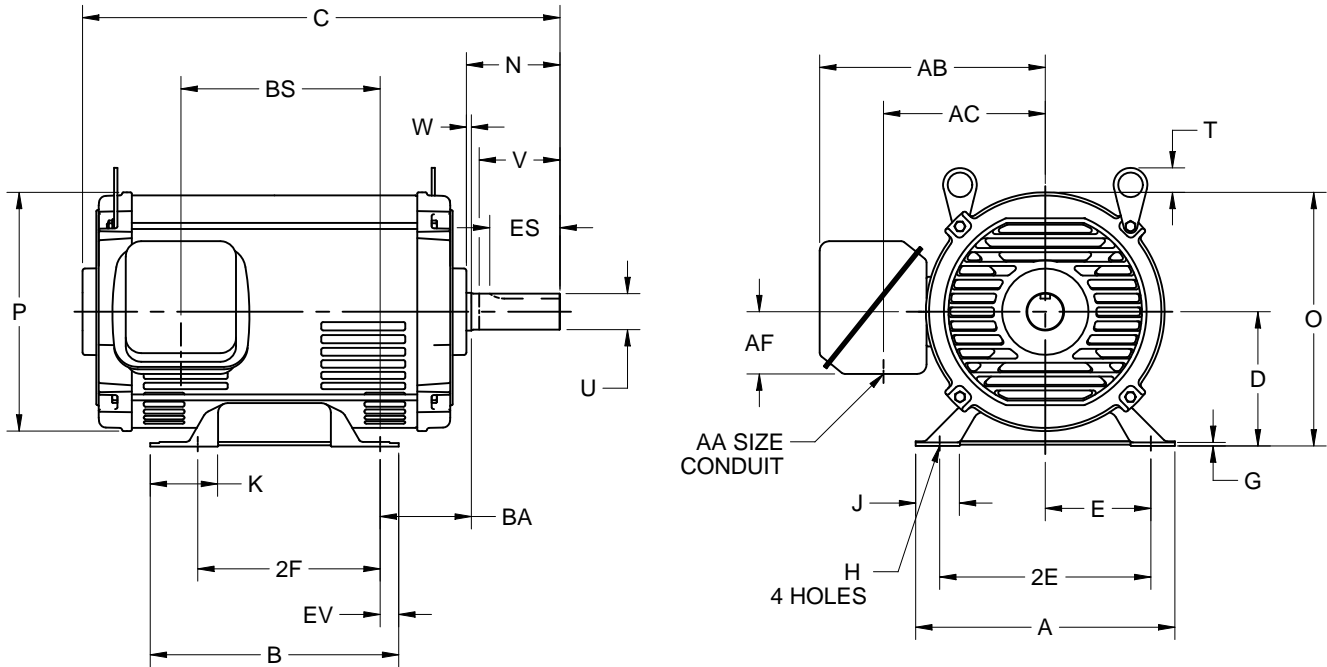
PRINT:
07-3043

SUPERSEDES:
10-OCT-12

OPEN DRIP PROOF

FRAME: 215T
BASIC TYPE: D

SHEET:
1 OF 1



ALL DIMENSIONS ARE IN INCHES AND MILLIMETERS

UNITS	A	B	C	D	E	2E	2F	G	H	J	K	N
IN	9.50	8.00	16.00	.06	4.25	8.50	7.00	.19	.41	1.00	1.00	3.50
MM	241	203	406	133	108	216	178	5	10	25	25	89

UNITS	O	P ²	T	U	V	W	AA	AB	AC	AF	BA	BS
IN	9.96	9.42	1.25	-.0005	MIN	.13	1.00	7.60	6.40	2.13	3.50	6.66
MM	253	239	32	34.925	83	3		193	163	54	89	169

UNITS	ES	EV	SQ KEY
IN	MIN	.50	.313
MM	61	13	7.95

1. ALL ROUGH DIMENSIONS MAY VARY BY .25" DUE TO CASTING AND/OR FABRICATION VARIATIONS.
2. LARGEST MOTOR WIDTH.
3. TOLERANCES ARE IN INCHES ONLY.

4. CONDUIT OPENINGS MAY BE LOCATED IN STEPS OF 90° REGARDLESS OF LOCATION. STANDARD AS SHOWN WITH CONDUIT OPENING DOWN.
5. FRAME REFERENCE: 10.530/215

07-3043/A

Nidec Motor Corporation
St. Louis, Missouri

INFORMATION DISCLOSED ON THIS DOCUMENT IS CONSIDERED PROPRIETARY AND SHALL NOT BE REPRODUCED OR DISCLOSED WITHOUT WRITTEN CONSENT OF NIDEC MOTOR CORPORATION



ISSUED BY
E. ARREDONDO
APPROVED BY
J. O'BRIEN

IHP_DP_NMCA (MAR-2011) SOLIDEDGE