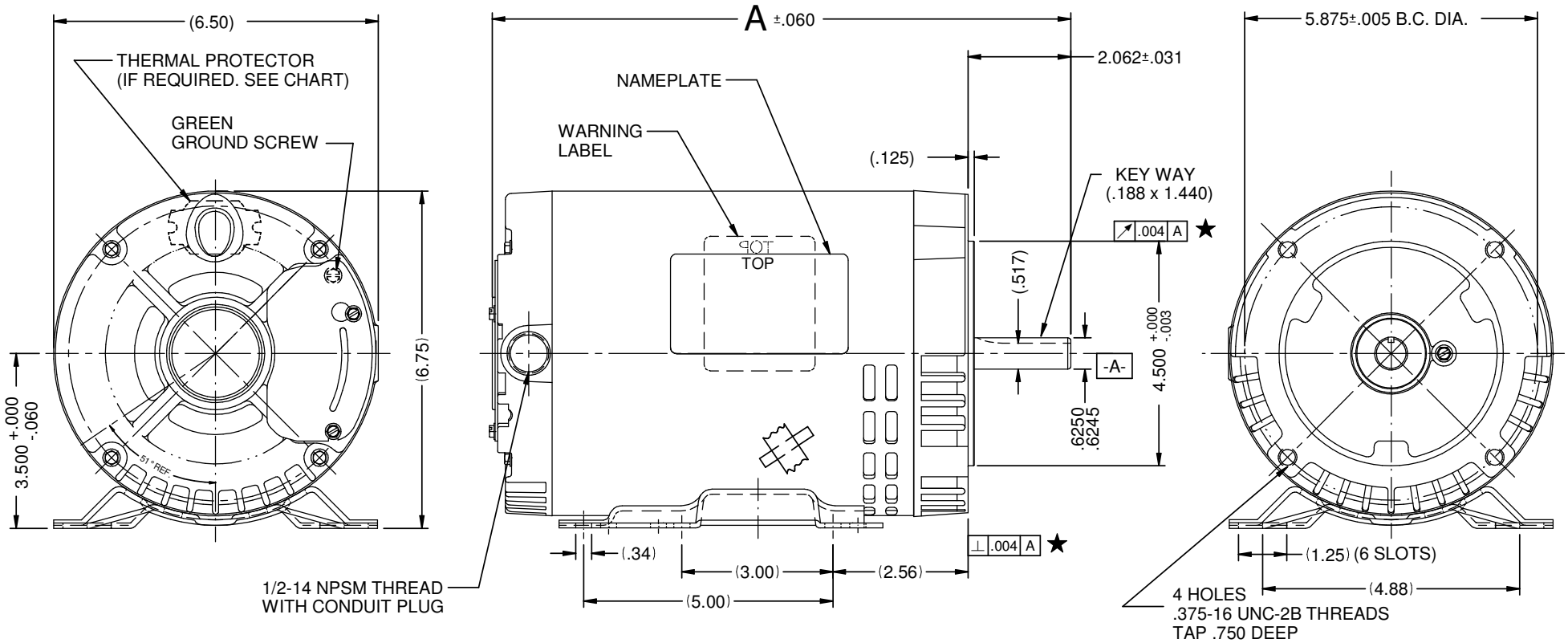


VAR	MODEL	CUSTOMER	CAT. NO.	A	B	C	D	HP	VOLTS	SF	AMPS	HZ	RPM	CONN VOLTS	PROT.	BASE	DESCRIPTION / REMARKS
001	P63AJP-1356	USEM	D32P1AHC	11.89	----	----	----	1.5	208-230/460	1.15	4.7-4.4/2.2	60	3450		NONE	N56H	N56HC, ODP

SHAFT KEY TAPED TO MOTOR



NIDEC MOTOR CORPORATION 10-Jul-15

ROTATION: REVERSIBLE, TO REVERSE ROTATION INTERCHANGE ANY TWO LINE LEADS.

REFER TO S.E.I.M. 24-1

CREATED DRAWING.		REVISION RECORD FOR: JC 69675		<b>NIDEC MOTOR CORPORATION</b> INFORMATION DISCLOSED ON THIS DOCUMENT IS CONSIDERED PROPRIETARY AND SHALL NOT BE REPRODUCED OR DISCLOSED WITHOUT WRITTEN CONSENT OF NIDEC MOTOR CORPORATION				REVISION DATE: 10-JUL-15		
								TITLE: CUSTOMER DETAIL DRAWING		CODE: V02
ISSUED BY: A. DEL ANGEL		ENGINEER APPROVED: T. BOSSALLER		TOLERANCES ON DIMENSIONS (UNLESS OTHERWISE SPECIFIED) INCHES: .XX = ± .010, .XXX = ± .005 ANGLES: X° = ± 1°						