

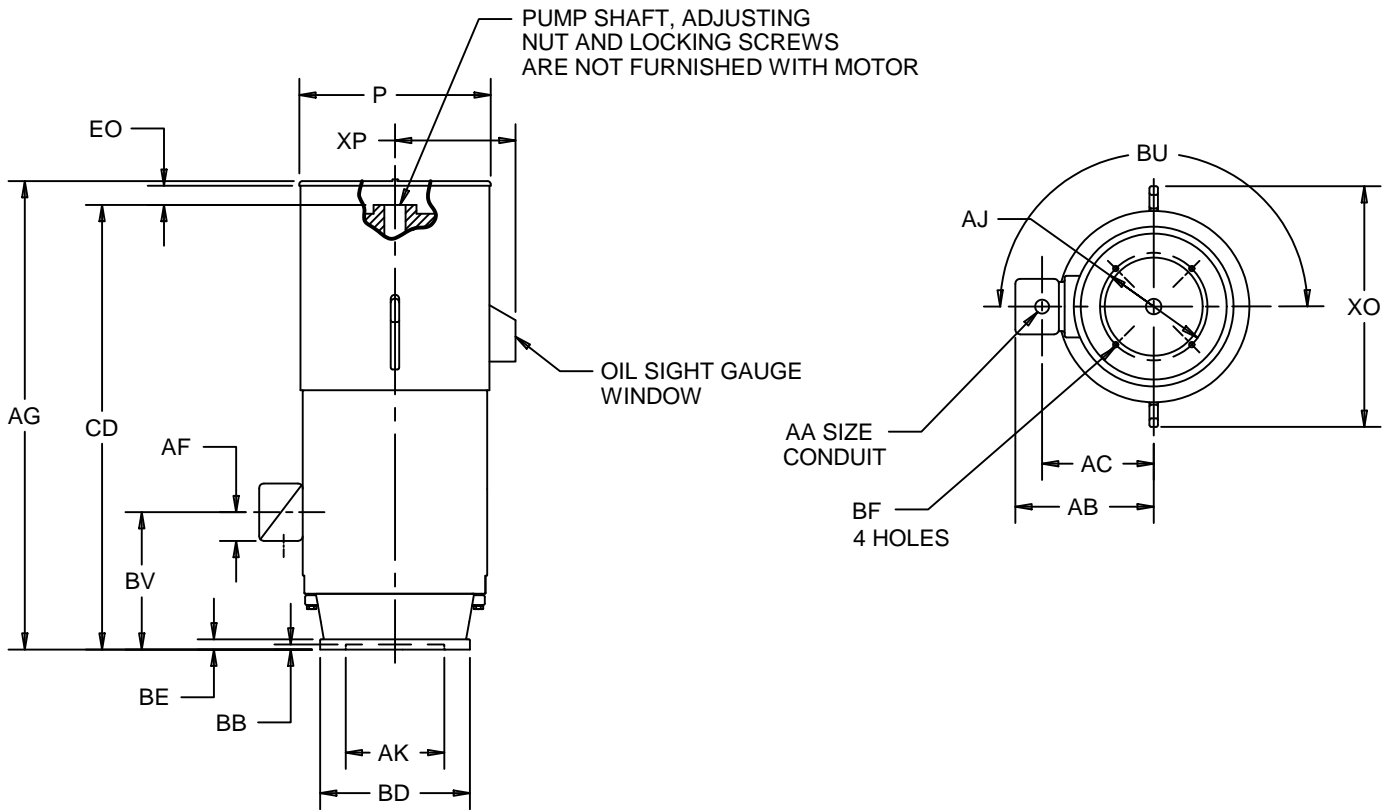
EFFECTIVE:
21-OCT-14

DIMENSION PRINT
TOTALLY ENCLOSED FAN COOLED
FRAME: 449TP, TPH
BASIC TYPE: JU

PRINT:
09-1818-81

SUPERSEDES:
NEW

SHEET:
1 OF 1



ALL DIMENSIONS ARE IN INCHES AND MILLIMETERS

UNITS	P ²	AG	AJ	AK +.005	BB	BE	BF
IN	26.25	63.88	14.75	13.500	.25	.88	.69
MM	667	1622	375	342.90	6	22	18

UNITS	BU	BV	CD	EO	XO	XP
IN	180°	12.50	56.88	4.50	33.00	14.50
MM		318	1445	114	838	368

HP	VOLTS	UNITS	AA	AB	AC	AF
ALL	460	IN	3 1/2 NPT	24.00	18.50	8.06
ALL	2300	MM		610	470	209
ALL	4000	IN		25.00	19.50	10.00
		MM		635	495	254

FRAME	UNITS	BD
449TP	IN	24.50
	MM	622
449TPH	IN	20.00
	MM	508

- 1: ALL ROUGH DIMENSIONS MAY VARY BY .25"/6MM DUE TO CASTING AND/OR FABRICATION VARIATIONS.
- 2: LARGEST MOTOR WIDTH.
- 3: CONDUIT OPENINGS MAY BE LOCATED IN STEPS OF 90 DEGREES. STANDARD AS SHOWN WITH CONDUIT OPENING DOWN.

	TOLERANCES	
	IN	MM
FACE RUNOUT	.007 T.I.R.	.17 T.I.R.
PERMISSIBLE ECCENTRICITY OF MOUNTING RABBET	.007 T.I.R.	.17 T.I.R.
MAXIMUM SHAFT ENDPLAY	.010	.25

09-1818/D

Nidec Motor Corporation
St. Louis, Missouri

INFORMATION DISCLOSED ON THIS DOCUMENT IS CONSIDERED PROPRIETARY AND SHALL NOT BE REPRODUCED OR DISCLOSED WITHOUT WRITTEN CONSENT OF NIDEC MOTOR CORPORATION



ISSUED BY
R. KING
APPROVED BY
R. KOHLMAN

IHP_DP_NMCA (MAR-2011) SOLIDEDGE