

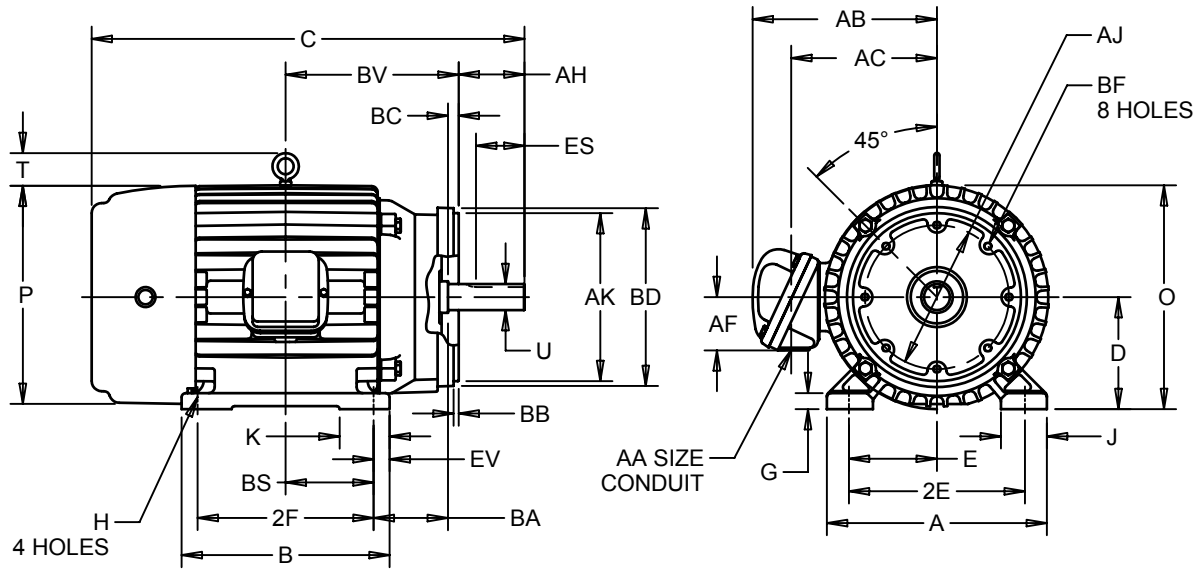
EFFECTIVE:  
**14-JUN-11**

SUPERSEDES:  
**02-APR-09**

**HORIZONTAL MOTORS**  
W/NEMA "C" BRACKET  
FRAME: 182, 184TC  
BASIC TYPE: CE, TC

PRINT:  
**07-2808**

SHEET:  
**1 OF 1**



ALL DIMENSIONS ARE IN INCHES AND MILLIMETERS

UNITS	A	B	C	D	E	2E	G	H	J	O	P <sup>5</sup>
IN	8.88	6.75	17.44	4.50	3.75	7.50	.63	.41	1.56	9.38	9.50
MM	226	171	443	114	95	191	16	10	40	238	241

UNITS	T	U	AA	AB	AC	AF	AH	AJ	AK	BA
IN	2.03	1.1250	3/4 NPT	7.94	5.75	2.13	2.63	7.250	8.500	3.50
MM	52	28.575		202	146	54	67	184.15	215.90	89

UNITS	BB	BC	BD MAX	BS	BF <sup>2</sup>	BV	ES MIN	EV	SQ KEY
IN	.25	.13	9.00	2.63	1/2-13 X .75	6.38	1.78	.63	.250
MM	6	3	229	67		162	45	16	6.35

FRAME	UNITS	2F
182TC	IN	4.50
	MM	114
184TC	IN	5.50
	MM	140

- 1: ALL ROUGH DIMENSIONS MAY VARY BY .25" DUE TO CASTING AND/OR FABRICATION VARIATIONS.
- 2: TAP SIZE AND BOLT PENETRATION ALLOWANCE.
- 3: ALL TAPPED HOLES ARE UNIFIED NATIONAL COARSE, RIGHT HAND THREAD.
- 4: CONDUIT BOX MAY BE LOCATED ON EITHER SIDE OF MOTOR. CONDUIT OPENINGS MAY BE LOCATED IN STEPS OF 90° REGARDLESS OF LOCATION. STANDARD AS SHOWN WITH CONDUIT OPENING DOWN.
- 5: LARGEST MOTOR WIDTH.
- 6: TOLERANCES SHOWN ARE IN INCHES ONLY.

TOLERANCES	
FACE RUNOUT	.004 T.I.R.
PERMISSIBLE ECCENTRICITY OF MOUNTING RABBET	.004 T.I.R.
PERMISSIBLE SHAFT RUNOUT	.002 T.I.R.
FOR IEEE841 SHAFT RUNOUT	.001 T.I.R.

07-2808/A

**Nidec Motor Corporation**  
St. Louis, Missouri

INFORMATION DISCLOSED ON THIS DOCUMENT IS CONSIDERED PROPRIETARY AND SHALL NOT BE REPRODUCED OR DISCLOSED WITHOUT WRITTEN CONSENT OF NIDEC MOTOR CORPORATION



ISSUED BY  
**A. HINGANKAR**  
APPROVED BY  
**R. KING**

IHP\_DP\_NMCA (MAR-2011) SOLIDEDGE