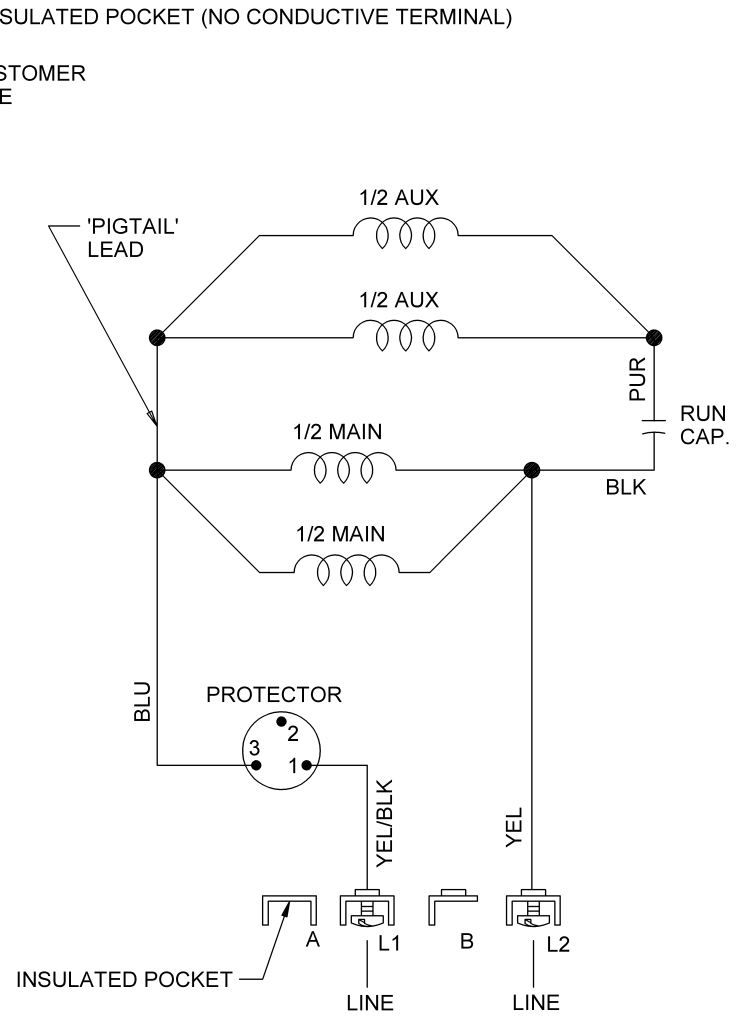
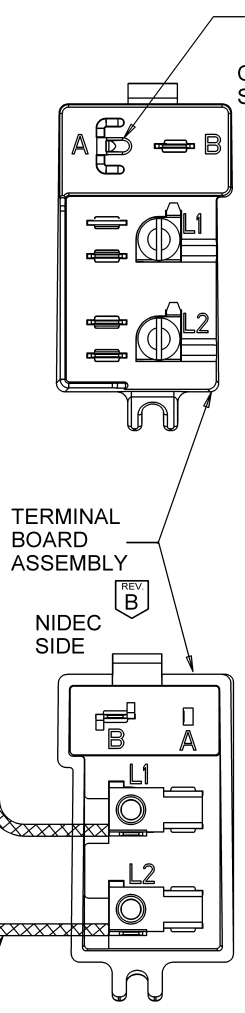
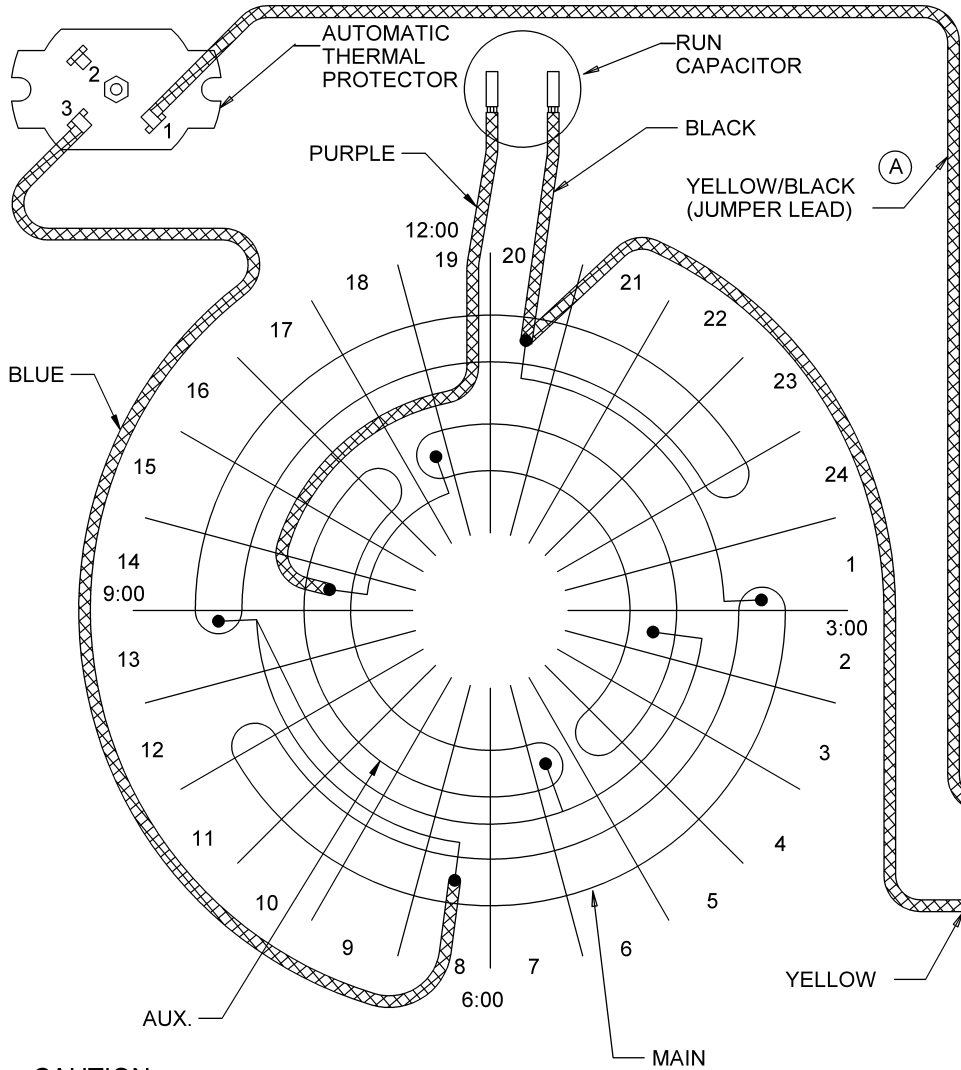


VIEWING LEAD END



ROTATION: CW LEAD END

K63, 2P, SINGLE VOLT, NON-REV

CAUTION: AUX SHIFTED 1 SLOT
CCW-LEAD END.
(PARALLEL MAIN POLES)
(PARALLEL AUX POLES)

REFER TO SEIM 24-1

ITEMS AND MATERIALS SPECIFIED HEREIN MUST COMPLY WITH THE EUROPEAN REDUCTION OF HAZARDOUS SUBSTANCES (ROHS 2) DIRECTIVE 2011/65/EU REGULATIONS (EC) NO. 1907/2006 ("REACH") AS OF 1 JUNE 2007 AND ALL SUBSEQUENT UPDATES. PLEASE REFER TO THE OFFICIAL EU DOCUMENTS FOR COMPLETE DEFINITION, RESTRICTIONS, AND LIMITS FOR EACH SUBSTANCE.

NIDEC CONFIDENTIAL
NIDEC MOTOR CORPORATION 24-Jan-14

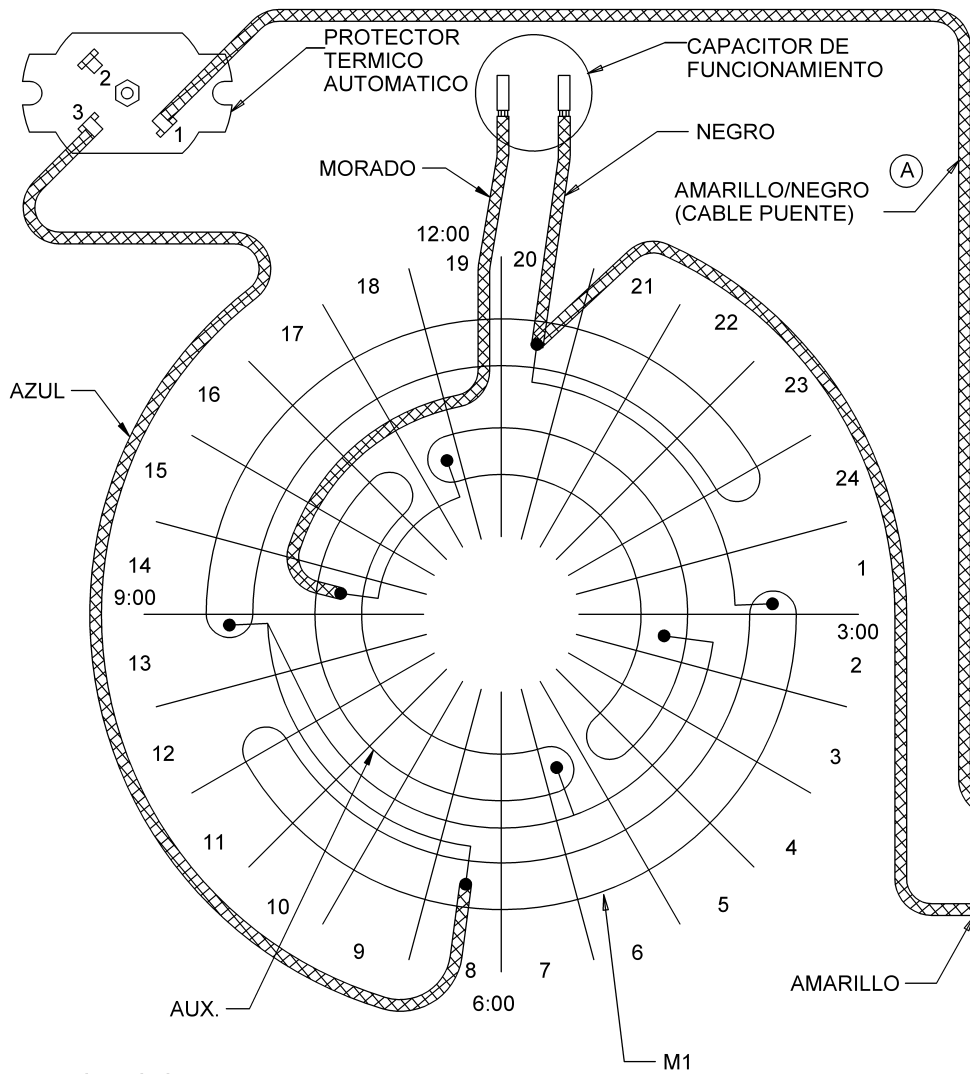
REVISION DESCRIPTION FOR: MISC	SCALE	UNITS	TITLE
STL0114-00 UPDATED "EMERSON" TO "NIDEC".	NONE	INCHES	DIAGRAM OF CONNECTIONS
MATERIAL:	TOLERANCES ON DIMENSIONS (UNLESS OTHERWISE SPECIFIED)		ISSUED BY
	INCHES	mm	R. KING
	± .015		APPROVED BY
			J. HAGENE
	ANGLES X°= ±1°		REVISION DATE
			24-JAN-14

CODE	DWG NO.
D04	739749

ISSUED BY	APPROVED BY	REVISION DATE
R. KING	J. HAGENE	24-JAN-14
REV	SHEET NUMBER	DWG SIZE
B	1 OF 2	B

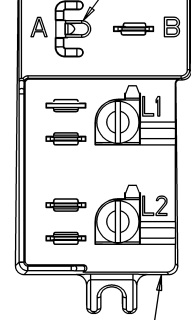
NIDEC MOTOR CORPORATION	
--------------------------------	--

VISTA LADO CABLES



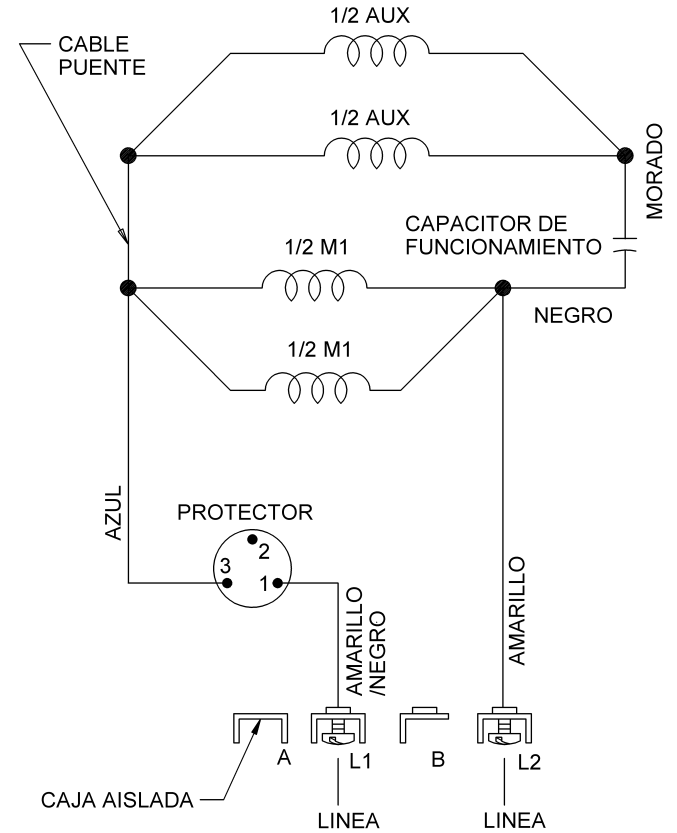
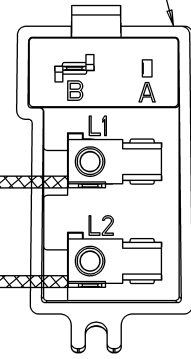
CAJA AISLADA (SIN TERMINAL)

LADO CLIENTE



ENSAMBLE DE TABLILLA DE TERMINAL

LADO NIDEC



ROTACION: CW LADO CABLES
K63, 2P, VOLTAJE SENCILLO, NO REVERSIBLE

PRECAUCION: AUX GIRADO 1 SLOT CCW-LEAD END.
(POLOS EN PARALELO M1)
(POLOS EN PARALELO AUX)

ITEMS AND MATERIALS SPECIFIED HEREIN MUST COMPLY WITH THE EUROPEAN REDUCTION OF HAZARDOUS SUBSTANCES (ROHS 2) DIRECTIVE 2011/65/EU, REGULATIONS (EC) NO. 1907/2006 ("REACH") AS OF 1 JUNE 2007 AND ALL SUBSEQUENT UPDATES. PLEASE REFER TO THE OFFICIAL EU DOCUMENTS FOR COMPLETE DEFINITION, RESTRICTIONS, AND LIMITS FOR EACH SUBSTANCE.

NIDEC CONFIDENTIAL
NIDEC MOTOR CORPORATION 24-Jan-14

REVISION DESCRIPTION FOR: MISC
STL0114-00 UPDATED "EMERSON" TO "NIDEC".

MATERIAL:

SCALE: NONE
UNITS: INCHES
TOLERANCES ON DIMENSIONS (UNLESS OTHERWISE SPECIFIED):
INCHES: ± .015
mm
ANGLES: X°= ±1°

TITLE: **DIAGRAM OF CONNECTIONS**

ISSUED BY: R. KING
APPROVED BY: J. HAGENE
REVISION DATE: 24-JAN-14

CODE: D04
DWG NO.: 739749

NIDEC MOTOR CORPORATION

REVISION DATE: 24-JAN-14

REV: B
SHEET NUMBER: 2 OF 2
DWG SIZE: B