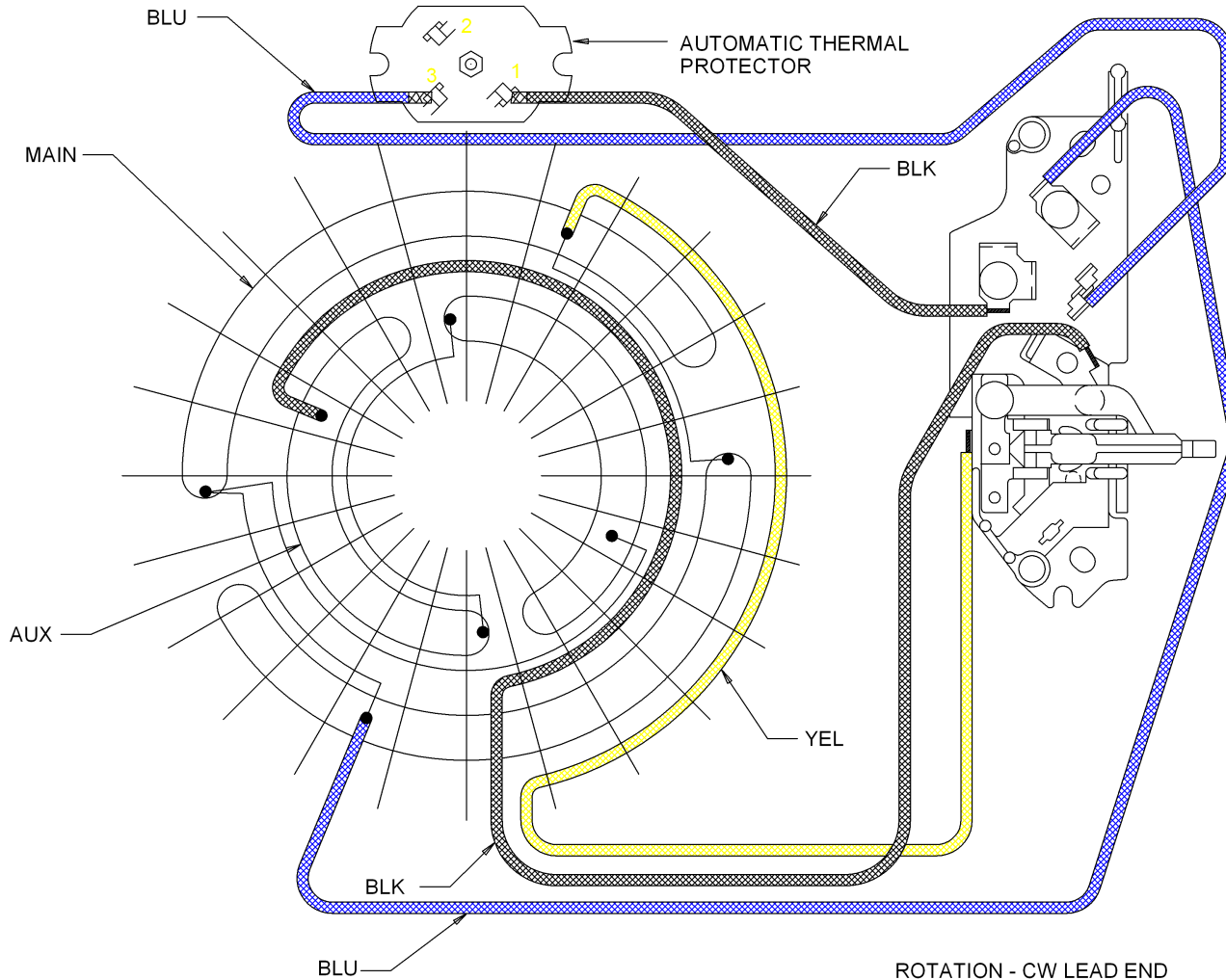
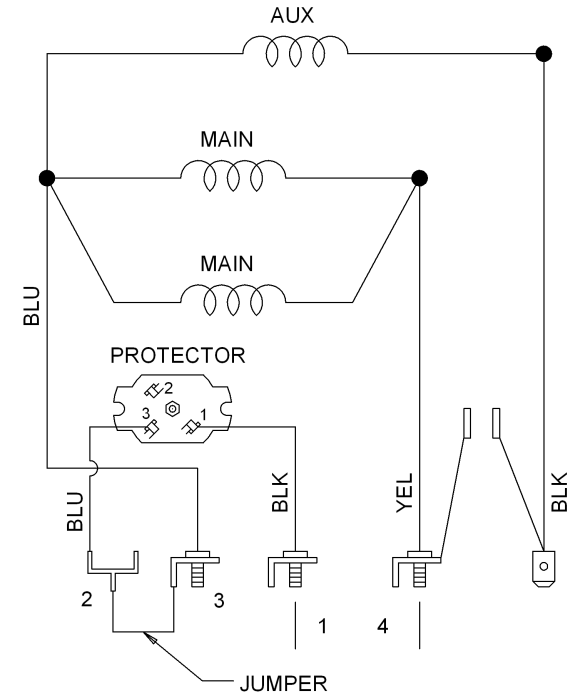


VIEWING LEAD END



ROTATION - CW LEAD END



S2P SINGLE VOLT NON-REV W/PROT

REFER TO SEIM 24-1

REV A

REVISION DESCRIPTION FOR: C8396-04 UPDATED BACKGROUND FROM EMERSON TO NIDEC. CONVERTED DRAWING FROM MICROSTATION TO SOLID EDGE		SCALE: NONE UNITS: INCHES	TOLERANCES ON DIMENSIONS (UNLESS OTHERWISE SPECIFIED): INCHES: .XX = ± .01 .XXX = ± .005 ANGLES: X° = ± 1°	TITLE: DIAGRAM OF CONNECTIONS	NIDEC MOTOR CORPORATION
MATERIAL:		ISSUED BY: R. GUZMAN CODE: D04	APPROVED BY: J.I. SALAZAR DWG NO.: 332534	REVISION DATE: 24-SEP-13	REV: A SHEET NUMBER: 1 OF 1 DWG SIZE: B

NIDEC CONFIDENTIAL
NIDEC MOTOR CORPORATION 24-Sep-13

MUST BE COMPLIANT TO RoHS DIRECTIVE EU 2002/95/REC AND REGULATION EC 1907/2006 (REACH) AS AMENDED.

SOLIDEDGE

NMCB (MAR-2011)