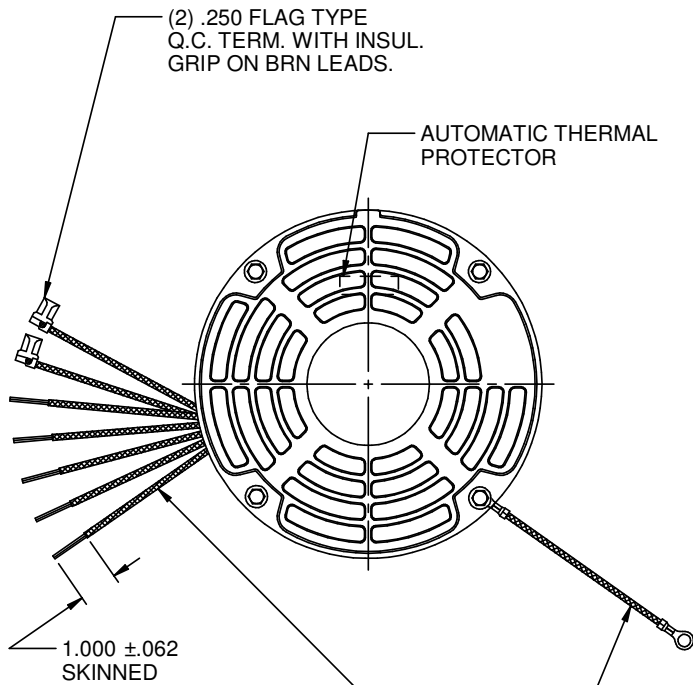
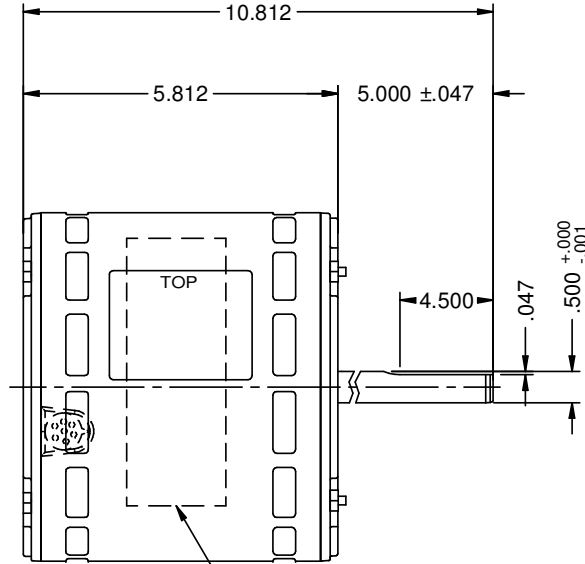


MODEL	REF	CUSTOMER	CUSTOMER PN	HP	VOLTS	AMPS	HZ	RPM	ROTATION	DESCRIPTION / REMARKS
K55HXGWN-4594		WHOLESALE-HAC	6452	3/4	115	11.2	60	1075/4SPD	CCW LEAD END	

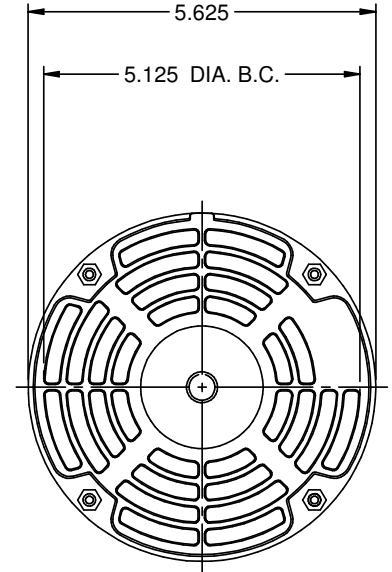


7 LEADS, #18, .031 THICK INSUL. TO EXTEND BEYOND MOTOR.
 WHITE=36.000+3-0, BLACK=36.000 +3-0
 YELLOW=36.000+3-0, ORANGE=36.000 +3-0
 RED=36.000+3-0 & (2) BROWN=12.000+2-0

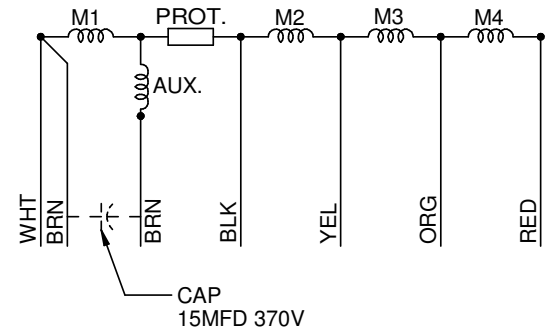
#16 GREEN GROUND LEAD TO BE 9±.250 BETWEEN CENTERS OF TERMS. TERM TO FIT #8 SCREW



WARNING LABEL



COLOR CODE
 WHITE = COMMON
 BLACK = HIGH
 YELLOW = MED HIGH
 ORANGE = MED LOW
 RED = LOW
 2-BROWN = CAPACITOR



NIDEC MOTOR CORPORATION 18-Sep-18

REFER TO S.E.I.M. 24-1

NEW DRAWING CREATED.	REVISION RECORD FOR: ECO E32155
ISSUED BY: I. GUTIERREZ	ENGINEER APPROVED: P. RODRIGUEZ

DIMENSIONS ARE FOR REFERENCE ONLY
 UNLESS TOLERANCE IS SPECIFIED

NIDEC MOTOR CORPORATION			
INFORMATION DISCLOSED ON THIS DOCUMENT IS CONSIDERED PROPRIETARY AND SHALL NOT BE REPRODUCED OR DISCLOSED WITHOUT WRITTEN CONSENT OF NIDEC MOTOR CORPORATION			REVISION DATE: 11-OCT-18
TITLE: CUSTOMER DETAIL DRAWING	CODE: V02	ITEM NO.: 822735	REV: --
		SHEET NUMBER: 1 OF 3	DWG SIZE: B