

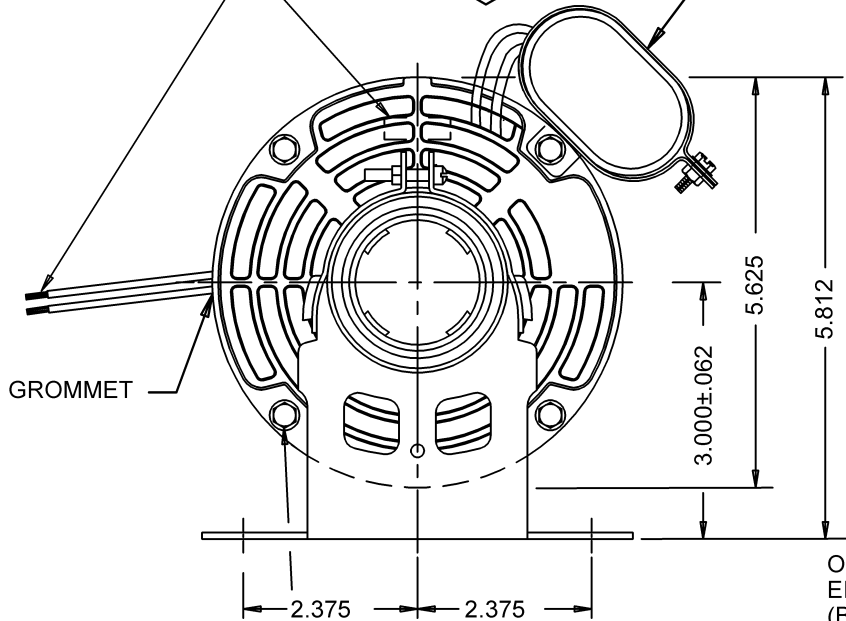
2 LEADS, #18, .031 THICK INSUL.
TO EXTEND BEYOND MOTOR
BLK.=48.000 +3 -0, BLK.=48.000 +3 -0
TO HAVE 1/2" STRIPPED TERMINATION.

NOTE: BASE CLAMP ASSEMBLIES
TO BE SHIPPED DETACHED.

AUTOMATIC THERMAL
PROTECTOR

CAPACITOR

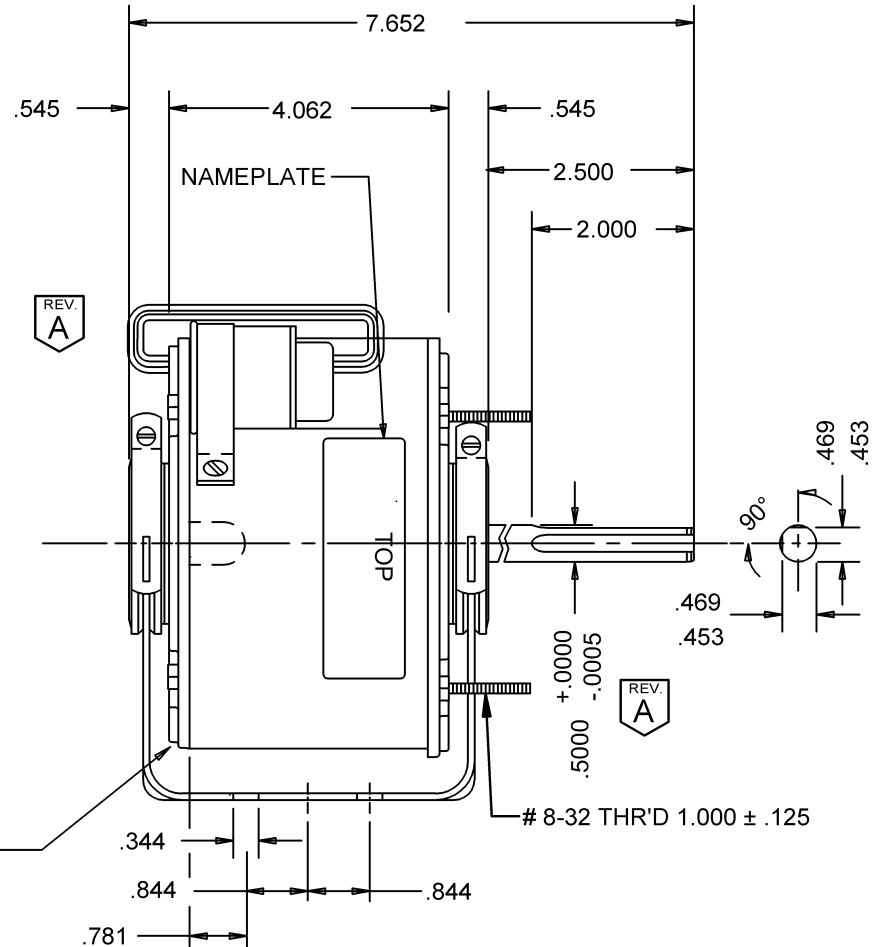
REV.
A



OPEN
END SHIELDS
(BOTH ENDS)

NOTE: MOTOR TO BE MOUNTED
IN A HORIZONTAL
POSITION ONLY

STUD FOR MOTOR TO BASE
GROUND LEAD ASSEMBLY.



CAPACITOR
5 MFD, 370 VAC

NIDEC MOTOR CORPORATION 27-Jan-14

MODEL	REF	CUSTOMER	HP	VOLTS	AMPS	HZ	RPM	ROTATION	CUSTOMER PN
K55HXPUE-1678	C37119	WHOLESALE HAC	1/6	208-230	0.9	50/60	1550	CW. LEAD END	6128

SHEET NUMBER	REV	REVISION RECORD FOR:
1 OF 1	A	C9567-00
		ADDED CAPACITOR LEADS
		UPDATED DIMENSION
REVISION DATE		
27-JAN-14		

INFORMATION DISCLOSED ON THIS DOCUMENT
IS CONSIDERED PROPRIETARY AND SHALL NOT BE
REPRODUCED OR DISCLOSED WITHOUT WRITTEN
CONSENT OF NIDEC MOTOR CORPORATION

**NIDEC MOTOR
CORPORATION**

ALL DIMENSIONS ARE FOR REFERENCE ONLY UNLESS TOLERANCE IS GIVEN

ISSUED BY	REVIEWED BY	ENGINEER APPROVED
H. PENA	M. LARGENT	M. LARGENT

TITLE	CODE	ITEM NO.	SIZE
ASSEMBLED VIEW	V01	798021	A