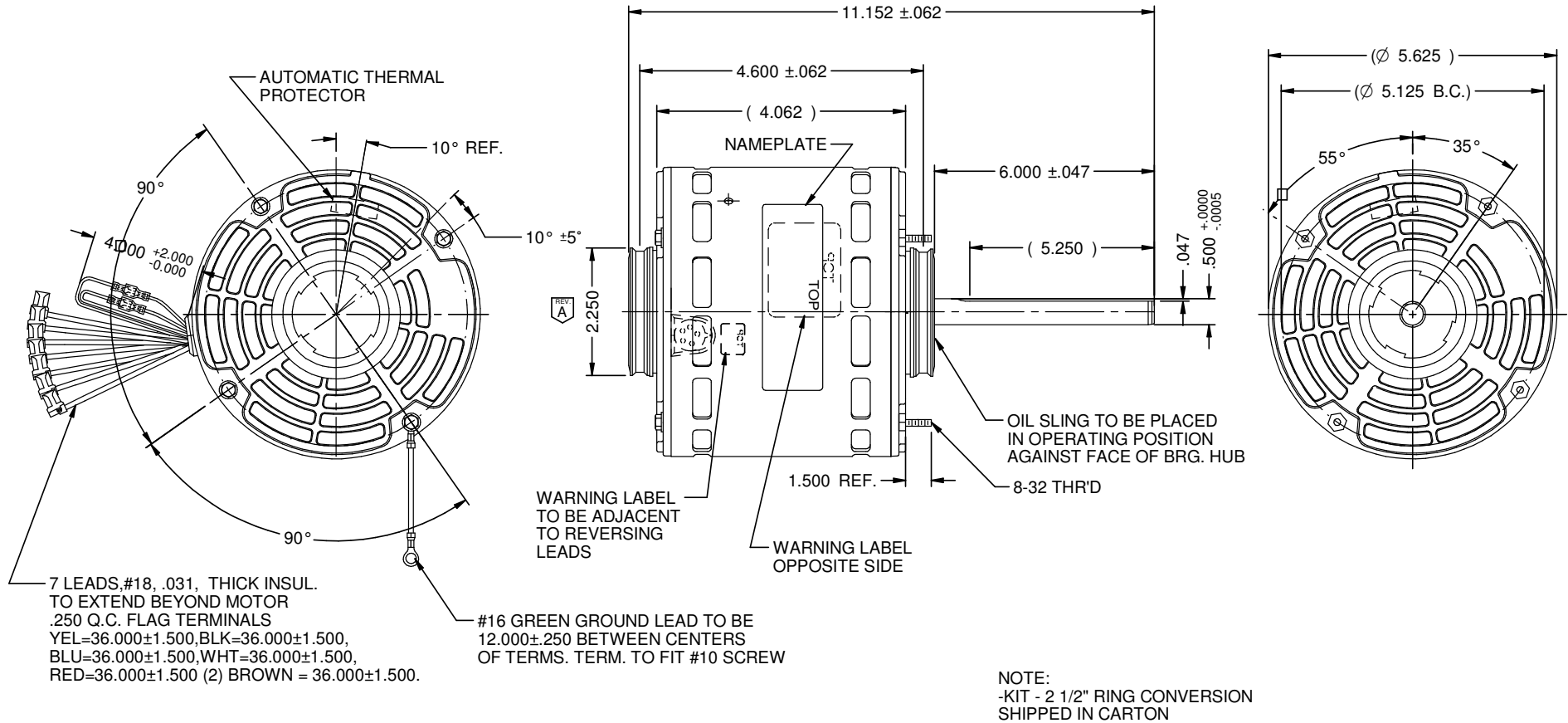


MODEL	REF	CUSTOMER	HP	VOLTS	AMPS	HZ	RPM	ROTATION	CUSTOMER PT. NO.	DESCRIPTION / REMARKS
K55HXKCN-9436		STANDARD	1/6	115	2.2	60	1075/4 SPD	CCW LEAD END REV	5825	



NIDEC MOTOR CORPORATION 09-Jun-20

REFER TO S.E.I.M. 24-1

REVISION RECORD FOR: E37246	
UPDATED HUB DIMENSION TO 2.25	
ISSUED BY: D. VALLE	ENGINEER APPROVED: M. DE LEON

DIMENSIONS ARE FOR REFERENCE ONLY  
UNLESS TOLERANCE IS SPECIFIED

<b>NIDEC MOTOR CORPORATION</b>			
INFORMATION DISCLOSED ON THIS DOCUMENT IS CONSIDERED PROPRIETARY AND SHALL NOT BE REPRODUCED OR DISCLOSED WITHOUT WRITTEN CONSENT OF NIDEC MOTOR CORPORATION			
TITLE		CODE	ITEM NO.
CUSTOMER DETAIL DRAWING		V02	824076
		REV	SHEET NUMBER
		A	1 OF 3
		REVISION DATE: 09-JUN-20	
		DWG SIZE B	