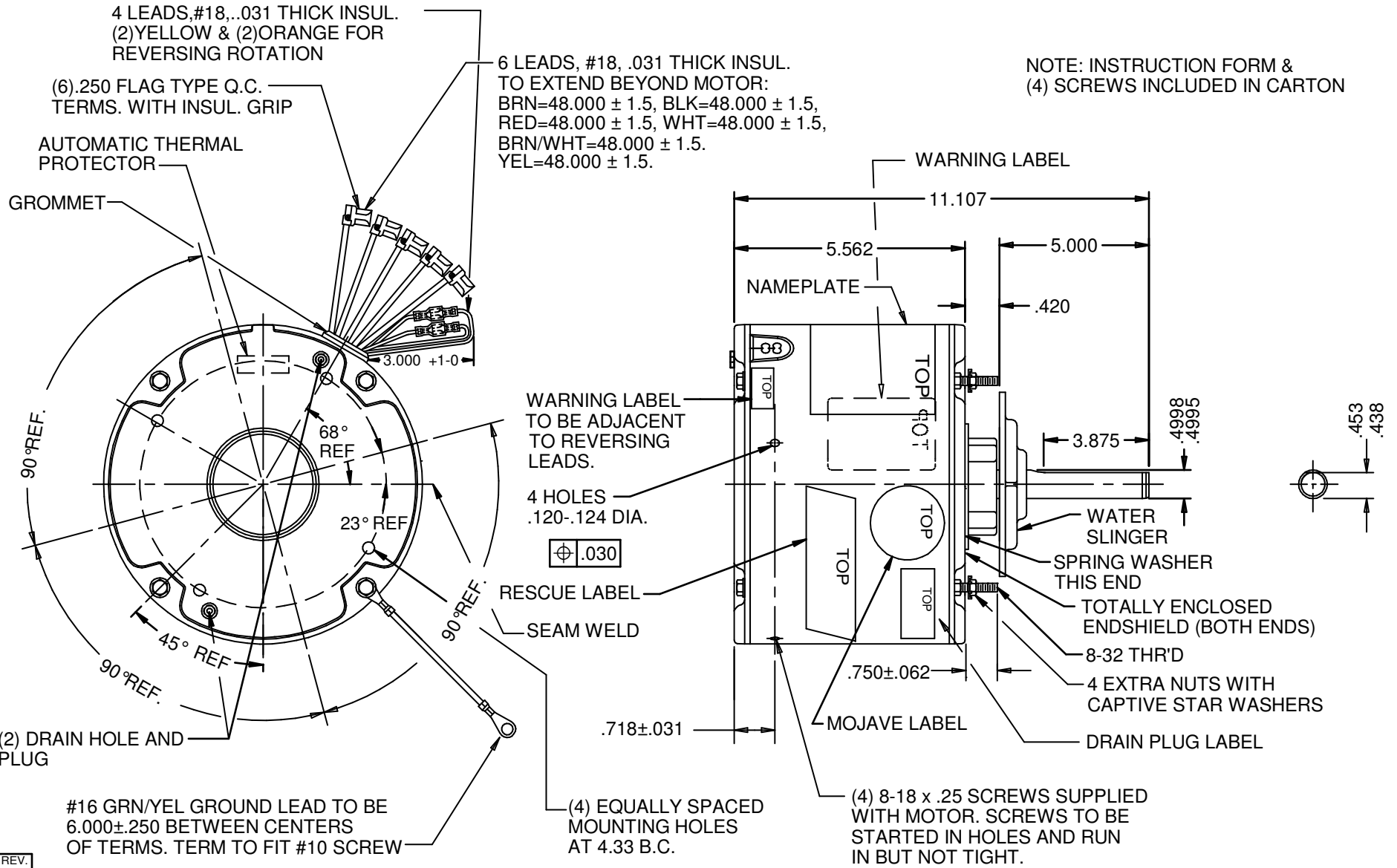


NOTE: INSTRUCTION FORM &
(4) SCREWS INCLUDED IN CARTON



REV.
H

NIDEC MOTOR CORPORATION 04-Jan-19

MODEL	REF	CUSTOMER	HP	VOLTS	AMPS	HZ	RPM	ROTATION	CUSTOMER PN
K55HXWKT-1115	A28510	WHOLESALE - HAC	1/2-1/6	460	1.3	60	1075/2SPD	CCW LEAD END REV	5480H

SHEET NUMBER	REV	REVISION RECORD FOR:
1 OF 1	H	E33364
		CHANGE PROTECTOR CODE FROM ZZ TO HX
REVISION DATE		
04-JAN-19		

INFORMATION DISCLOSED ON THIS DOCUMENT IS CONSIDERED PROPRIETARY AND SHALL NOT BE REPRODUCED OR DISCLOSED WITHOUT WRITTEN CONSENT OF NIDEC MOTOR CORPORATION

ALL DIMENSIONS ARE FOR REFERENCE ONLY UNLESS TOLERANCE IS GIVEN

NIDEC MOTOR CORPORATION

ISSUED BY	REVIEWED BY	ENGINEER APPROVED
E. GONZALEZ	J. RICE	B. GAITAN

TITLE	CODE	ITEM NO.	SIZE
ASSEMBLED VIEW	V01	777805	A