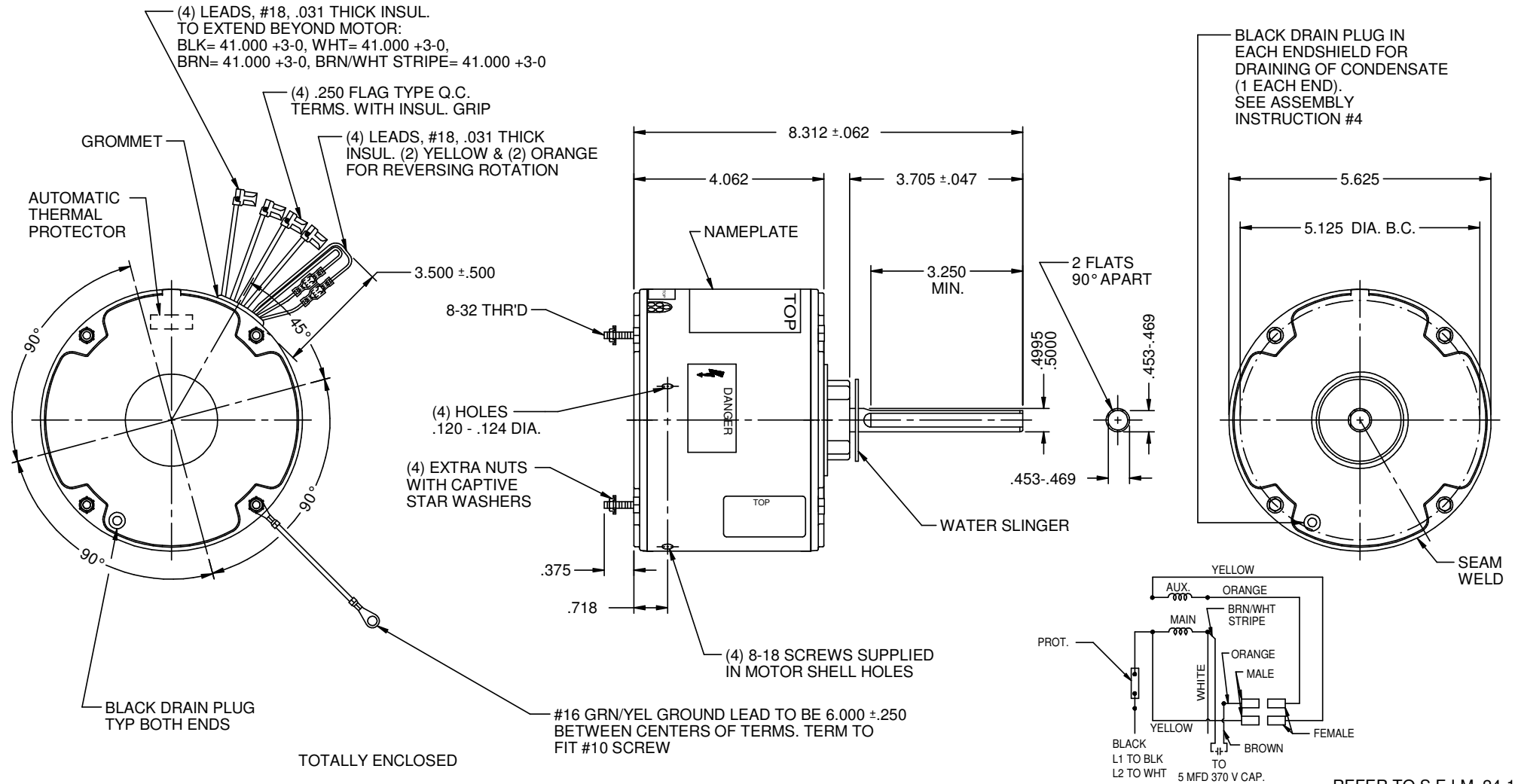


MODEL	REF.	CUSTOMER	HP	VOLTS	AMPS	HZ	RPM	ROTATION	CATALOG NO.	DESCRIPTION / REMARKS
K55HXSSD-5455		STANDARD	1/3	208-230	2.0	60	1075	CCW LEAD END REV	5455	



NIDEC MOTOR CORPORATION 25-May-17

REFER TO S.E.I.M. 24-1

CREATED DRAWING.	REVISION RECORD FOR:	ECO E28698
ISSUED BY:	ENGINEER APPROVED:	
G. MEDINA	H. NAVARRO	

DIMENSIONS ARE FOR REFERENCE ONLY

UNLESS TOLERANCE IS SPECIFIED

NIDEC MOTOR CORPORATION

INFORMATION DISCLOSED ON THIS DOCUMENT IS CONSIDERED PROPRIETARY AND SHALL NOT BE REPRODUCED OR DISCLOSED WITHOUT WRITTEN CONSENT OF NIDEC MOTOR CORPORATION

REVISION DATE: 17-MAY-17

TITLE	CODE	ITEM NO.	REV	SHEET NUMBER	DWG SIZE
CUSTOMER DETAIL DRAWING	V02	815665	-	1 OF 3	B