

MODEL	REF	CUSTOMER	CAT. NO.	HP	VOLTS	AMPS	HZ	RPM	ROTATION	DESCRIPTION / REMARKS
K55HXTHK-9039		STANDARD	4670	1	208-230	6.0	60	1100/4SPD	CCW LEAD END	K55 HUBLESS, S/A BRG, OPEN

(2) .250 NYLON INSULATED STRAIGHT TYPE Q.C. TERMS WITH INSUL GRIP.

#16 GREEN GROUND LEAD TO BE 8.750±.250 BETWEEN CENTERS OF TERMINALS. SERRATED TERMINAL TO FIT #10 SCREW.

2 LEAD #18, .031 THICK INSUL TO EXTEND BEYOND MOTOR (2)BRN=18.000 +2-0

SLOT #1 (COMMON CONNECTION) .188 MALE Q.C. TERM.

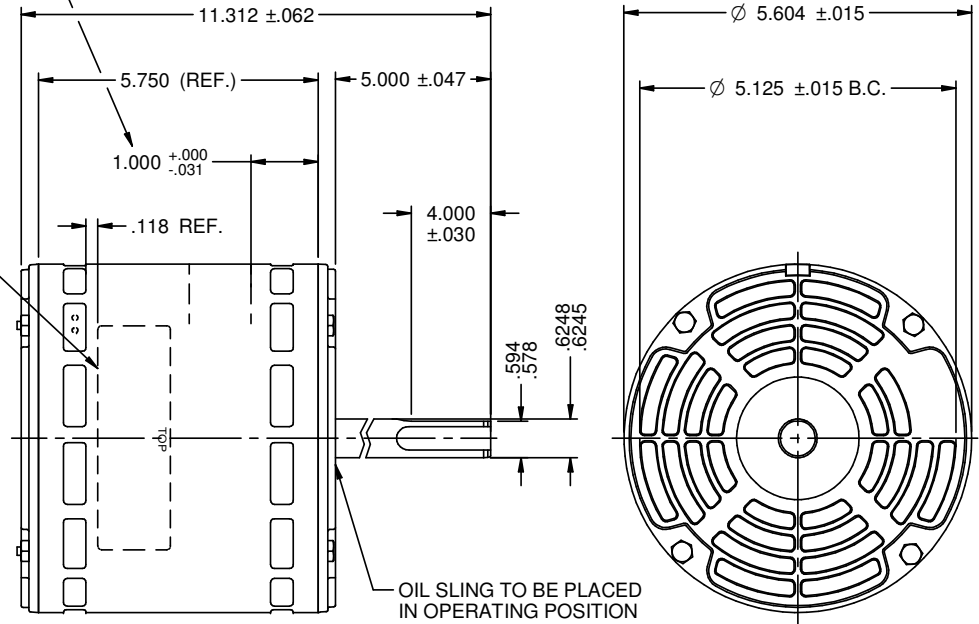
COM  
HI  
MH  
ML  
LOW

SLOTS #2 THRU #5 .250 MALE Q.C. TERM

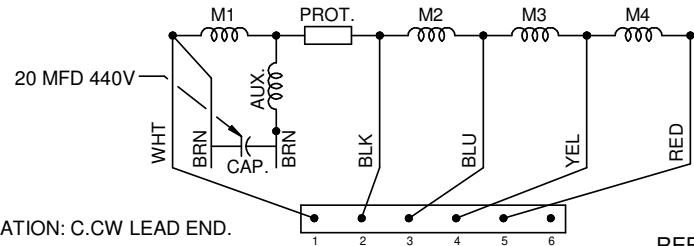
CONNECTION LABEL

STATOR CORE LOCATION.

NAMEPLATE



OIL SLING TO BE PLACED IN OPERATING POSITION AGAINST FACE OF BRG HUB.



ROTATION: C.C.W. LEAD END.

REFER TO S.E.I.M. 24-1

NIDEC MOTOR CORPORATION 20-Feb-19

REVISION RECORD FOR:	ECO E32251
NEW DRAWING CREATED.	
ISSUED BY:	I. GUTIERREZ
ENGINEER APPROVED:	D. TEJEDA

DIMENSIONS ARE FOR REFERENCE ONLY  
UNLESS TOLERANCE IS SPECIFIED

**NIDEC MOTOR CORPORATION**

INFORMATION DISCLOSED ON THIS DOCUMENT IS CONSIDERED PROPRIETARY AND SHALL NOT BE REPRODUCED OR DISCLOSED WITHOUT WRITTEN CONSENT OF NIDEC MOTOR CORPORATION

REVISION DATE: 19-JAN-19

TITLE	CODE	ITEM NO.	REV	SHEET NUMBER	DWG SIZE
CUSTOMER DETAIL DRAWING	V02	823942	--	1 OF 3	B