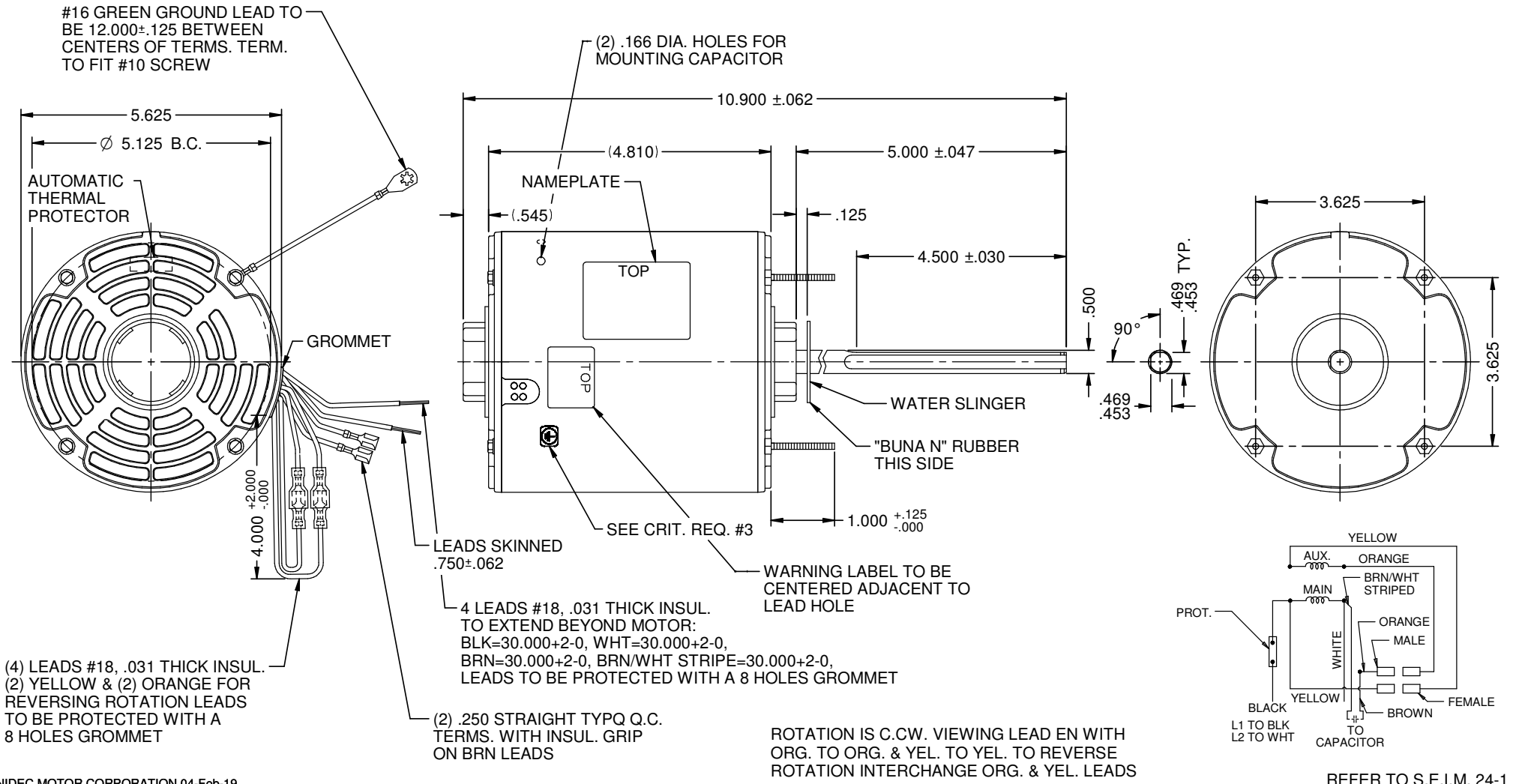


MODEL	REF	CUSTOMER	HP	VOLTS	AMPS	HZ	RPM	ROTATION	CUST. PT. NO.	DESCRIPTION / REMARKS
KA55HXSMK-1777	----	STANDARD	1/2	208-230	3.1	60	1075	C.CW LEAD END REV.	3852	



NIDEC MOTOR CORPORATION 04-Feb-19

REVISION RECORD FOR:	ECO: E32862
CREATED NEW DRAWING	
ISSUED BY:	F. GARCIA
ENGINEER APPROVED:	M. DE LEON

DIMENSIONS ARE FOR REFERENCE ONLY  
UNLESS TOLERANCE IS SPECIFIED

<b>NIDEC MOTOR CORPORATION</b>			
INFORMATION DISCLOSED ON THIS DOCUMENT IS CONSIDERED PROPRIETARY AND SHALL NOT BE REPRODUCED OR DISCLOSED WITHOUT WRITTEN CONSENT OF NIDEC MOTOR CORPORATION			
TITLE		CODE	ITEM NO.
CUSTOMER DETAIL DRAWING		V02	825070
REVISION DATE:		REV	SHEET NUMBER
04-FEB-19		--	1 OF 3
		DWG SIZE	
		B	SOLDEDGE

REFER TO S.E.I.M. 24-1