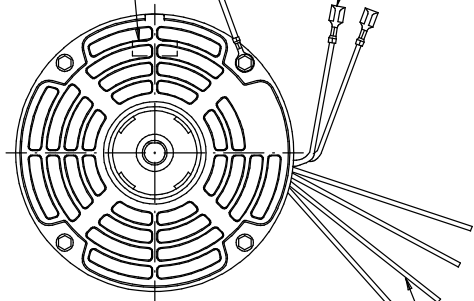


#16 GREEN GRD. LEAD TO BE 6.000±.250
ABETWEEN CENTERS OF TERMS. TERM. TO
FIT #10 SCREW.

AUTOMATIC
THERMAL
PROTECTOR

(2) .250 STRAIGHT Q.C. TERMS.
WITH INSUL. GRIP.

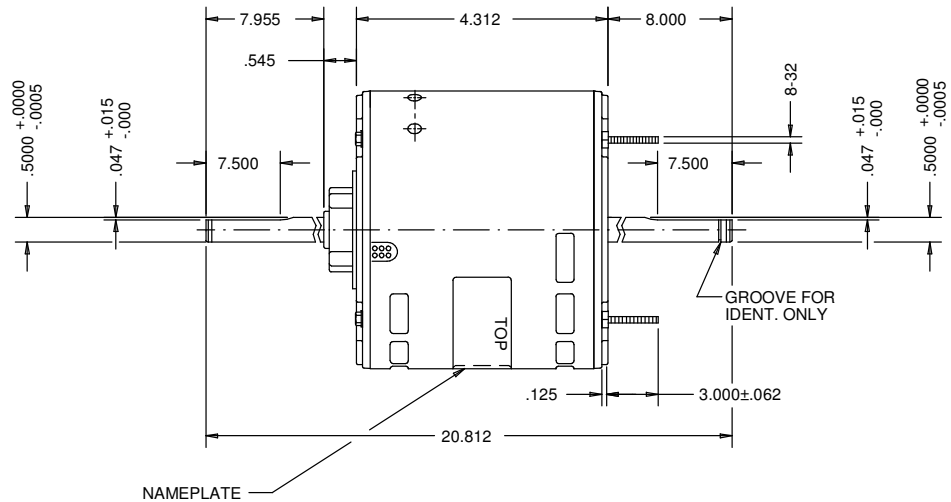


SKINNED .750±.062

6 LEADS, #18, .062 THICK INSUL.,
TO EXTEND BEYOND MOTOR

| | | | |
|-----------|----|-------------------|----|
| WHT(C)=20 | +2 | BLU(2)=20 | +2 |
| | -0 | | -0 |
| BLK(1)=20 | +2 | RED(3)=20 | +2 |
| | -0 | | -0 |
| BRN=20 | +2 | BRN/WHT STRIPE=20 | +2 |
| | -0 | | -0 |

LEADS TO BE PROTECTED
WITH A GROMMET



SHIPPED DETACHED

- 1-DUMMY ENDSHIELD 1-CAPACITOR-5MFD-370V
- 8-8-32 NUTS 1-CAPACITOR CLAMP
- 2-HUB RINGS 1-CAPACITOR CAP
- 4-OUTER HUB RINGS 2-10-32 SCREWS

| MODEL | REF | CUSTOMER | HP | VOLTS | AMPS | HZ | RPM | ROTATION | CUSTOMER PN | |
|-----------------------------------------------------------------|----------------------------------------|--------------------------------|-------------------------|-------|--------------------------------------------------------------------------------------------------------------------------------------------------------------|----|-------------|--------------------|-------------------------|--|
| K55HXWY-4915 | | STANDARD | 1/3 | 230 | 2.2 | 60 | 1625/3SPD | CCW LEAD END | 1887 | |
| SHEET NUMBER 1 OF 1 | REV B | REVISION RECORD FOR: C6402-00 | | | INFORMATION DISCLOSED ON THIS DOCUMENT IS CONSIDERED PROPRIETARY AND SHALL NOT BE REPRODUCED OR DISCLOSED WITHOUT WRITTEN CONSENT OF NIDEC MOTOR CORPORATION | | | | NIDEC MOTOR CORPORATION | |
| REVISION DATE | UPDATED ENGINEER APPROVED TO B. GAITAN | | | | | | | | | |
| 02-NOV-12 | | | | | | | | | | |
| ALL DIMENSIONS ARE FOR REFERENCE ONLY UNLESS TOLERANCE IS GIVEN | | | | | | | | | | |
| ISSUED BY R. MORALES | REVIEWED BY M. LARGENT | ENGINEER APPROVED B. GAITAN | TITLE ASSEMBLED VIEW | | | | CODE V01 | ITEM NO. 194483 | SIZE B | |