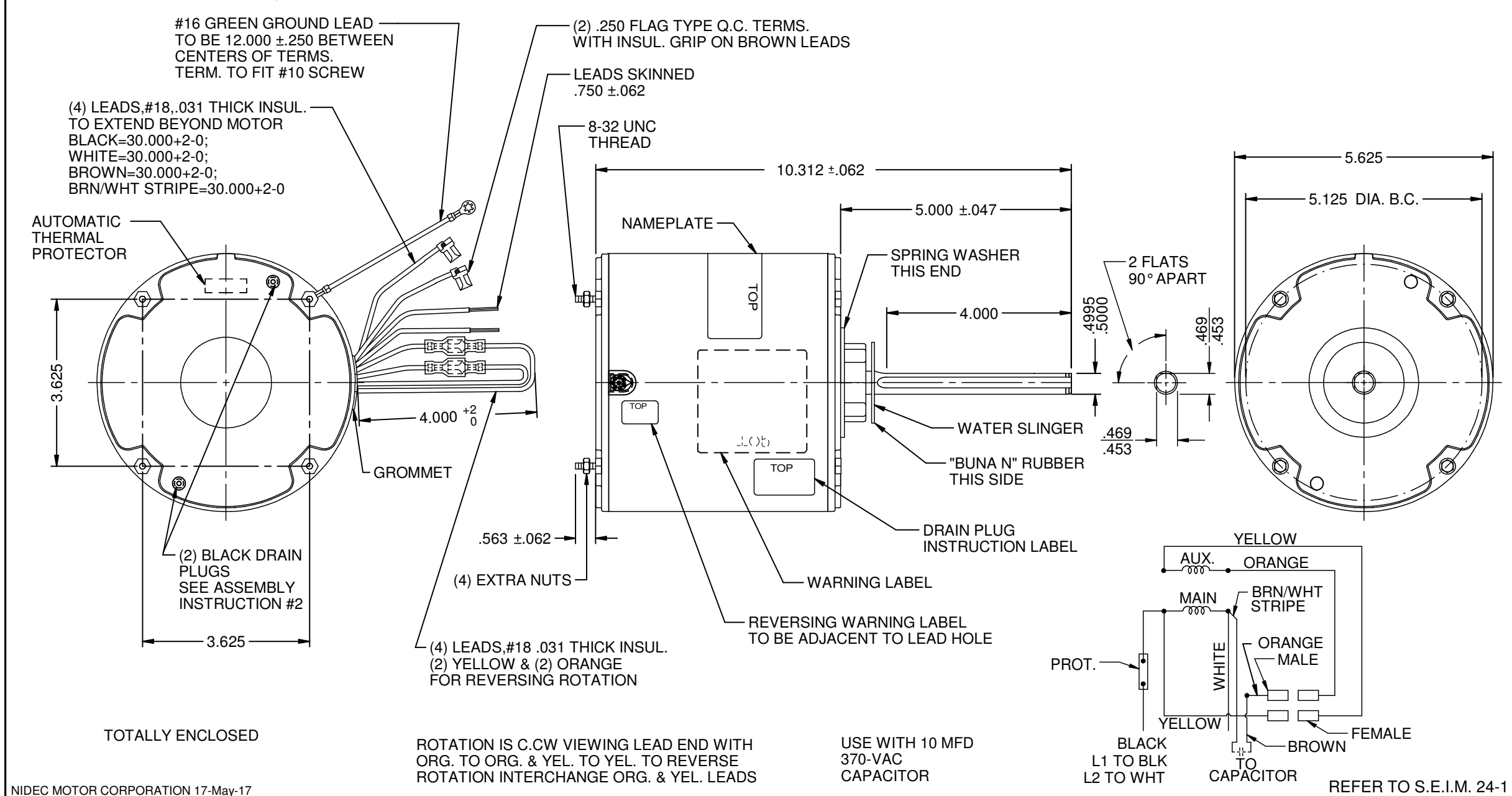


MODEL	REF.	CUSTOMER	HP	VOLTS	AMPS	HZ	RPM	ROTATION	CUSTOMER PART NO.	DESCRIPTION / REMARKS
K55HXMAD-0215	A30015	WHOLESALE HAC	1/2	208-230	3.1	60	1075	CCW LEAD END REV	1878	



NIDEC MOTOR CORPORATION 17-May-17

REVISION RECORD FOR:		ECO E28698
CREATED DRAWING.		
ISSUED BY:	G. MEDINA	ENGINEER APPROVED: H. NAVARRO

DIMENSIONS ARE FOR REFERENCE ONLY

UNLESS TOLERANCE IS SPECIFIED

NIDEC MOTOR CORPORATION				
INFORMATION DISCLOSED ON THIS DOCUMENT IS CONSIDERED PROPRIETARY AND SHALL NOT BE REPRODUCED OR DISCLOSED WITHOUT WRITTEN CONSENT OF NIDEC MOTOR CORPORATION				REVISION DATE: 17-MAY-17
TITLE	CODE	ITEM NO.	REV	SHEET NUMBER
CUSTOMER DETAIL DRAWING	V02	815644	-	1 OF 3
				DWG SIZE B