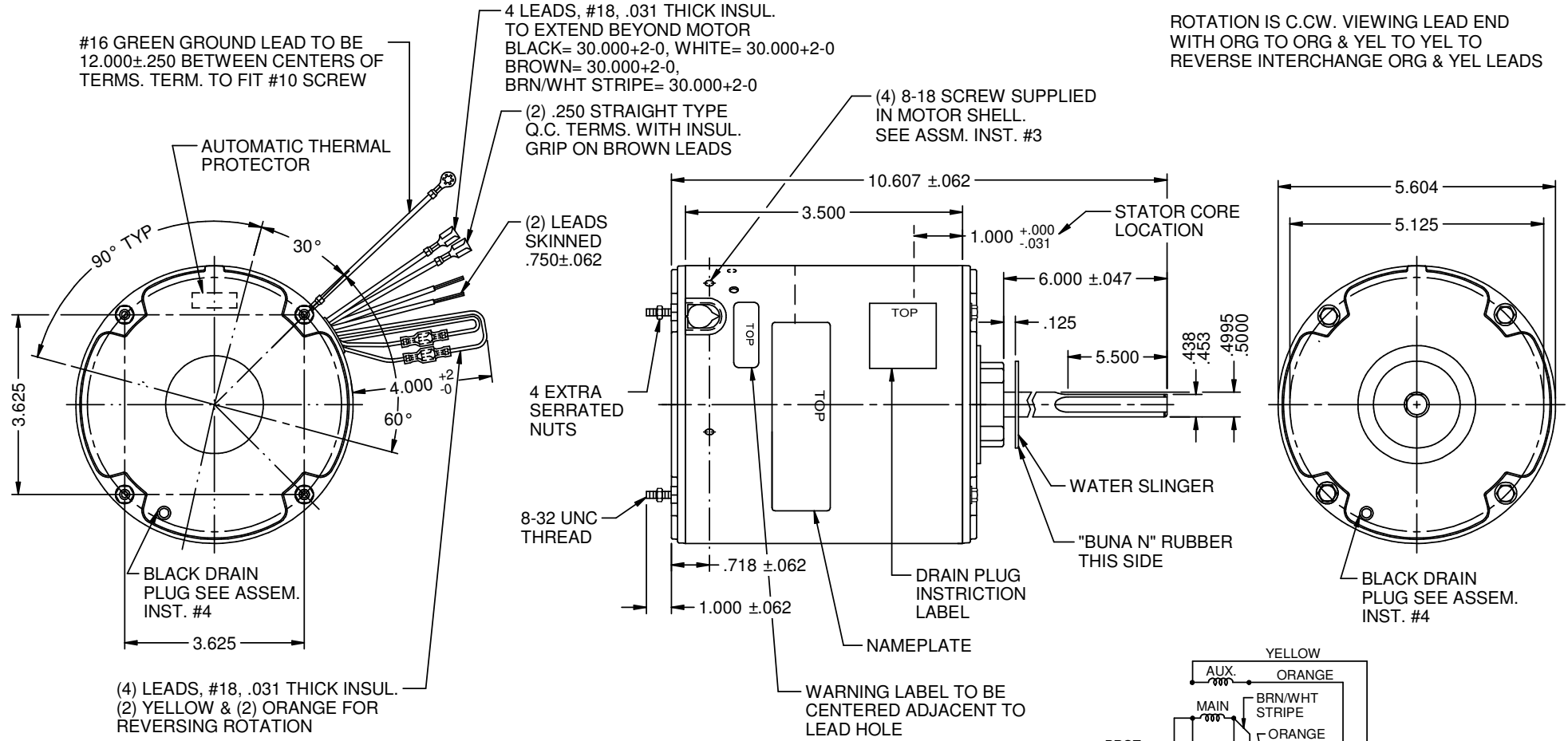


MODEL	REF	CUSTOMER	HP	VOLTS	AMPS	HZ	RPM	ROTATION	CAT. NO.	DESCRIPTION / REMARKS
K55HXCLM-1468	D35117-X2	WHOLESALE HAC	1/6	208-230	1.0	60	825	CCW LEAD END REV	1873	



NIDEC MOTOR CORPORATION 14-Jul-17

NEW DRAWING.	REVISION RECORD FOR:	E28787
ISSUED BY:	ENGINEER APPROVED:	
B. ANDRADE	H. NAVARRO	

DIMENSIONS ARE FOR REFERENCE ONLY
UNLESS TOLERANCE IS SPECIFIED

NIDEC MOTOR CORPORATION			
INFORMATION DISCLOSED ON THIS DOCUMENT IS CONSIDERED PROPRIETARY AND SHALL NOT BE REPRODUCED OR DISCLOSED WITHOUT WRITTEN CONSENT OF NIDEC MOTOR CORPORATION			
TITLE	CODE	ITEM NO.	REVISION DATE
CUSTOMER DETAIL DRAWING	V02	815988	07-JUN-17
			REV
			1 OF 3
			DWG SIZE
			B