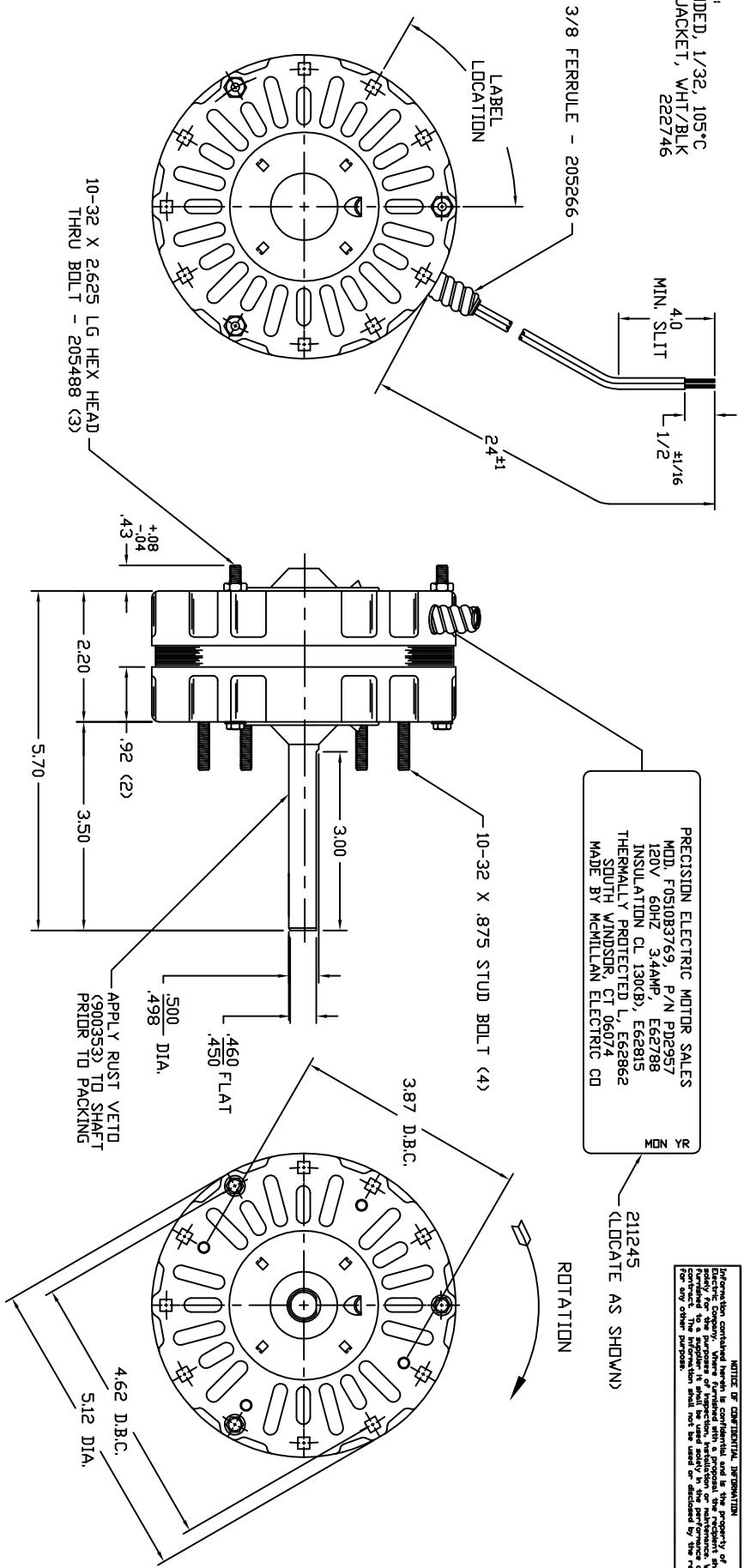


LEADWIRE:  
18-2, BONDED, 1/32, 105°C  
PLASTIC JACKET, WHI/BLK  
222746



PRECISION ELECTRIC MOTOR SALES  
MDD: F0510B3769, P/N PD2957  
120V 50HZ 3.4AMP, E62788  
INSULATION CL 130CB, E62815  
THERMALLY PROTECTED L, E62862  
SOUTH WINDSOR, CT 06074  
MADE BY McMILLAN ELECTRIC CO

NOTICE OF CONFIDENTIAL INFORMATION  
Information contained herein is confidential and is the property of McMILLAN Electric Company. It is to be used only for the purposes of inspection, installation or maintenance of the equipment. The information shall not be used or disclosed by the recipient for any other purpose.

.080 MAX. ENDPLOY

REV. 1:	3.00 FLAT WAS 1.00
REV. 2:	465006 (216 PACK) WAS 465005 (252 PACK)
REV. 3:	301388 WAS 300963
REV. 4, ECD-2349:	211245 WAS 210582.
REV. 5, ECD-4929:	UPDATE DIMENSIONS PER .025 CASE HEIGHT REDUCTION
REV. 6, ECD-6379:	ADD "RUST VETO" NOTE
REV. 7, ECD-6496:	UPDATE LABEL DATA
REV. 8, ECD-7484:	ADD "MADE BY McMILLAN."

6	9-3-14	PJD									
7	11-06-14	PJD									
8	6-6-16	PJD									
9											
10											
11											

NO.	DATE	BY	REVISIONS
1	5-28-08	ACR	
2	6-9-08	ACR	
3	6-10-08	ACR	
4	7-16-08	MLS	
5	6-29-12	PJD	

STATOR- 301388	PROTECTOR- 205764	VOLTS- 120
FRONT- 700267 (222747)	REF.- MS8006	FREQ.- 60 HZ.
BACK- 800004 (221042)		AMP- 3.4
SHAFT- 222748	CUST. NO- PD2957	SPEEDS- 1
ROTOR- 220039	FINISH- 900304 WHITE EPOXY	
PACKING- 465006 (216 PACK)		

**McMillan Electric Company**  
400 BEST ROAD  
WOODVILLE, WISCONSIN 54028

MOTOR OUTLINE  
PEMS, 6P SHD, .625 STK, 1 SPD  
SCALE 1=2  
DATE 5-19-08  
DRAWING NO. F0510B3769  
REV. 8