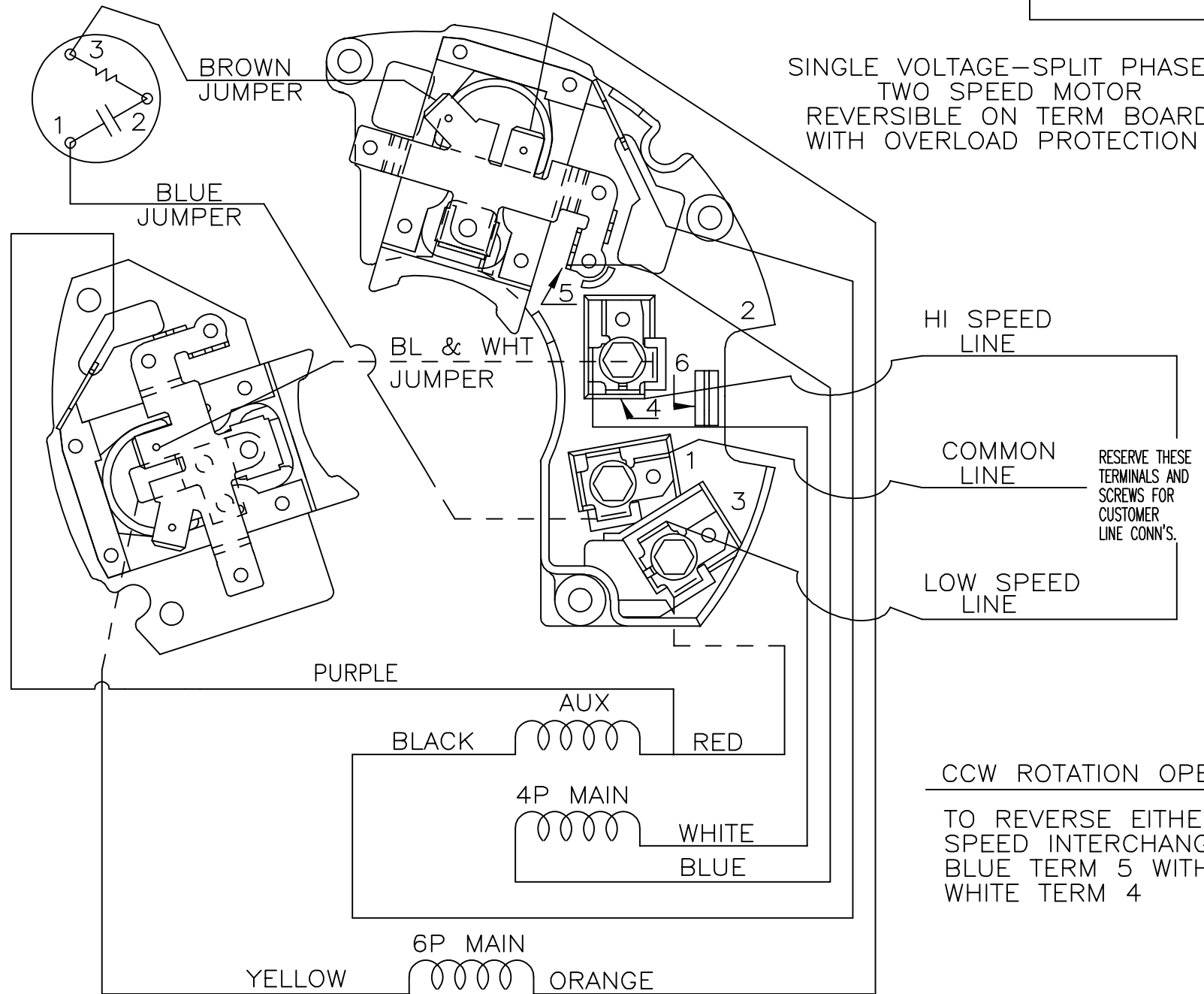
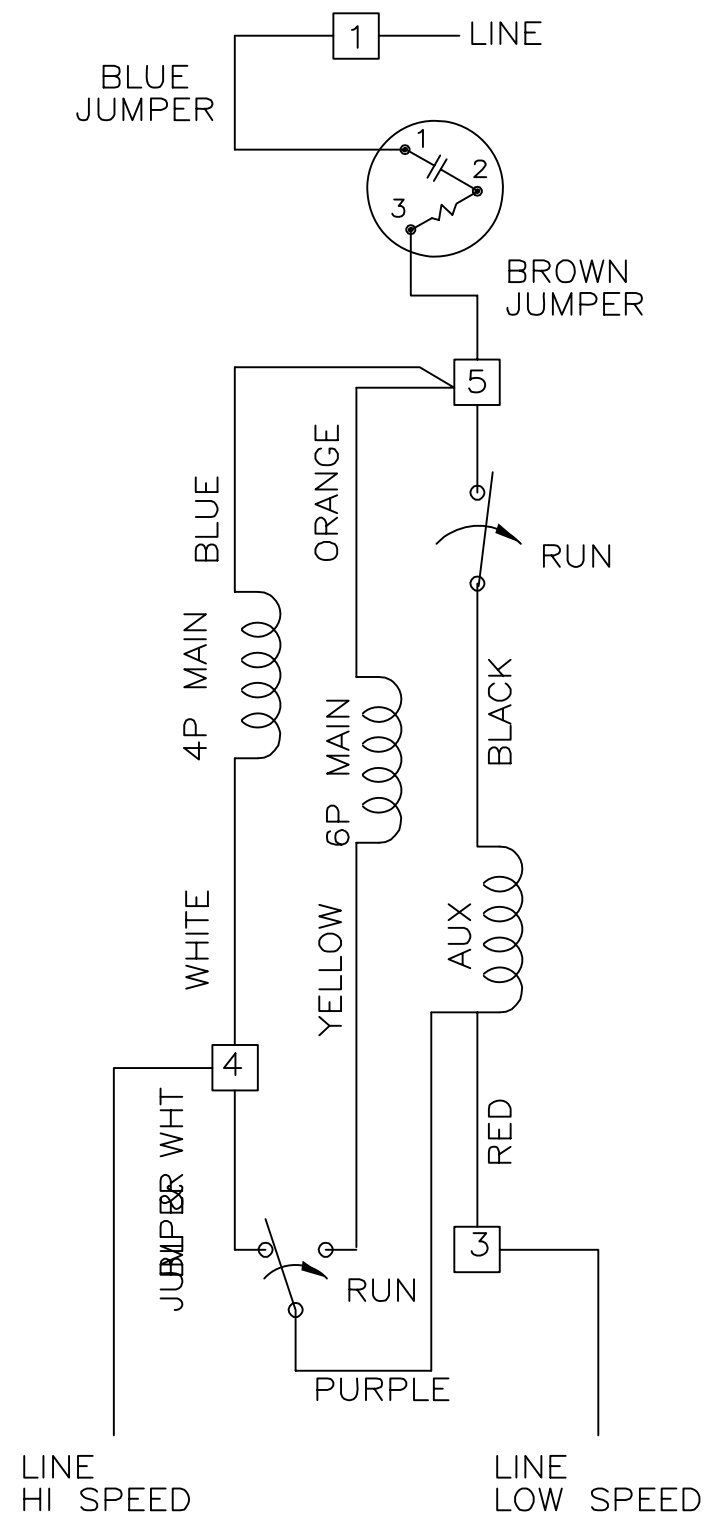


EE9005B



SINGLE VOLTAGE-SPLIT PHASE
TWO SPEED MOTOR
REVERSIBLE ON TERM BOARD
WITH OVERLOAD PROTECTION

HI SPEED LINE
COMMON LINE
RESERVE THESE TERMINALS AND SCREWS FOR CUSTOMER LINE CONN'S.
LOW SPEED LINE

CCW ROTATION OPE
TO REVERSE EITHER SPEED INTERCHANGE
BLUE TERM 5 WITH WHITE TERM 4

NOTE:
DASH LINES INDICATE LEADS CONNECTED TO MOTOR SIDE OF SWITCH

NO.	REVISION	BY & DATE	CHK	TOLERANCES UNLESS SPECIFIED		MARATHON ELECTRIC	DRAWN RM 12-03-1990		
				DEC.	INCHES				
3	UPDATED PER ECR-0036111	UD 12-19-13	BV	.X	±.1	TITLE CONNECTION DIAGRAM 48 FR. TWO SPEED	CHK ML 12-03-1990		
2	RE-ISSUED CN 6381	RM 12-03-90		.XXX	±.005		APPD GK 12-03-1990		
1	NEW DRAWING	RM 11-20-90		.XXXX	±.0005		SCALE 3=8		
				ANG	±1/2'	MAT'L.	REF		
						FINISH	FMF		
THIS DRAWING IN DESIGN AND DETAIL IS OUR PROPERTY AND MUST NOT BE USED EXCEPT IN CONNECTION WITH OUR WORK ALL RIGHTS OF DESIGN AND INVENTION ARE RESERVED THIS IS AN ELECTRONICALLY GENERATED DOCUMENT - DO NOT SCALE THIS PRINT				RFP	CAD FILE	EE9005B	SIZE A	DRAWING NO. EE9005B	REV. 03
				DIST					