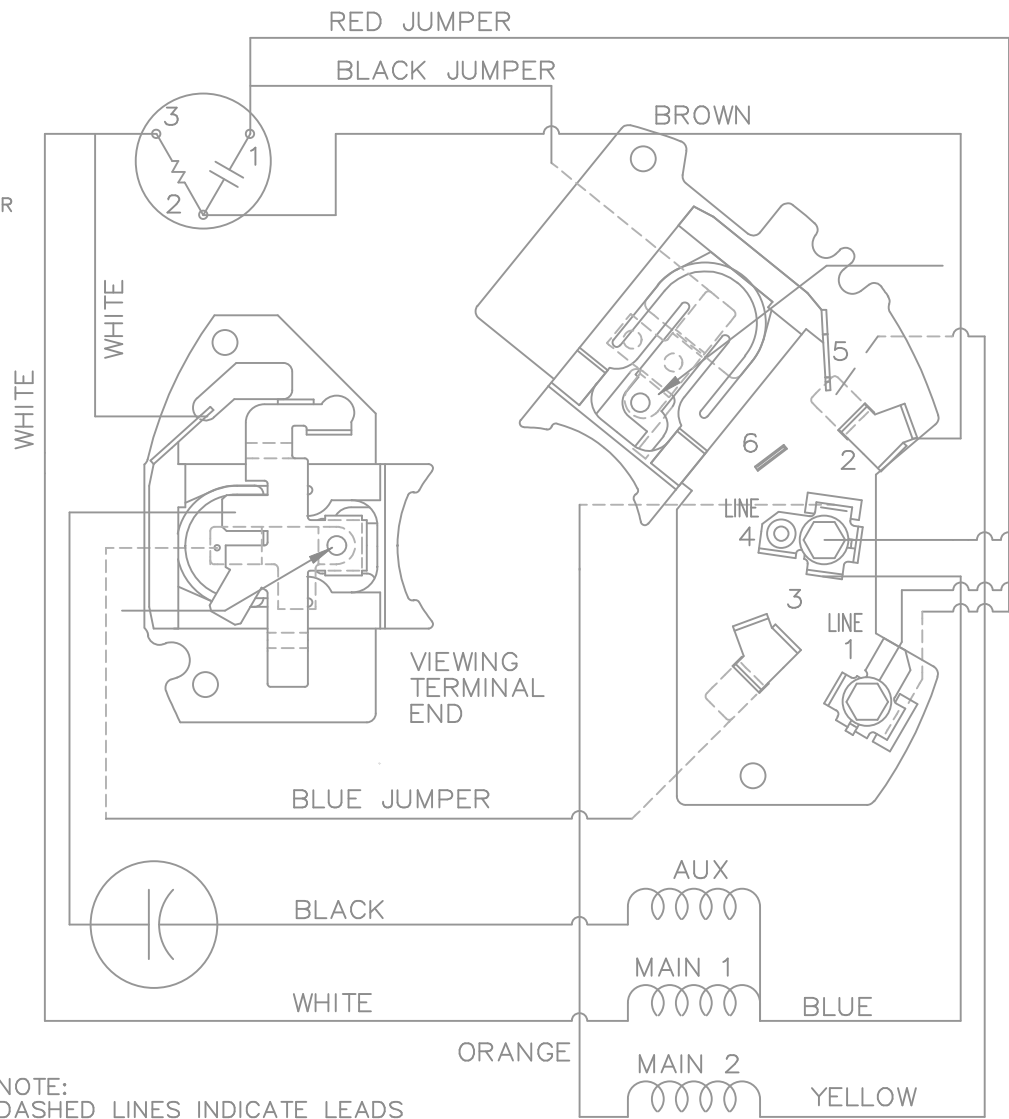
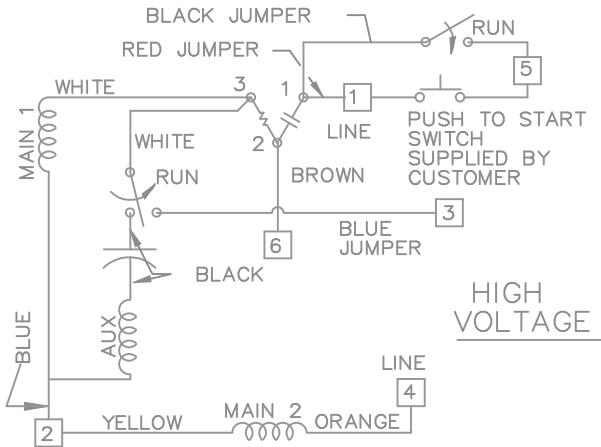


AT MOTOR RUNNING CONDITION CONTACTS ARE:

- NORMALLY CLOSED BETWEEN PROTECTOR AND BLUE JUMPER
- NORMALLY OPEN BETWEEN PROTECTOR AND CAPACITOR



NOTE: DASHED LINES INDICATE LEADS CONNECTED TO MOTOR SIDE OF SWITCH

AT MOTOR RUNNING CONDITION NORMALLY CLOSED CONTACTS BETWEEN TERMINAL 5 AND BLACK JUMPER

CONN. INSTRUCTIONS

- 1) TYPE OF CONNECTION
 - DUAL VOLTAGE
 - NON REVERSIBLE
 - CCW-OPE
 - CAPACITOR START
 - OVERLOAD PROTECTOR
 - TWO RUN CONTACTS FOR CONTROL LEADS TERM. 3 AND 5
- 2) LOW VOLTAGE SHOWN
 - FOR HIGH VOLTAGE PLACE BROWN TERM 2 TO TERM 6 AND BLUE TERM 4 TO TERM 2
- 3) CAUTION
 - LINE VOLTAGE APPEARS BETWEEN TERM 4 AND TERMS 3 OR 5 WHEN MOTOR IS AT RUNNING SPEED

7	ORANGE LEAD WAS TO FRONT OF SWITCH CN 12029	BW 07-02-1990	TOLERANCES UNLESS SPECIFIED			DRAWN PR 02-24-1987			
6	ORANGE LEAD WAS TO BACK SIDE OF SWITCH CN 11133	ML 07-17-1989	DEC.	INCHES		CHK FG 02-24-1987			
5	REVISED CAUTION NOTE CN 10514	BW 01-24-1989	.X	±.1	APPD DRN 05-22-1987	SCALE			
4	CLARIFY LOW & HIGH VOLTAGE	ML 03-28-1988	.XX	±.02	TITLE CONNECTION DIAGRAM	REF			
3	TERM NO. 5 CLARIFIED	GK 09-03-1987	.XXX	±.005	56-140 FR. - DUAL VOLTAGE CONTROL	FMF			
2	RED WAS ORANGE, WHITE WAS BLACK CN 8419	DP 05-27-1987	.XXXX	±.0005	MAT'L.	PREV			
NO.	REVISION	BY & DATE	CHK	ANG	FINISH				
THIS DRAWING IN DESIGN AND DETAIL IS OUR PROPERTY AND MUST NOT BE USED EXCEPT IN CONNECTION WITH OUR WORK ALL RIGHTS OF DESIGN AND INVENTION ARE RESERVED THIS IS AN ELECTRONICALLY GENERATED DOCUMENT - DO NOT SCALE THIS PRINT			RFP	CAD FILE 102013-1		SIZE A	DRAWING NO. 102013-1	PAGE OF	REV. 7
			DIST WP						