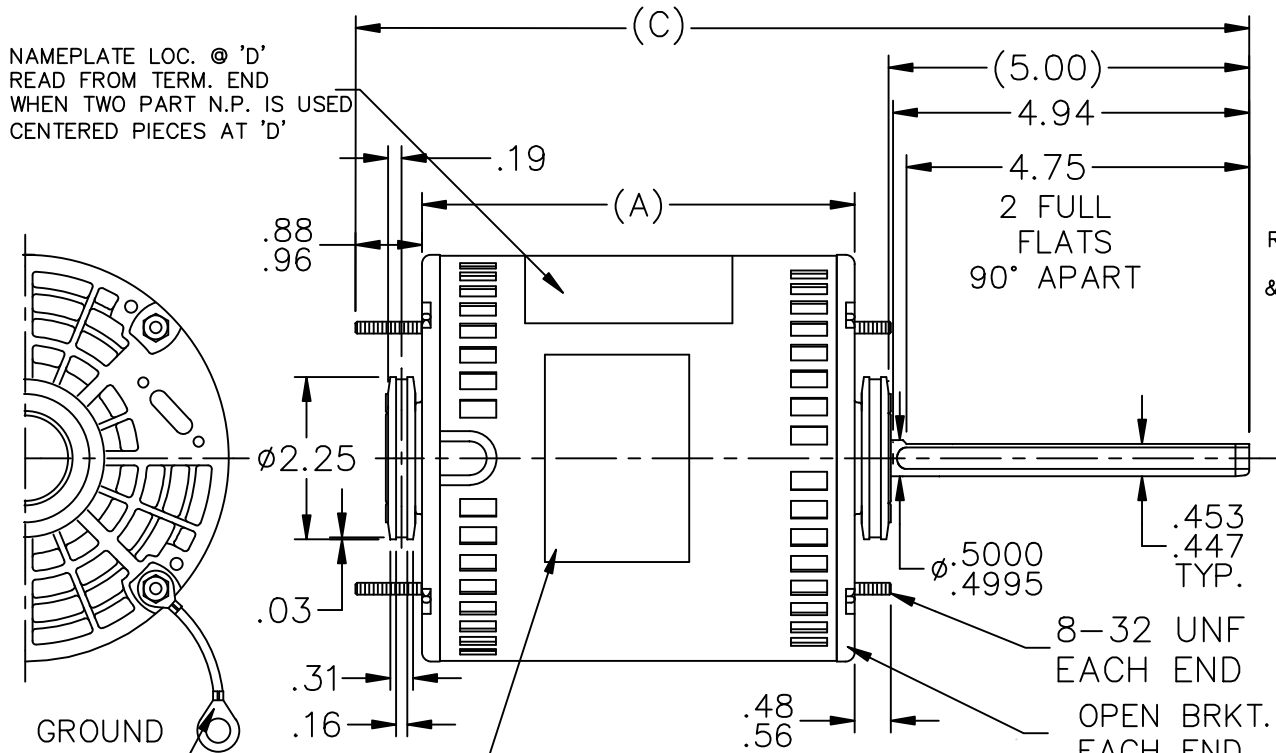
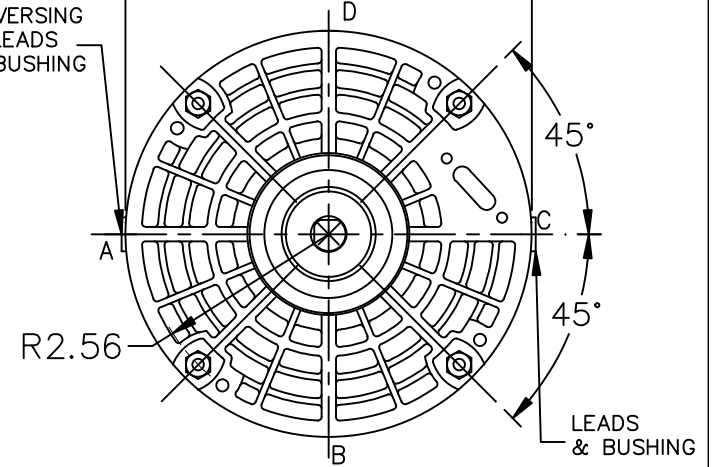


NAMEPLATE LOC. @ 'D'
READ FROM TERM. END
WHEN TWO PART N.P. IS USED
CENTERED PIECES AT 'D'



REVERSING
LEADS
& BUSHING

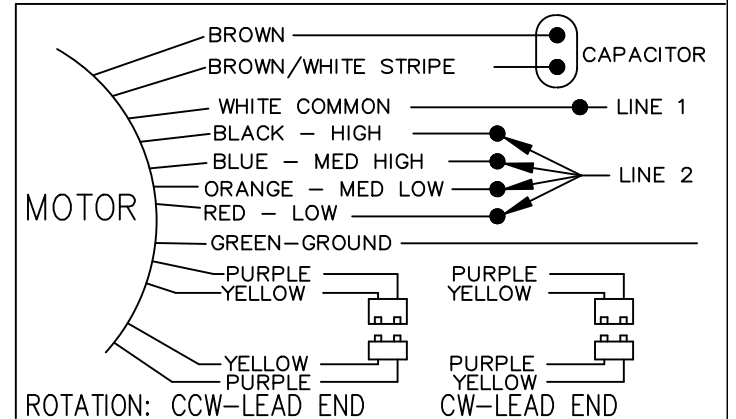


LEAD DESCRIPTION:
1 EACH, WHITE, BLACK, BLUE, RED, & ORANGE
WITH .25" FLAG STYLE QUICK CONNECT, EXIT
MOTOR AT 'C' 36.00" LONG

2 BROWN LEADS WITH .25 FLAG TYPE QUICK
CONNECT 36.00" LONG, EXIT MOTOR @ 'A'

REVERSING LEADS ARE MOLDED INTO MATING
PULL-APART PLUGS. 1 YELLOW & 1 PURPLE LEAD
PER PLUG 4.00" LONG, EXIT MOTOR @ 'A'

1 GREEN GROUND LEAD WITH TERMINAL FOR # 10
SCREW, 8.00" LONG.



DASH	FR.	C	A
550	48Y	12.22	6.00

NO.	REVISION	BY & DATE	CHK	ANG	TOLERANCES UNLESS SPECIFIED	
					DEC.	INCHES
				.X	±.1	
				.XX	±.03	
2	ODE STUD BOLT EXT WAS .73/.82	ISAAC10-1643	TJW	4/22/2010	CTO	.XXX ±.005
1	CHANGED LEAD LENGTHS TO 36." WAS 30." CN 37506	NJS 01-07-2004	MJS		.XXXX ±.0005	

<p>MARATHON ELECTRIC</p>	DRAWN NJS 10-30-2003	
	CHK ML 10-31-2003	
	APPD MJS 10-31-2003	
	SCALE 3=8	
	REF	
MAT'L.		FMF CN 37365
FINISH		PREV

THIS DRAWING IN DESIGN AND DETAIL IS OUR PROPERTY AND MUST NOT BE USED EXCEPT IN CONNECTION WITH OUR WORK ALL RIGHTS OF DESIGN AND INVENTION ARE RESERVED THIS IS AN ELECTRONICALLY GENERATED DOCUMENT - DO NOT SCALE THIS PRINT			RFP 11-03-2003	CAD FILE ss403368	SIZE A	DRAWING NO. SS403368	PAGE OF	REV. 2
			DIST WP					