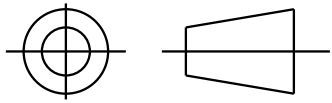


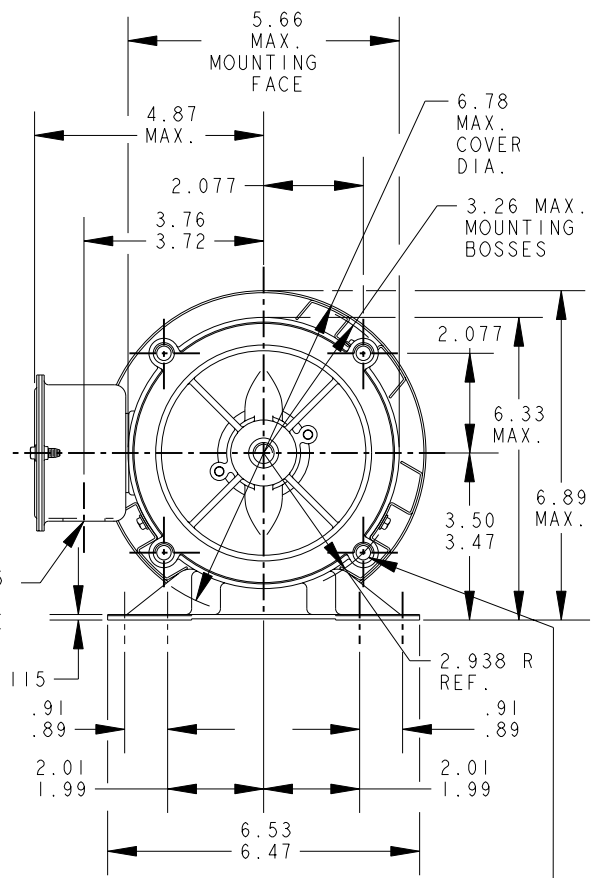
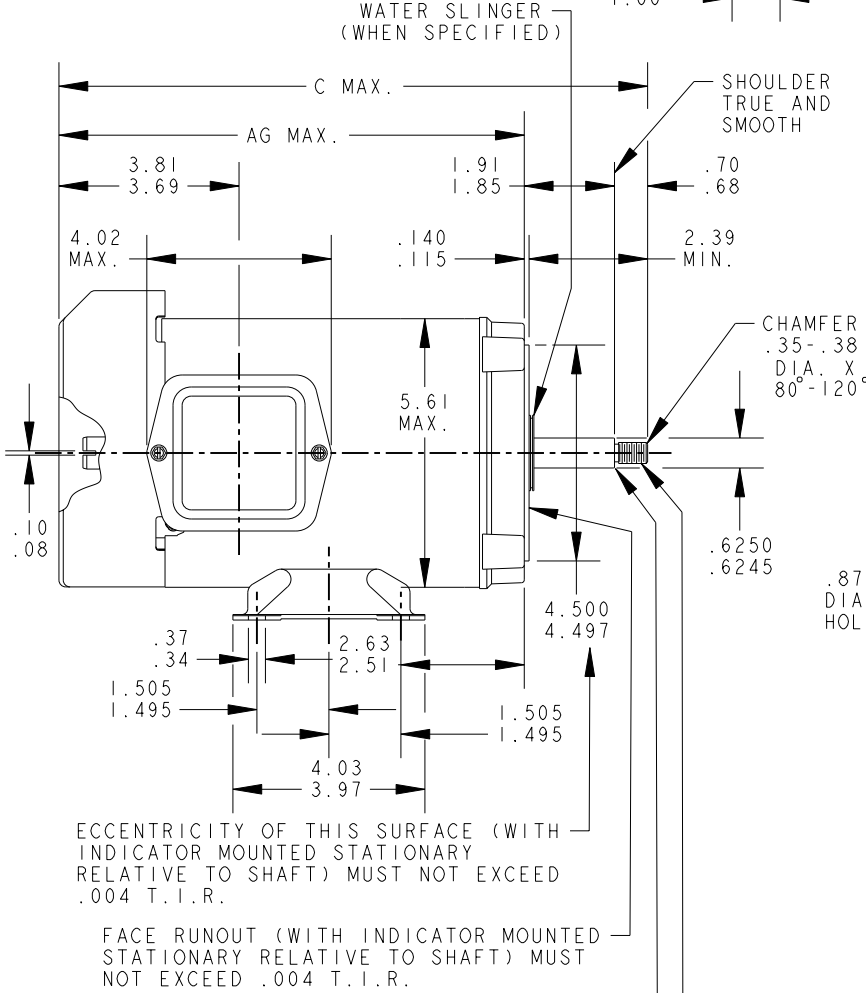
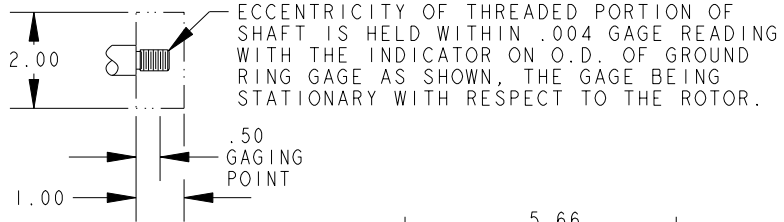
SHEET 1
REV 6
52A103056

THIRD ANGLE PROJECTION



REVISIONS

REV.	DESCRIPTION	DATE	APPROVED
6	CHG MADE AS PER IS05-2863	11/09/05	GOVARDAN




.375-16 UNC-2B (4 HOLES) .82 MIN FULL THD. THESE HOLES FIT A GAGE HAVING A RABBET 4.5005 DIA. AND 4 PINS .2917 DIA. LOCATED ON THE BASIC HOLE POSITIONS.

MATING PARTS SHOULD BE RELIEVED ONE THREAD TO CLEAR FILLET. .4375-20 UNF-2A (SEE VIEW ABOVE)

4	K	36	56J	11.87	9.28							
3	K	35	56J	11.44	8.85							
2	K	32	56J	10.81	8.22	6	K	37	56J	12.27	9.88	
1	K	33	56J	11.06	8.47	5	K	38	56J	12.87	10.28	
P	TYPE	GE SIZE	NEMA FR.	C	AG	P	TYPE	GE SIZE	NEMA FR.	C	AG	

SIGNATURES		DATE
MODEL	M.R.B	10/31/78
DETAIL	.	.
CHECKED	.	.
ENGRG	.	.
MFG	.	.
FOR ADDITIONAL INFO REFER TO:	QUALITY	.
APPLIED PRACTICES	ISSUED	AAU 04/21/96
DIMENSIONS ARE IN INCHES ✓	SOLID MODEL: 52A103056	



REGAL-BELOIT CORPORATION

TITLE

OUTLINE

GENERAL PURPOSE MOTOR - FORM N -TOTALLY ENCLOSED

OUTBOARD FAN - WELDED BASE - BALL OR SLEEVE BEARING -R2 MTG.

SIZE: DRAWING **A**

SCALE: 1.000 REF. No: . SHEET 1 of 1

52A103056 REV **6**