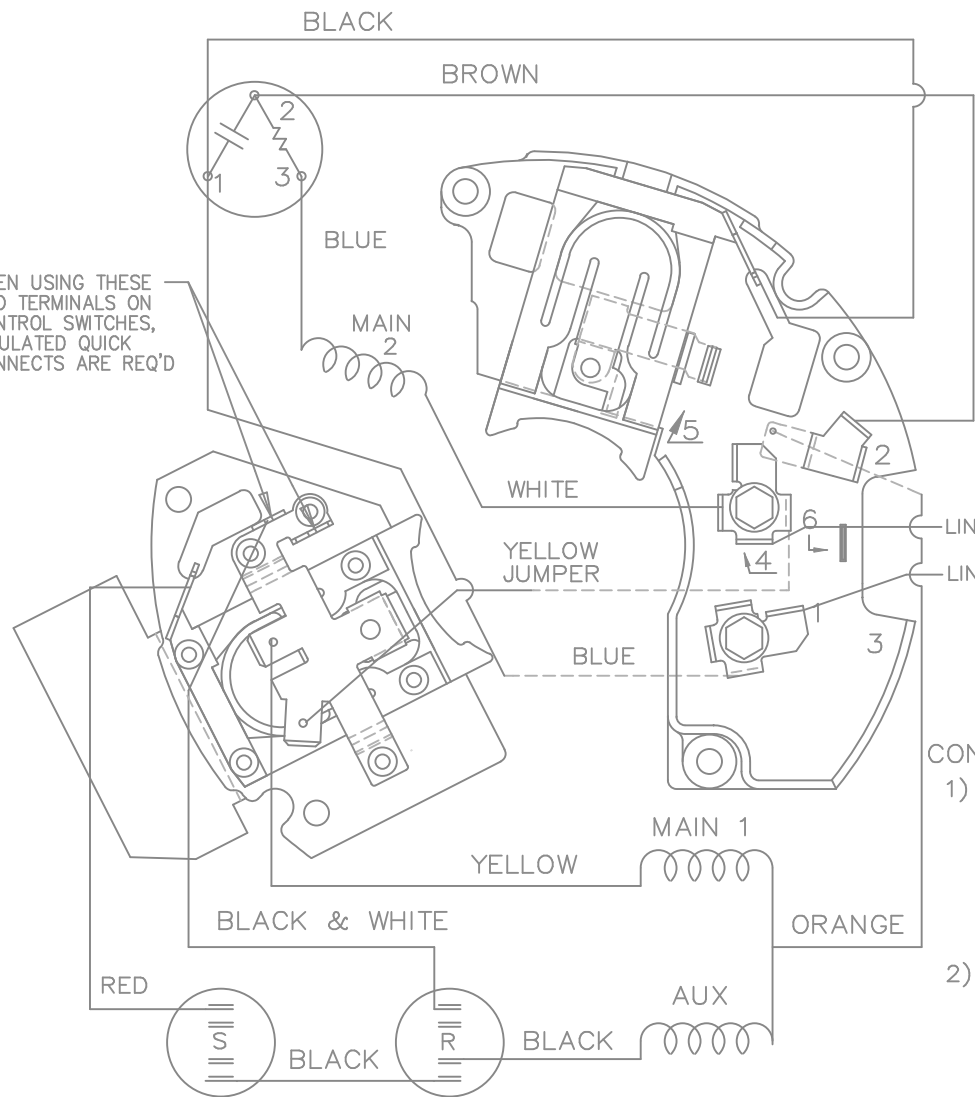
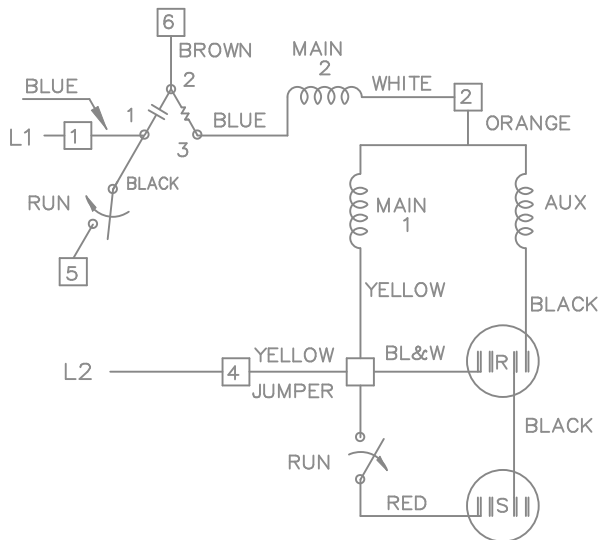


HIGH VOLTAGE





VIEWING TERM END

LINE 2 — RESERVE THESE TERMINALS  
AND SCREWS FOR  
LINE 1 — CUSTOMER LINE CONN'S.

CONNECTION INSTRUCTIONS:

- 1) TYPE OF CONNECTION
  - . DUAL VOLTAGE
  - . CAP START/CAP RUN
  - . NON REVERSIBLE CCW OPE
  - . OVERLOAD PROTECTOR
  - . RUN CONTACT AT TERM 5
- 2) LOW VOLTAGE SHOWN
  - . FOR HIGH VOLTAGE  
PLACE BROWN TERM 2  
TO TERM 6 AND WHITE  
TERM 4 TO TERM 2
- 3) DASH LINES INDICATE  
LEADS CONNECTED TO  
MOTOR SIDE OF SWITCH

5	BLACK & WHITE SWITCH LEAD WAS BLACK			TOLERANCES UNLESS SPECIFIED			DRAWN ML 02-12-1988				
	CN 29400-872	DRS 06-20-2002	TOM	DEC.	INCHES		CHK FG 01-12-1988				
4	REVISED STATIONARY SWITCH ASSEMBLY CN 25822	MJD 06-22-1998		.X	± -		APPD DRN 03-07-1988				
3	WHITE TERM 2 WAS TERM 1	DD 04-16-1993		.XX	± -		SCALE 1=1				
2	ADDED CUSTOMER CONN. NOTE CN 6011	BW 08-03-1989		.XXX	± -		REF				
1	NEW DRAWING	ML 02-12-1988		.XXX	± -		FMM				
NO.	REVISION	BY & DATE	CHK	ANG	± -	FINISH		PREV			
THIS DRAWING IN DESIGN AND DETAIL IS OUR PROPERTY AND MUST NOT BE USED EXCEPT IN CONNECTION WITH OUR WORK ALL RIGHTS OF DESIGN AND INVENTION ARE RESERVED THIS IS AN ELECTRONICALLY GENERATED DOCUMENT - DO NOT SCALE THIS PRINT			RFP		CAD FILE EE9006			SIZE A	DRAWING NO. EE9006	PAGE OF 5	REV. 5