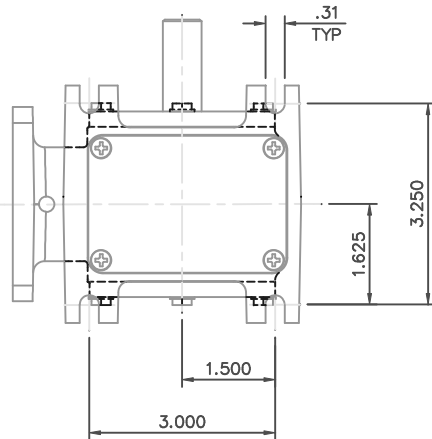
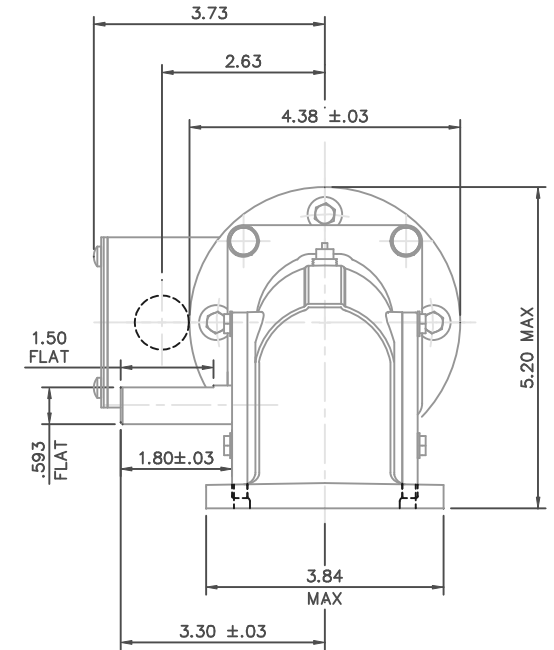
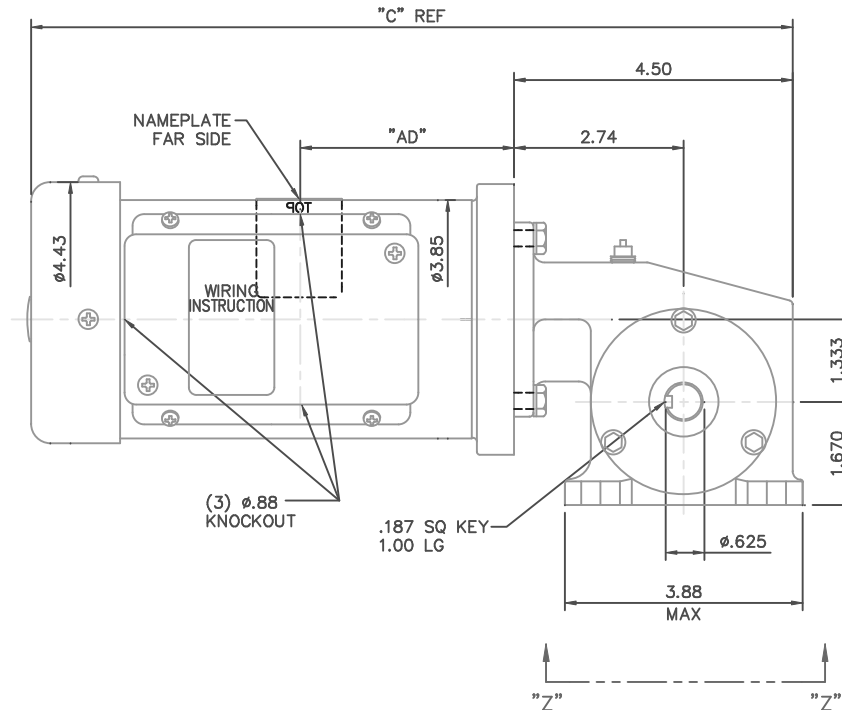


DECAL  
CONNECTION  
UNDER COVER  
(WHEN REQ'D.)



VIEW Z-Z



CATALOG NUMBER	OUTPUT RPM	FULL LOAD TORQUE LB.-IN.	INPUT HP	OVERHUNG LOAD LBS.	RATIO TO 1	"C"	"AD"
M1145127.00	29	220	3/8	235	60	12.31	3.50
M1145128.00	43	228	3/8	235	40	12.31	3.50
M1145129.00	86	138	3/8	235	20	12.31	3.50
M1145130.00	172	105	3/8	235	10	12.31	3.50
M1145131.00	345	54	3/8	235	05	12.31	3.50
M1145136.00	345	23	3/8	235	05	11.81	2.50

				TOLERANCES UNLESS SPECIFIED		LEESON	ELECTRIC MOTORS GEARMOTORS AND DRIVES	DRAWN LST 5/16/05	
				DEC.	INCHES			CHK	RW 6/1/05
				.X	±.1	TITLE	OUTLINE 38 FRAME A.C. RIGHT ANGLE GEARMOTOR	APPD	KH 6/1/05
				.XX	±.03			SCALE	1=2
02	CHANGED TO DIE CAST GEARBOX PER ECN 06-3024.	RBP 7/13/06	BC	.XXX	±.005	MAT'L		REF	PR040180
01	ADDED PERFORMANCE ATTRIBUTES TABLE	RLW 7/7/05		.XXX	±.0005			FMF	
REVISION				CHK	ANG	±1/2"	FINISH	PREV	
THIS DRAWING IN DESIGN AND DETAIL IS OUR PROPERTY AND MUST NOT BE USED EXCEPT IN CONNECTION WITH OUR WORK. ALL RIGHTS OF DESIGN AND INVENTION ARE RESERVED. THIS IS AN ELECTRONICALLY GENERATED DOCUMENT - DO NOT SCALE THIS PRINT				RFP			CAD FILE	M1030994	SIZE
				DIST					DRAWING NO.
									B
									M1030994
									02