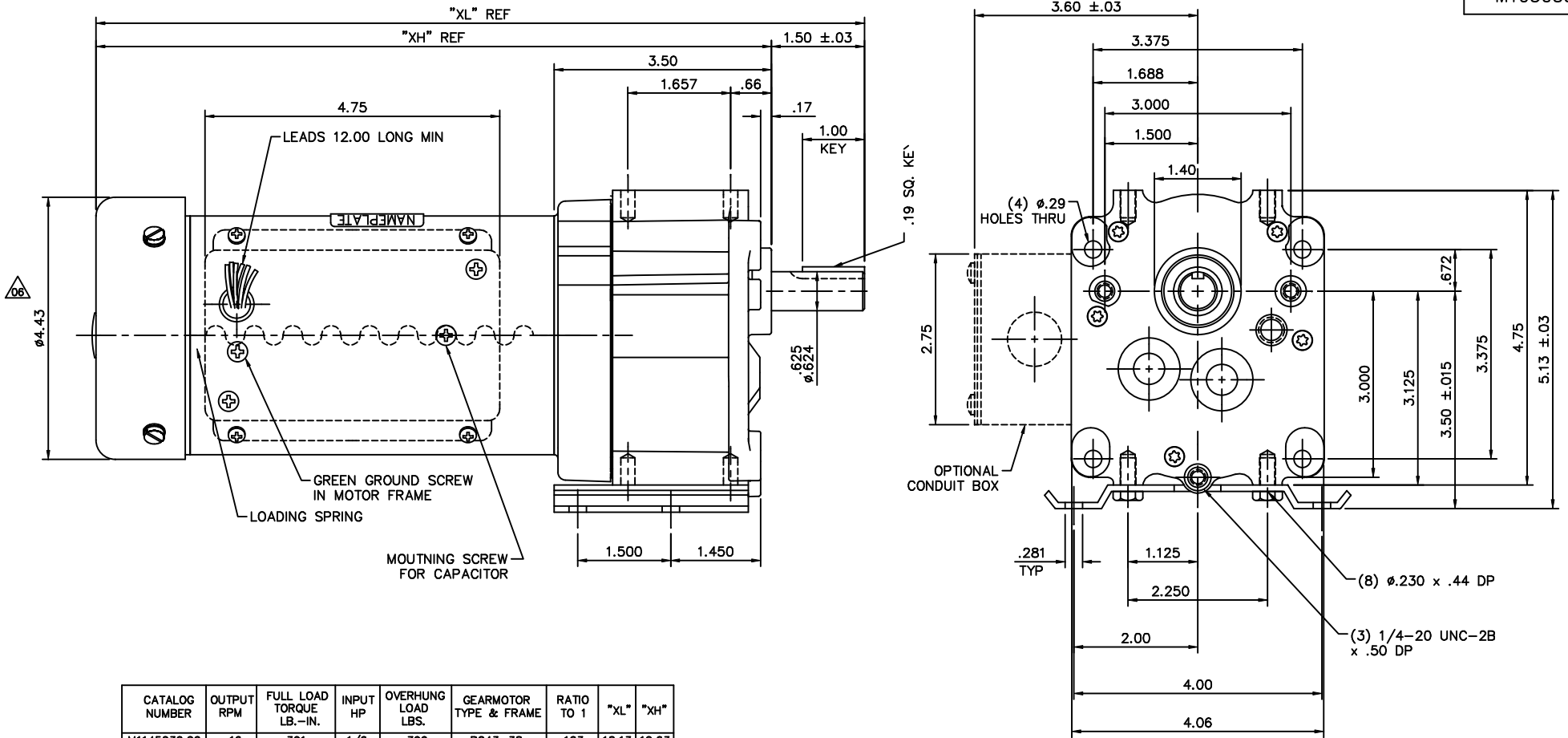


M1030381



CATALOG NUMBER	OUTPUT RPM	FULL LOAD TORQUE LB.-IN.	INPUT HP	OVERHUNG LOAD LBS.	GEARMOTOR TYPE & FRAME	RATIO TO 1	"XL"	"XH"
M1145030.00	16	391	1/6	399	P243-38	103	12.13	10.63
M1145031.00	30	295	1/6	330	P243-38	58	12.13	10.63
M1145032.00	40	219	1/6	303	P243-38	43	12.13	10.63
M1145033.00	60	157	1/6	268	P242-38	29	12.13	10.63
M1145034.00	90	103	1/6	237	P242-38	19	12.13	10.63
M1145035.00	156	60	1/6	201	P242-38	10.6	12.13	10.63

NO.	REVISION	BY & DATE	CHK	ANG	FINISH	TOLERANCES UNLESS SPECIFIED	DEC.	INCHES	TITLE	SCALE	REV.
07	EXTENDED 3 PT MOUNTING HOLES .14" TO MAKE FLUSH	RLW 6/25/02							LEESON ELECTRIC MOTORS AND DRIVES	DRAWN DWF 10/03/94	CHK
06	ADDED FANGUARD DIM	BPW 12/19/01						APPD SPV 10/03/94			
05	REV'D NAMEPLATE APPEARANCE FOR ASEMBLY	BJB 12/11/01							SCALE 5-8		
04	3.50 WAS 3.562, 5.13 WAS 5.19	SPV 04/28/97							REF		
03	ADDED FLAT TO FAN SHROUD	DWF 09/23/96							REF		
NO.	REVISION	BY & DATE	CHK	ANG	FINISH	TOLERANCES UNLESS SPECIFIED	DEC.	INCHES	TITLE	SCALE	REV.
									OUTLINE DRAWING	5-8	
									P240 GEARMOTOR - 38 FRAME A.C.		
									MAT'L		
									FINISH		
									CAD FILE	M1030381	
									SIZE	DRAWING NO.	
									B	M1030381	
									DIST		07