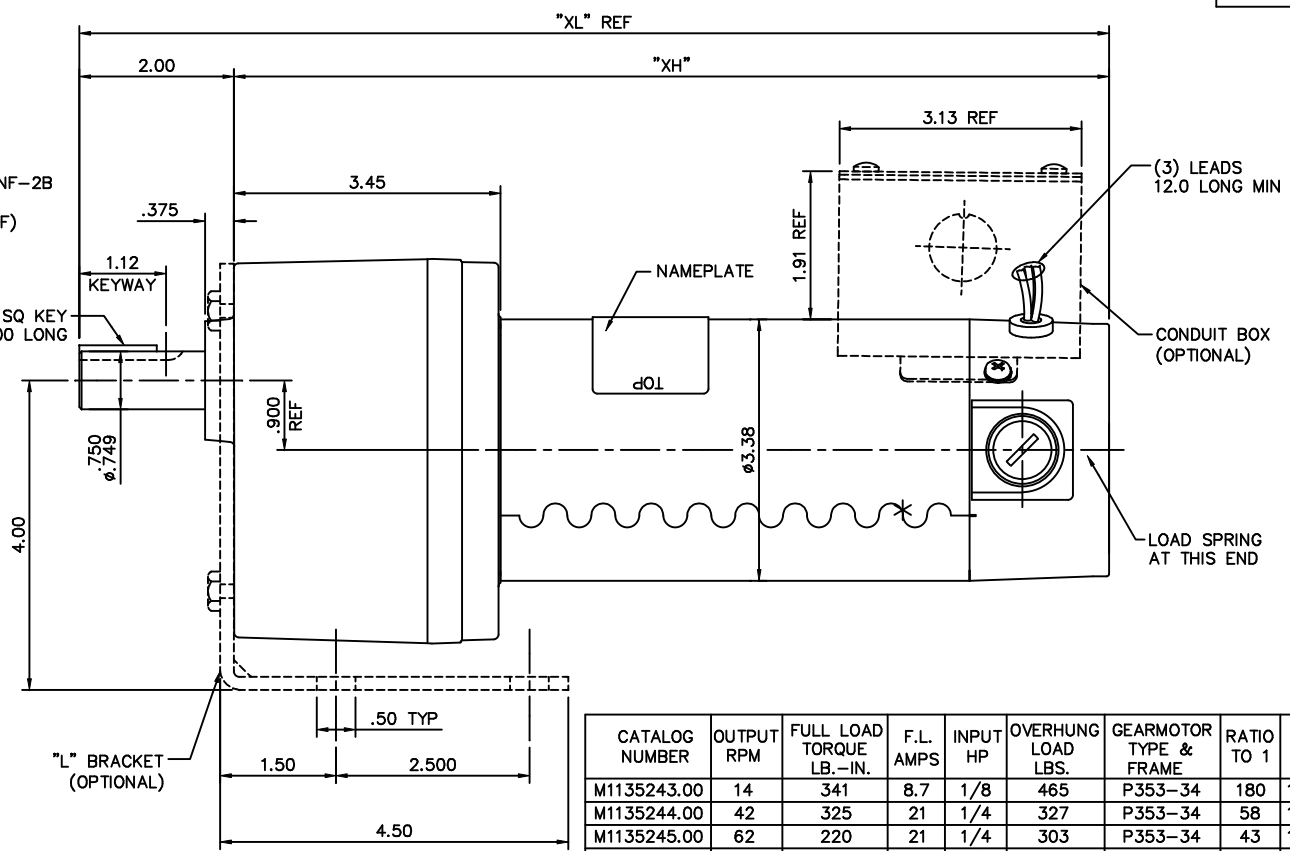


(4) 1/4-28 UNF-2B
.59 MIN. DEEP
(ø5.125 BC REF)

.19 SQ KEY
1.00 LONG



"L" BRACKET
(OPTIONAL)

CATALOG NUMBER	OUTPUT RPM	FULL LOAD TORQUE LB.-IN.	F.L. AMPS	INPUT HP	OVERHUNG LOAD LBS.	GEARMOTOR TYPE & FRAME	RATIO TO 1	"XL"	"XH"
M1135243.00	14	341	8.7	1/8	465	P353-34	180	11.05	9.05
M1135244.00	42	325	21	1/4	327	P353-34	58	13.31	11.31
M1135245.00	62	220	21	1/4	303	P353-34	43	13.31	11.31
M1135246.00	83	155	21	1/4	267	P353-34	29	13.31	11.31

		TOLERANCES UNLESS SPECIFIED			ELECTRIC MOTORS GEARMOTORS AND DRIVES	DRAWN	IPG 1/11/01			
		DEC.	INCHES			CHK				
04	1/4-28 UNF-2B TAPS WERE .63 DEEP PER ECR81849.	RPB 12/1/03	BC .X	±.1	TITLE	OUTLINE - 34 FRAME D.C. PE350 GEARBOX - 12 V	APPD SAD 1/11/01			
03	ADDED ITEM # M1135246.00	IPG 1/23/01	SAD .XX	±.03	SCALE	5=8				
02	ADDED ITEM # M1135245.00	IPG 1/22/01	SAD .XXX	±.005	REF	M1030589.00				
01	ADDED ITEM # M1135244.00	IPG 1/17/01	SAD .XXXX	±.0005	MAT'L	FMF M1135243.00				
NO.	REVISION	BY & DATE	CHK	ANG ±1/2"	FINISH	LEESON	PREV			
THIS DRAWING IN DESIGN AND DETAIL IS OUR PROPERTY AND MUST NOT BE USED EXCEPT IN CONNECTION WITH OUR WORK ALL RIGHTS OF DESIGN AND INVENTION ARE RESERVED THIS IS AN ELECTRONICALLY GENERATED DOCUMENT - DO NOT SCALE THIS PRINT					RFP	CAD FILE	M1030807	SIZE	DRAWING NO.	REV.
					DIST	B	M1030807.00	04		

ERROR: syntaxerror
OFFENDING COMMAND: --nostringval--

STACK:

-dictionary-
/Pscript_WinNT_Compat
-dictionary-