

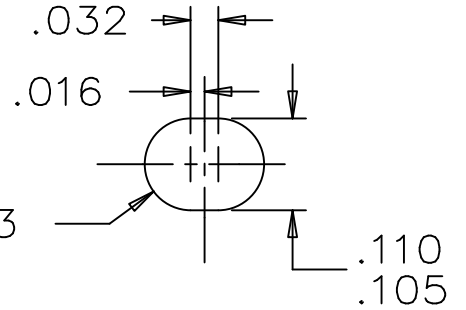
TO REVERSE DIRECTION OF ROTATION INTERCHANGE LEADS L1 AND L2. MOTOR MAY BE STARTED AND RUN ACROSS THE LINE ON THE DELTA CONNECTION.

A-92646

LINCOLN MOTORS

NOTES:

1. MATERIAL 304 STAINLESS STEEL
2. LETTERING AND ARTWORK BLACK
3. ALL DATA MUST BE HYDRAULIC OIL RESISTANT.



		TOLERANCES UNLESS SPECIFIED		REGAL-BELOIT <i>Motor Technologies Group</i>		DRAWN CTO 02-18-2004						
		DEC.	INCHES			CHK	ML 02-18-2004					
		.X	±.1			APPD	MS 02-18-2004					
		.XX	±.02	TITLE CONNECTION DIAGRAM PLATE		SCALE	1.5=1					
2	NAMEPLATE ONLY FOR 12 LEAD CN292003462	CTO	02-18-2004	.XXX	±.005	REF						
1	REISSUE WITH CORRECT DIAGRAM	CTO	02-16-2004	.XXXX	±.0005	MAT'L.	304 STAINLESS STEEL					
NO.	REVISION	BY & DATE	CHK	ANG	±7'30"	FINISH	PREV					
THIS DRAWING IN DESIGN AND DETAIL IS OUR PROPERTY AND MUST NOT BE USED EXCEPT IN CONNECTION WITH OUR WORK ALL RIGHTS OF DESIGN AND INVENTION ARE RESERVED THIS IS AN ELECTRONICALLY GENERATED DOCUMENT - DO NOT SCALE THIS PRINT				RFP	02-18-2004	CAD FILE	92646	SIZE	DRAWING NO.	PAGE	OF	REV.
				DIST	WA	A	92646					2