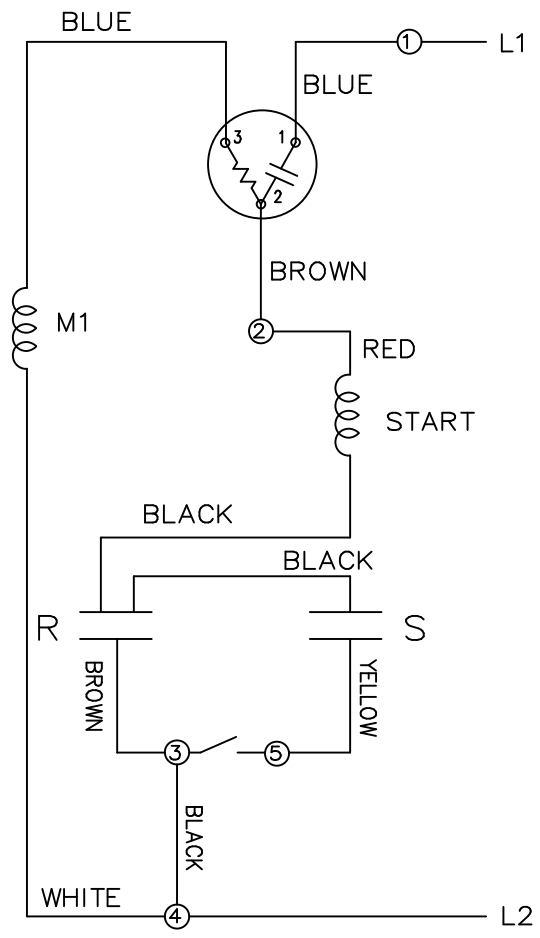
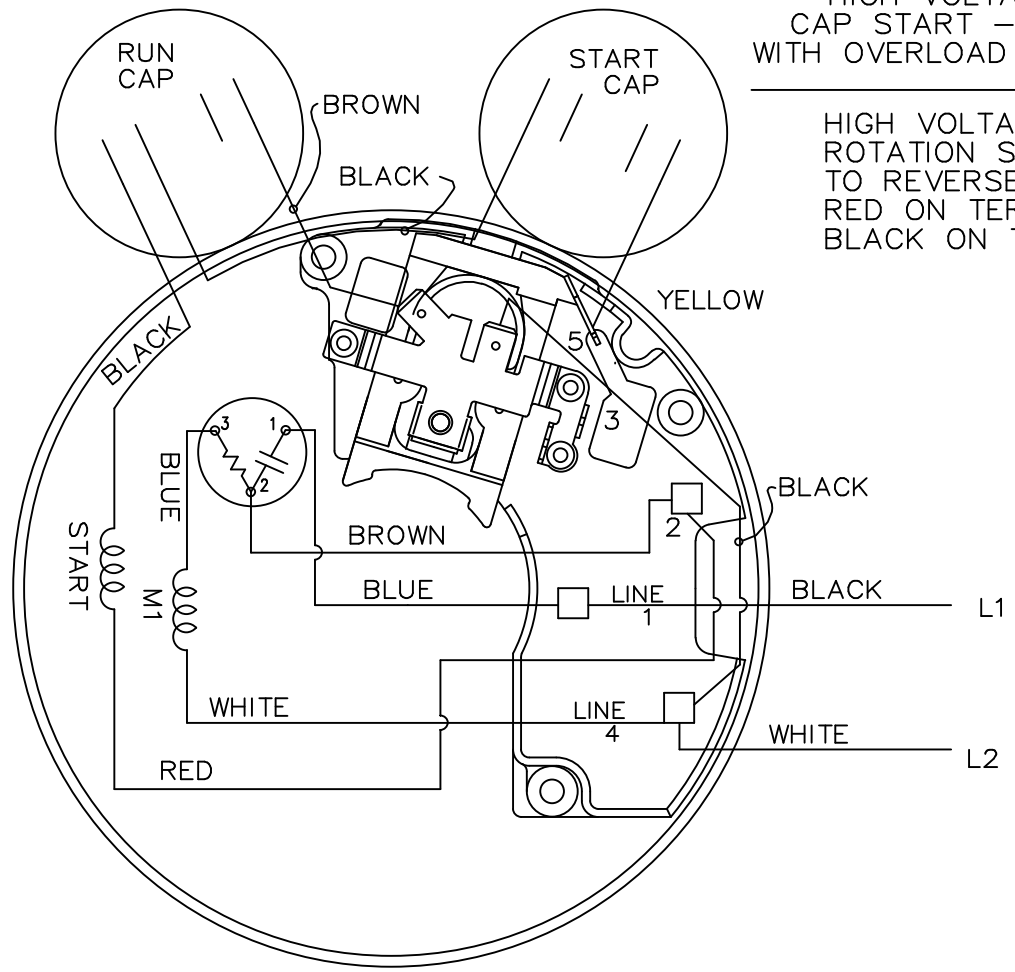



HIGH VOLTAGE - CCW



HIGH VOLTAGE  
CAP START - CAP RUN  
WITH OVERLOAD - SELECT ROT.

HIGH VOLTAGE CCW  
ROTATION SHOWN  
TO REVERSE INTERCHANGE  
RED ON TERM. 2 WITH  
BLACK ON TERM. 4



				TOLERANCES UNLESS SPECIFIED		 TITLE CONNECTION DIAGRAM		DRAWN DRS 04-18-2002		
				DEC.	INCHES			CHK ML 04-18-2002		
				.X	±.1			APPD GK 04-18-2002		
				.XX	±.02			SCALE 5=8		
				.XXX	±.005			REF		
1	NEW DRAWING	DRS 04-18-02	ML	.XXXX	±.0005	MAT'L.		FMF		
NO.	REVISION	BY & DATE	CHK	ANG	±7'30"	FINISH		PREV		
THIS DRAWING IN DESIGN AND DETAIL IS OUR PROPERTY AND MUST NOT BE USED EXCEPT IN CONNECTION WITH OUR WORK ALL RIGHTS OF DESIGN AND INVENTION ARE RESERVED THIS IS AN ELECTRONICALLY GENERATED DOCUMENT - DO NOT SCALE THIS PRINT				RFP		CAD FILE	102006-14-LN	SIZE	DRAWING NO. PAGE OF	REV.
				DIST	WP			A	102006-14-LN	1