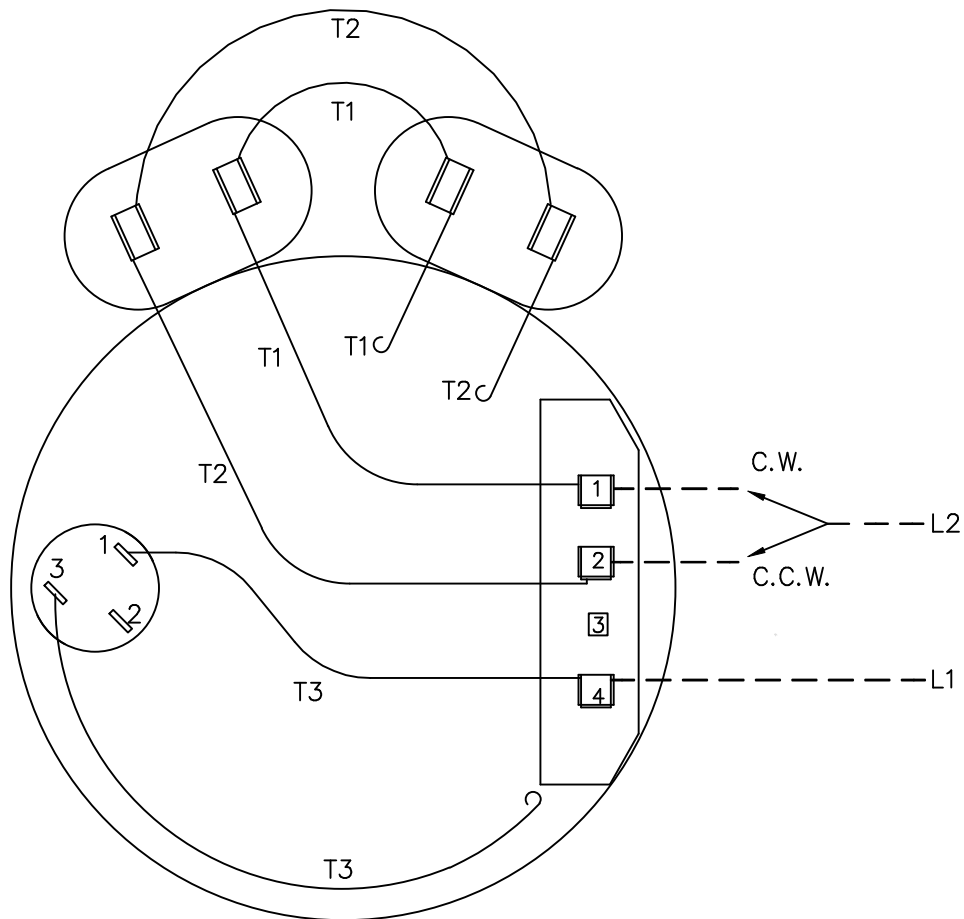
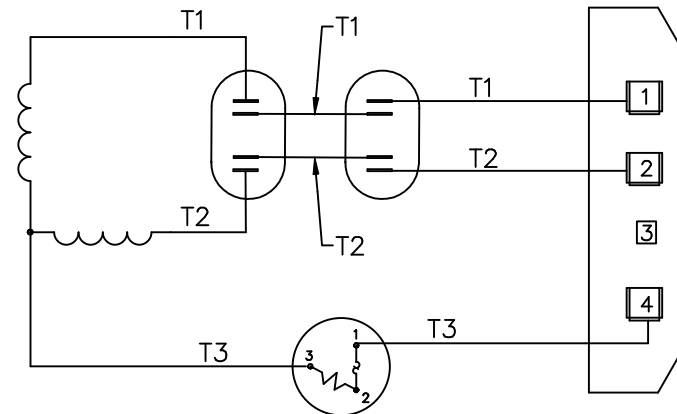


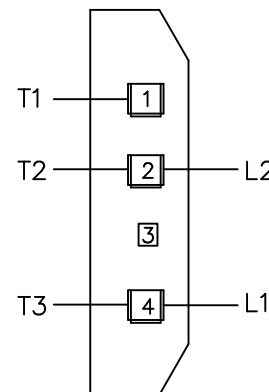
VIEW FROM OUTSIDE OF MOTOR AT SWITCH END.



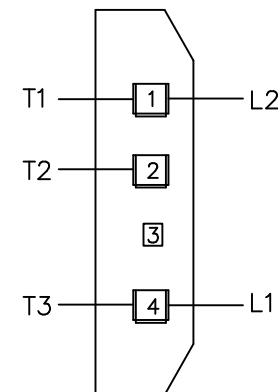
LINE LEADS



C.C.W. L.E.



C.W. L.E.



07	CAP. JUMPERS T1 & T2 WERE BLANK PER ENG'R	KMM	08/13/03	TOLERANCES UNLESS OTHERWISE SPECIFIED		LEESON ELECTRIC CORPORATION			
06	ADDED T3 TO TERMINAL BOARD VIEW	KMM	05/29/03	DECIMALS					
05	CWLE TERMINAL HAD TWO L1, TERM. 1 WAS L1,	MDN	11/14/02	.00	± .01	DRAWN PG 09/14/83	TITLE EXTERNAL WIRING DIAGRAM		
04	T3 JUMPER MOVED TO TOP OF BOARD	KMM	09/06/01	.000	± .005	CH'K'D. DLL 09/16/83	TYPE "P" W/PROTECTOR		
03	REDRAWN ON CAD	DBT	06/19/97	.0000	± .0005	APPR. JCW 09/19/83	MAT'L. DECAL - 080094		
NO.	REVISION	BY	DATE	FRACTIONS	± 1/64	SCALE 1=1	3 LEAD REVERSIBLE BRF		
THIS DRAWING IN DESIGN AND DETAIL IS OUR PROPERTY AND MUST NOT BE USED EXCEPT IN CONNECTION WITH OUR WORK ALL RIGHTS OF DESIGN AND INVENTION ARE RESERVED				ANGLES	± 1/2°	REF. PG. 6	FINISH FEDERAL	SIZE A	DRAWING NO.
				INCH/MM		FMF 4P17DJ7	APD	A	005024-10