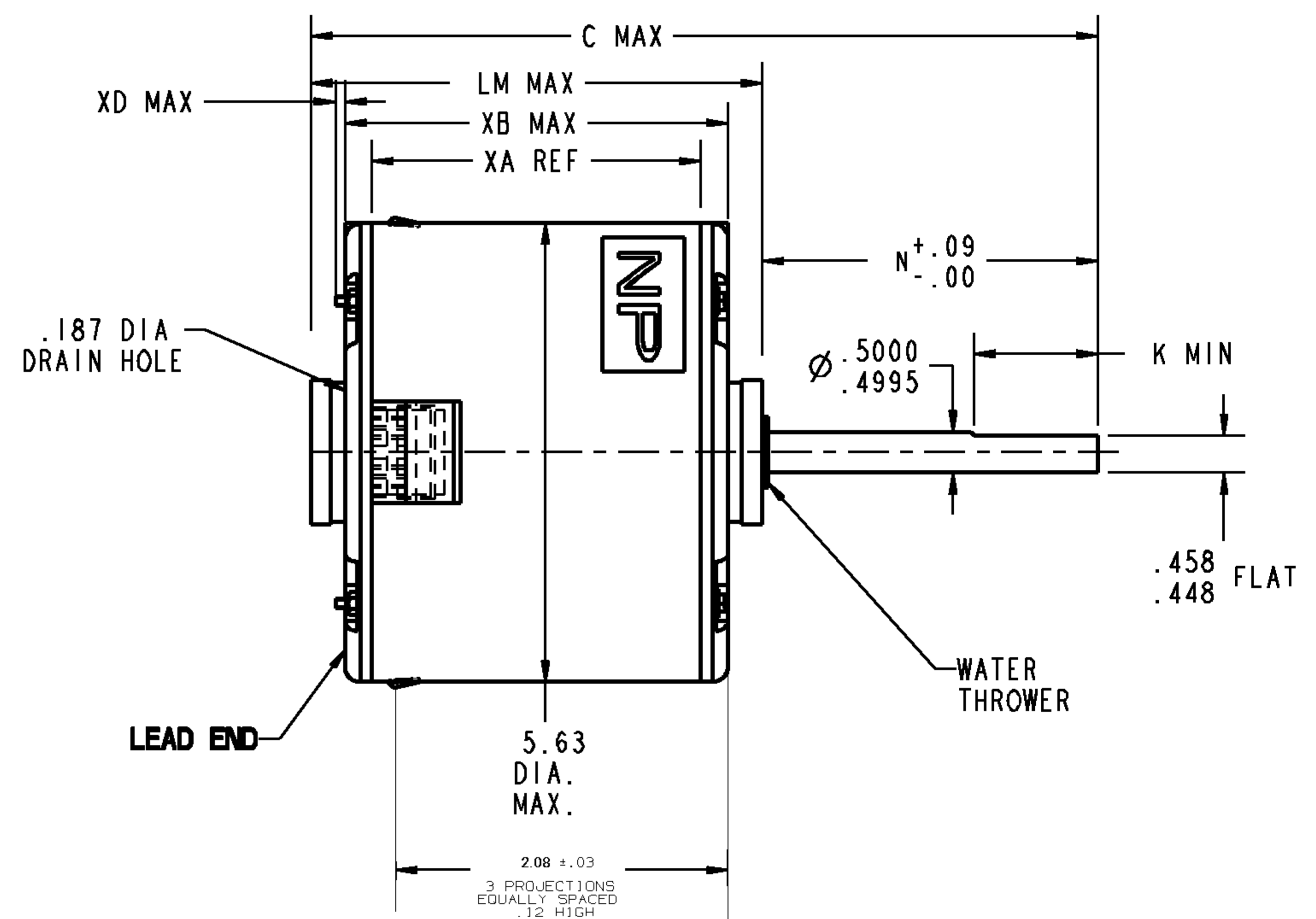
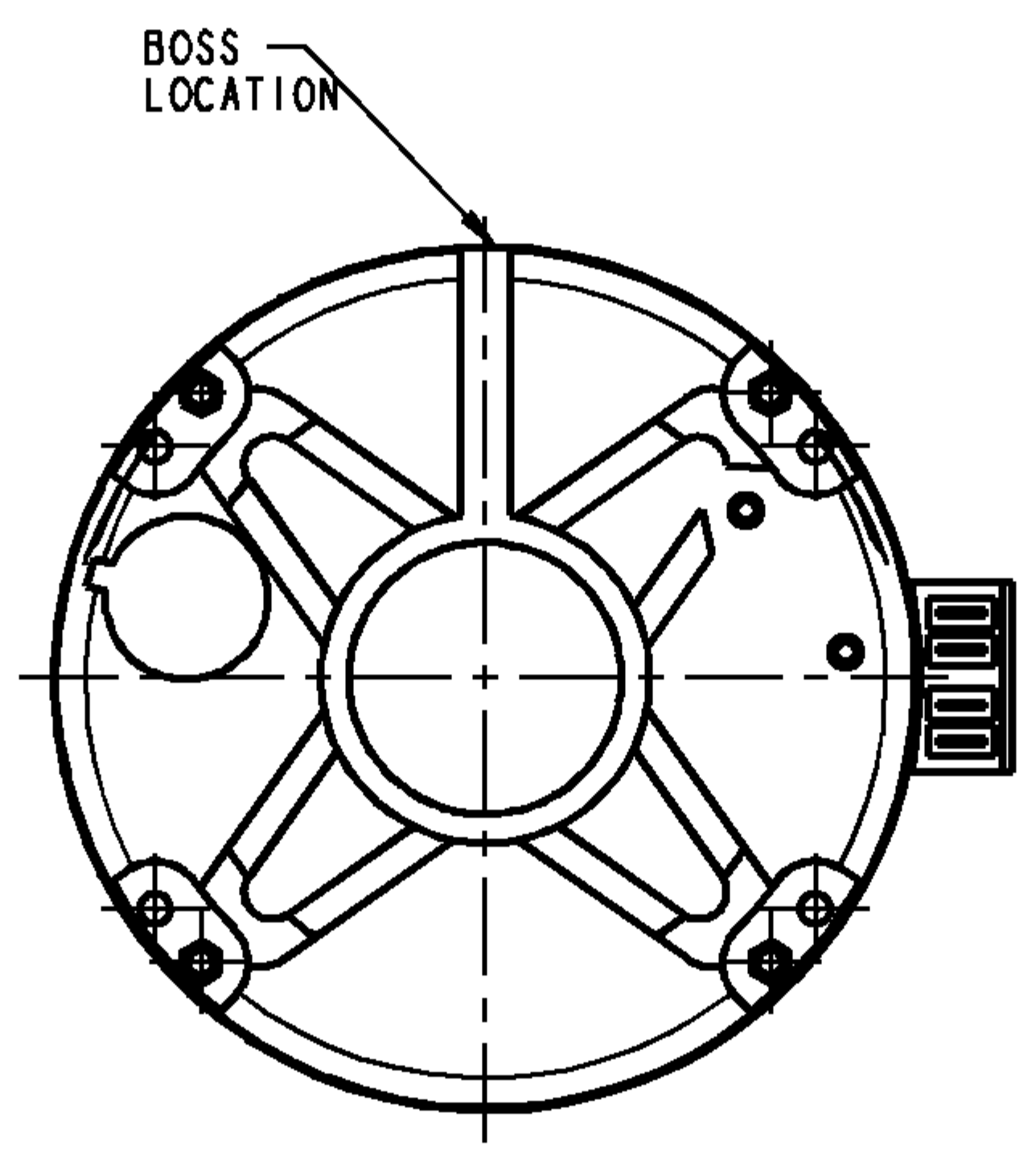


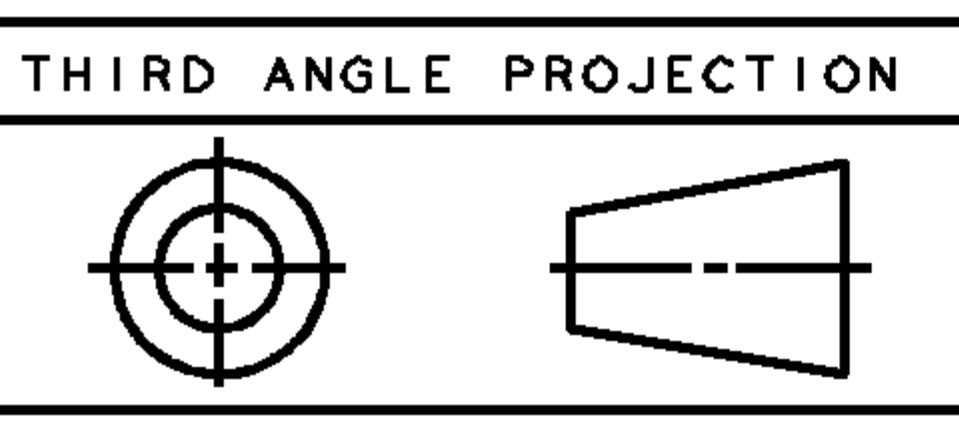
NAME: 501221413 OBJECT: 5KCP39FFY927S DATE: 29-Aug-08 18:14:37

VENTILATION SYSTEM		RBC PROPRIETARY AND CONFIDENTIAL INFORMATION This document is the property of REGAL BELOIT CORPORATION ("RBC") including its subsidiaries and divisions and contains proprietary information of RBC. This document is loaned on the express condition that neither it nor the information contained therein shall be disclosed to others without the express written consent of RBC, and that the information shall be used by the recipient only as approved expressly by RBC. This document shall be returned to RBC upon its request. This document may be subject to certain restrictions under U.S. export control laws and regulations.	REVISIONS			
SHELL VENTS	CLOSED		REV.	DESCRIPTION	DATE	APPROVED
ENDSHIELD (OPP. LEAD END)	CLOSED		1	SHAFT FLAT CHANGED FROM 2.00 TO 1.20 AS PER IS:08-5183	11/14/08 PRANEETH	AVL
ENDSHIELD (LEAD END)	CLOSED					



NOTE:
1. DIMENSIONS SHOWN ARE NOMINAL UNLESS OTHERWISE SPECIFIED.

						N/A	.14
						XC	XD
8.14	2.50	1.20	N/A	N/A	5.56	4.07	4.73
C	N	K	XN	XK	LM	XA	XB



SRD	CONNECTION	COLOR	EXT TYPE	EXT LOC (WEIGHT LB)	QAGE	MATERIAL	WALL THK	LENGTH	TERMINATION
1	COMMON LEAD	YELLOW	TERM BLOCK	3:00 ± .00		EPDM	2/64	N/R	N/R
2	CAPACITOR LEAD	BROWN	TERM BLOCK	3:00 ± .00		EPDM	2/64	N/R	N/R
3	HIGH SPEED LEAD	BLACK	TERM BLOCK	3:00 ± .00		EPDM	2/64	N/R	N/R

NAMEPLATE DATA	
MODEL	5KCP39FFY927S
CUST P/N	3S013
HP	1/5
RPM	1080
VOLTS	200-230
HZ	60/50
SPEEDS	1
AMPS	1.60
CAP REQ'D-1	5.00µfd/370Volts
CAP REQ'D-2	N/R
CONN DRW	NP24X327581
ROTATION	CCW (VIEWED FROM LE)

REGAL-BELOIT CORPORATION
FORTWAYNE, INDIANA

TITLE: **MOTOR OUTLINE**
(CUSTOMER NAME: DEF PUR)

SIZE: B DRAWING: **5KCP39FFY927S** REV: 1

SCALE: NO ISSUED: 11/14/08 SHEET 1 of 1